

# THE REGISTRAR GENERAL'S QUARTERLY REPORT FOR NORTHERN IRELAND

## KEY POINTS

### BIRTHS AND STILLBIRTHS

#### *Quarter 2 2005*

- The number of births registered in the quarter under review was 5,700 (2,870 males and 2,830 females). The annualised rate was 13.3 births per 1,000 of the estimated population, which was 0.6 above that for the corresponding quarter of 2004.
- Live births outside marriage numbered 2,049, which represented 35.9 per cent of the total live births registered.
- The number of stillbirths registered was 19 and the rate was 3.3 stillbirths per 1,000 births.

### DEATHS

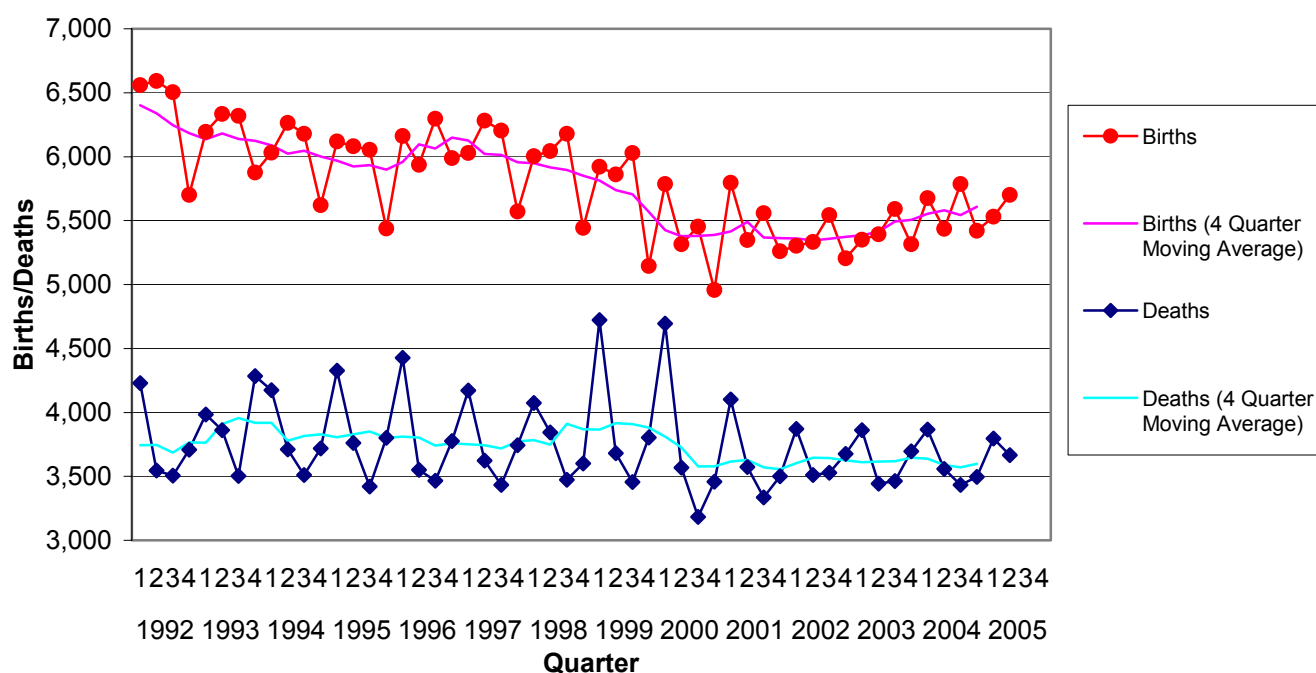
#### *Quarter 2 2005*

- Deaths registered during the quarter numbered 3,665 (1,789 males and 1,876 females). The annualised rate was 8.6 deaths per 1,000 of the estimated population, which was 0.3 above that for the corresponding quarter of 2004.
- Deaths of children aged under one year numbered 41, representing an infant mortality rate of 7.0 per 1,000 live births registered.
- The number of deaths from cancer totalled 971, comprising of 480 males and 481 females. Cancer deaths accounted for 26.5 percent of the total deaths in this quarter.
- The number of deaths from ischaemic heart disease totalled 694 comprising of 367 males and 327 females deaths. These accounted for 18.9 percent of the total deaths in the quarter.

#### *Methicillin resistant Staphylococcus Aureus (MRSA) related deaths (2004)*

- As noted in the last quarterly report, 44 deaths were registered in 2004, where MRSA was recorded on the death certificate. As indicated at that time, further data on MRSA related mortality is now available on the NISRA website ([www.nisra.gov.uk](http://www.nisra.gov.uk)).

**Figure 1. QUARTERLY BIRTHS AND DEATHS, 1992 to 2005Q2**



**Table 1. VITAL STATISTICS BY QUARTER FROM 1 JANUARY 2001**

YEAR	QUARTER	BIRTHS	% OUTSIDE MARRIAGE	STILLBIRTHS	DEATHS		
					ALL CAUSES	CANCER	ISCHAEMIC HEART DISEASE
2001	1st	5,796	33.2	32	4,102	941	887
	2nd	5,348	31.1	26	3,573	910	771
	3rd	5,557	31.7	27	3,336	905	755
	4th	5,261	34.1	27	3,501	940	735
2002	1st	5,304	33.7	23	3,871	877	790
	2nd	5,334	33.1	30	3,511	887	707
	3rd	5,542	33.5	32	3,527	944	717
	4th	5,205	33.6	37	3,677	944	734
2003	1st	5,350	34.4	29	3,860	906	786
	2nd	5,392	33.1	27	3,442	889	723
	3rd	5,590	34.1	25	3,464	989	644
	4th	5,316	35.9	27	3,696	973	690
2004	1st	5,677	35.2	27	3,867	935	761
	2nd	5,435	33.7	33	3,558	921	660
	3rd	5,786	33.9	26	3,434	939	663
	4th	5,420	35.3	27	3,495	962	697
2005	1st	5,530	36.3	31	3,796	946	716
	2nd	5,700	35.9	19	3,665	971	694

**Table 2. VITAL STATISTICS BY MONTH FROM JANUARY 2002**

YEAR	REGISTRATION MONTH	BIRTHS	STILLBIRTHS	DEATHS
<b>2002</b>	January	2,103	12	1,419
	February	1,524	6	1,250
	March	1,677	5	1,202
	April	1,817	10	1,237
	May	1,898	11	1,234
	June	1,619	9	1,040
	July	1,850	11	1,243
	August	1,821	9	1,111
	September	1,871	12	1,173
	October	1,943	8	1,263
	November	1,733	11	1,203
	December	1,529	18	1,211
<b>2003</b>	January	2,109	9	1,432
	February	1,546	9	1,236
	March	1,695	11	1,192
	April	1,799	9	1,149
	May	1,795	7	1,133
	June	1,798	11	1,160
	July	1,982	10	1,190
	August	1,729	8	1,063
	September	1,879	7	1,211
	October	2,032	10	1,266
	November	1,705	9	1,222
	December	1,579	8	1,208
<b>2004</b>	January	2,145	13	1,405
	February	1,614	6	1,200
	March	1,918	8	1,262
	April	1,828	10	1,236
	May	1,719	13	1,117
	June	1,889	10	1,205
	July	1,846	7	1,153
	August	1,885	7	1,140
	September	2,055	12	1,141
	October	1,884	6	1,160
	November	1,978	12	1,243
	December	1,558	9	1,092
<b>2005</b>	January	2,162	9	1,306
	February	1,654	12	1,216
	March	1,714	10	1,274
	April	1,973	6	1,199
	May	1,829	8	1,236
	June	1,898	5	1,230

**Table 3. VITAL STATISTICS BY AREA (QUARTER ENDED 30 JUNE 2005)**

AREA <sup>1</sup>	ESTIMATED POPULATION 30 JUNE 2004	EVENTS REGISTERED									
		BIRTHS				STILL BIRTHS	DEATHS BY		CAUSE OF DEATH		
		LIVE BIRTHS	BIRTH RATE	OUTSIDE MARRIAGE Number	%		ALL AGES	DEATH RATE	UNDER 1 YEAR	CANCER	ISCHAEMIC HEART DISEASE
<b>Northern Ireland</b>	<b>1,710,300</b>	<b>5,700</b>	<b>13.3</b>	<b>2,049</b>	<b>36</b>	<b>19</b>	<b>3,665</b>	<b>8.6</b>	<b>41</b>	<b>971</b>	<b>694</b>
<b>Eastern Board</b>	<b>664,100</b>	<b>2,074</b>	<b>12.5</b>	<b>879</b>	<b>42</b>	<b>9</b>	<b>1,576</b>	<b>9.5</b>	<b>23</b>	<b>378</b>	<b>290</b>
Ards	74,600	227	12.2	74	33	1	159	8.5	2	36	26
Belfast	269,000	849	12.6	473	56	1	753	11.2	16	162	148
Castlereagh	65,800	187	11.4	62	33	-	154	9.4	1	44	33
Down	66,800	214	12.8	69	32	3	146	8.7	-	44	20
Lisburn	110,200	391	14.2	132	34	1	195	7.1	2	42	34
North Down	77,600	206	10.6	69	33	3	169	8.7	2	50	29
<b>Northern Board</b>	<b>435,900</b>	<b>1,452</b>	<b>13.3</b>	<b>472</b>	<b>33</b>	<b>6</b>	<b>945</b>	<b>8.7</b>	<b>3</b>	<b>270</b>	<b>188</b>
Antrim	49,800	178	14.3	53	30	-	91	7.3	-	26	15
Ballymena	60,000	217	14.5	71	33	1	140	9.3	-	39	31
Ballymoney	28,300	90	12.7	33	37	-	47	6.7	1	14	12
Carrickfergus	38,700	115	11.9	44	38	-	80	8.3	-	17	17
Coleraine	56,500	152	10.8	50	33	1	119	8.4	-	41	29
Cookstown	33,700	139	16.5	40	29	2	71	8.4	-	19	19
Larne	30,900	86	11.1	27	31	-	88	11.4	-	28	16
Magherafelt	41,300	143	13.9	29	20	1	78	7.6	-	23	21
Moyle	16,400	45	11.0	16	36	-	40	9.7	-	7	2
Newtownabbey	80,300	287	14.3	109	38	1	191	9.5	2	56	26
<b>Southern Board</b>	<b>321,400</b>	<b>1,184</b>	<b>14.7</b>	<b>343</b>	<b>29</b>	<b>3</b>	<b>584</b>	<b>7.3</b>	<b>2</b>	<b>162</b>	<b>117</b>
Armagh	54,900	213	15.5	56	26	-	86	6.3	1	22	21
Banbridge	43,800	168	15.4	46	27	-	58	5.3	-	17	15
Craigavon	83,200	280	13.5	104	37	2	156	7.5	-	35	30
Dungannon	49,300	187	15.2	53	28	1	100	8.1	-	30	22
Newry & Mourne	90,300	336	14.9	84	25	-	184	8.2	1	58	29
<b>Western Board</b>	<b>288,900</b>	<b>990</b>	<b>13.7</b>	<b>355</b>	<b>36</b>	<b>1</b>	<b>560</b>	<b>7.8</b>	<b>13</b>	<b>161</b>	<b>99</b>
Fermanagh	59,300	182	12.3	51	28	-	133	9.0	1	42	17
Limavady	34,000	108	12.7	43	40	-	64	7.5	3	14	11
Derry	106,900	408	15.3	182	45	1	213	8.0	6	61	43
Omagh	50,100	176	14.1	39	22	-	87	6.9	2	23	16
Strabane	38,700	116	12.0	40	34	-	63	6.5	1	21	12

<sup>1</sup> Figures may not add due to rounding.

**Table 4. DEATHS REGISTERED DURING QUARTER ENDED 30 JUNE 2005 CLASSIFIED BY CAUSE, GENDER, HEALTH BOARD AND AGE GROUP**

ICD10 Code	Cause of death	Gender		Health Board				Age Group								
		Males	Females	Eastern	Northern	Southern	Western	0	1-14	15-34	35-44	45-54	55-64	65-74	75-84	85 +
<b>A00-Y98</b>	<b>All Causes of Death</b>	1789	1876	1576	945	584	560	41	12	95	95	176	326	711	1186	1023
A00-B99	Certain Infectious and Parasitic Diseases	20	17	18	7	3	9	-	2	1	1	1	8	4	11	9
C00-D48	Neoplasms	500	488	382	276	164	166	-	1	6	26	66	148	269	312	160
C00-C97	Malignant Neoplasms	490	481	378	270	162	161	-	1	5	25	65	146	264	308	157
D50-D89	All Diseases of the Blood and Blood Forming Organs and Certain Disorders Involving the Immune Mechanism	5	8	1	8	2	2	-	-	1	1	2	2	3	3	1
E00-E90	Endocrine, Nutritional and Metabolic Diseases	40	42	33	18	14	17	-	-	-	1	2	7	21	30	21
F00-F99	Mental and Behavioural Disorders	43	65	47	24	24	13	-	-	3	6	5	1	12	33	48
G00-H95	Diseases of the Nervous System and the Sense Organs	61	60	56	37	17	11	-	3	4	4	5	7	21	43	34
I00-I99	Disease of the Circulatory System	613	647	525	334	219	182	-	-	5	23	44	82	224	452	430
I20-I25	Ischaemic Heart Disease	367	327	290	188	117	99	-	-	1	10	35	52	141	246	209
I60-I69	Cerebrovascular Disease	132	186	134	93	49	42	-	-	-	7	5	11	36	125	134
J00-J99	Diseases of the Respiratory System	212	294	233	116	73	84	1	1	3	3	8	28	84	168	210
K00-K93	Diseases of the Digestive System	73	83	85	31	20	20	-	-	4	6	14	19	28	48	37
L00-M99	All Diseases of Skin, Musculoskeletal System and Connective Tissue	8	21	15	4	5	5	-	-	1	-	1	4	3	15	5
N00-N99	Diseases of the Genitourinary System	41	58	42	31	17	9	-	-	-	-	4	1	16	40	38
O00-O99	Pregnancy, Childbirth and the Puerperium	-	1	-	-	-	1	-	-	-	1	-	-	-	-	-
P00-P96	Certain Conditions Originating in the Perinatal Period	16	12	16	3	1	8	28	-	-	-	-	-	-	-	-
Q00-Q99	Congenital Malformations, Deformations and Chromosomal Abnormalities	11	10	10	2	3	6	9	2	4	1	-	2	1	2	-
R00-R99	Signs, Symptoms and Abnormal Clinical and Laboratory Findings, N.E.C.	9	11	15	2	1	2	3	-	2	-	-	-	1	1	13
V01-Y98	All External Causes of Morbidity and Mortality	137	59	98	52	21	25	-	3	61	22	24	17	24	28	17
V01-V99	Transport Accidents	33	12	18	17	4	6	-	1	26	2	3	2	7	4	-
X60-X84, Y87.0; Y10-Y34, Y87.2	Suicide, Self-Inflicted Injury and Events of Undetermined Intent	41	10	21	10	8	12	-	-	20	12	10	4	3	2	-

## **GENERAL NOTES**

The figures on births and deaths in this report are provisional. Final figures are published in the relevant Registrar General's Annual Report.

### **Births, stillbirths and deaths**

Figures relate to those registered during the quarter under review. A birth or stillbirth is assigned to the usual place of residence of mother and excludes births and stillbirths to non-Northern Ireland residents. Deaths are assigned to the usual residence of the deceased, if such residence is within Northern Ireland; otherwise to the place of occurrence and non-resident deaths are included in the figures.

### **Birth, stillbirth and death rates**

Rates for 2004 and 2005 data are calculated on the estimated home population as at 30<sup>th</sup> June 2004. All quarter rates have been annualised by multiplying the rates by 4.

### **Stillbirth**

Refers to a child which has been issued from its mother after the 24th week of pregnancy and which did not breathe or show any other sign of life.

### **Infant mortality**

Refers to all deaths in the first year of life.

### **Cancer**

Refers to all malignant neoplasms of the lymphatic and haematopoietic tissues, including Hodgkin's disease, leukaemia and aleukaemia.

### **Cause of death coding**

Each death registered in Northern Ireland is attributed to a single cause and coded in accordance with the International Statistical Classification of Diseases, Injuries and Causes of Death (ICD). The General Register Office in Northern Ireland changed from the ninth (ICD9) to the tenth (ICD10) edition from January 2001. The ICD10 codes used for the causes of death in Tables 1 and 3 are as follows:

Cancer	C00-C97
Ischaemic Heart Disease	I20-I25

### **Suicide, Self-Inflicted Injury and Events of undetermined intent**

In the UK, in considering suicide events it is conventional to include cases where the cause of death is classified as either 'Suicide and self-inflicted injury' or 'Undetermined injury'. The ICD codes used for 'Suicide and self-inflicted injury' are X60-X84 and Y87.0, and the ICD codes used for 'Undetermined injury' are Y10-Y34 and Y87.2.

### **Seasonality**

This short report presents selected information that illustrates seasonal variations in birth and deaths in Northern Ireland.

Further information on the statistics provided in this publication can be obtained from Customer Services at:

Customer Services  
NISRA  
McAuley House  
2-14 Castle Street  
BELFAST  
BT1 1SA

Phone: 028 90348160  
Faxsimile: 028 90348161  
E-mail: [census.nisra@dfpni.gov.uk](mailto:census.nisra@dfpni.gov.uk)