

## THE REGISTRAR GENERAL'S QUARTERLY REPORT FOR NORTHERN IRELAND

### KEY POINTS

#### Births and Stillbirths

##### *Quarter 1 2005*

- The number of births registered in the quarter under review was 5,530 (2,816 males and 2,714 females). The annualised rate was 13.0 births per 1,000 of the estimated population, which was 0.4 below that for the corresponding quarter of 2004.
- Live births outside marriage numbered 2,010, which represented 36.3 per cent of the total live births registered.
- The number of stillbirths registered was 31 and the rate was 5.6 stillbirths per 1,000 births (including stillbirths).

#### Deaths

##### *Quarter 1 2005*

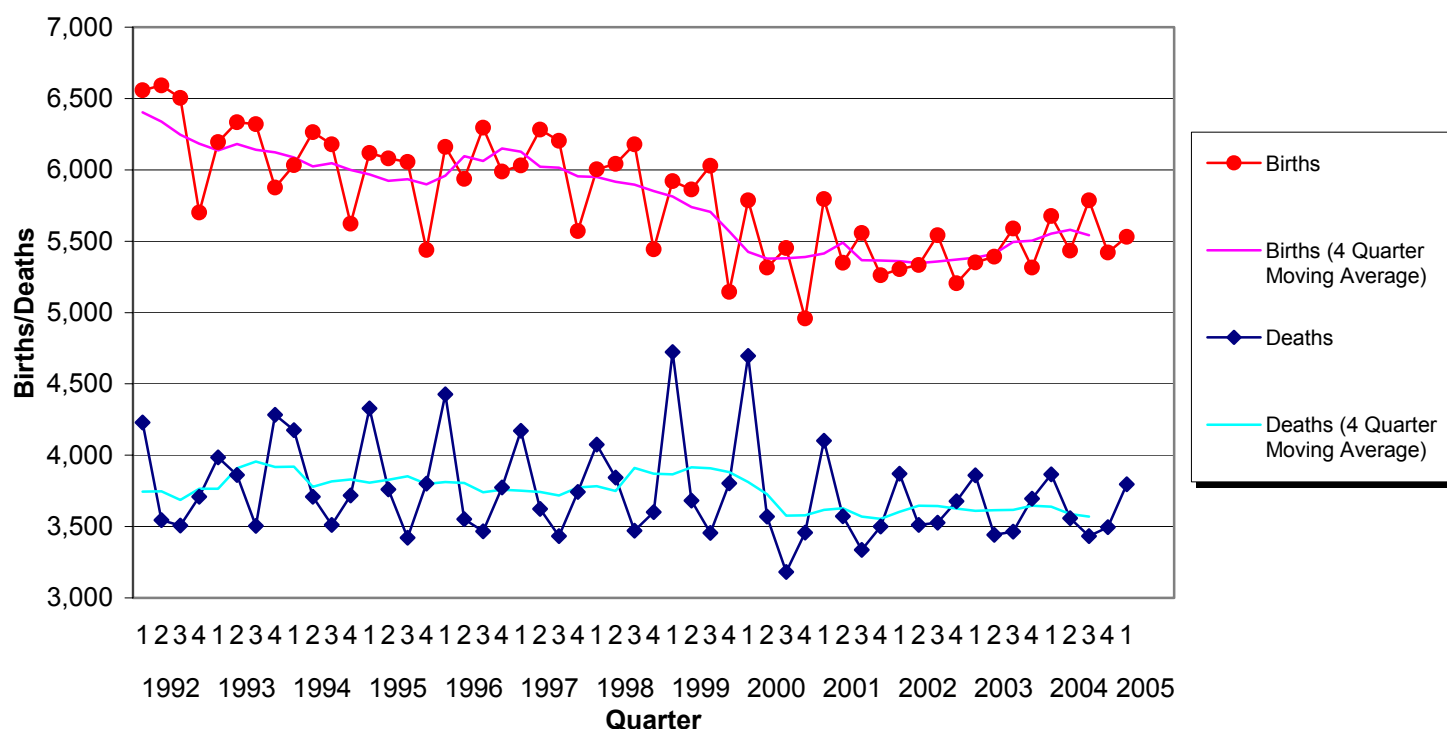
- Deaths registered during the first quarter of 2005 numbered 3,796 (1,838 males and 1,958 females). The annualised rate was 8.9 deaths per 1,000 of the estimated population, which was 0.2 below that for the corresponding quarter of 2004.
- Deaths of children aged under one year numbered 29 representing an infant mortality rate of 5.1 per 1,000 live births registered, which was 0.2 below that for the corresponding quarter of 2004.
- The number of deaths from cancer totalled 946 comprising of 481 males and 465 females. Cancer deaths accounted for 24.9 percent of the total deaths in this quarter.
- There were 422 male and 294 female deaths due to ischaemic heart disease in this quarter. These accounted for 18.9 percent of the total deaths in the quarter.
- There were 45 deaths caused by suicides or events of undetermined intent in the first quarter of 2005, this compares to 37 deaths in the same quarter in 2004.

##### *MRSA related deaths in 2004*

- There were 44 deaths registered in 2004 where methicillin resistant *Staphylococcus Aureus* (MRSA) was mentioned on the death certificate. On eight of these occasions, MRSA was recorded as the main cause of death.

Attached are a number of standard tables, which give some further details of the registration events in the period January-March 2005 and of the MRSA related deaths in 2004.

**Figure 1. QUARTERLY BIRTHS AND DEATHS, 1992 to 2005**



Note: Non-zero y axis

**Table 1. VITAL STATISTICS BY QUARTER FROM 1 JANUARY 2002**

YEAR	QUARTER	BIRTHS	PERC. OUTSIDE MARRIAGE	STILL- BIRTHS	DEATHS		
					ALL CAUSES	CANCER	ISCHAEMIC HEART DISEASE
2002	1st	5,304	33.7	23	3,871	877	790
	2nd	5,334	33.1	30	3,511	887	707
	3rd	5,542	33.5	32	3,527	944	717
	4th	5,205	33.6	37	3,677	944	734
2003	1st	5,350	34.4	29	3,860	906	786
	2nd	5,392	33.1	27	3,442	889	723
	3rd	5,590	34.1	25	3,464	989	644
	4th	5,316	35.9	27	3,696	973	690
2004	1st	5,677	35.2	27	3,867	935	761
	2nd	5,435	33.7	33	3,558	921	660
	3rd	5,786	33.9	26	3,434	939	663
	4th	5,420	35.3	27	3,495	962	697
2005	1st	5,530	36.3	31	3,796	946	716

**Table 2. VITAL STATISTICS BY MONTH FROM JANUARY 2003**

<b>YEAR</b>	<b>REGISTRATION MONTH</b>	<b>BIRTHS</b>	<b>STILL-BIRTHS</b>	<b>DEATHS</b>
<b>2003</b>	January	2,109	9	1,432
	February	1,546	9	1,236
	March	1,695	11	1,192
	April	1,799	9	1,149
	May	1,795	7	1,133
	June	1,798	11	1,160
	July	1,982	10	1,190
	August	1,729	8	1,063
	September	1,879	7	1,211
	October	2,032	10	1,266
	November	1,705	9	1,222
	December	1,579	8	1,208
<b>2004</b>	January	2,145	13	1,405
	February	1,614	6	1,200
	March	1,918	8	1,262
	April	1,828	10	1,236
	May	1,719	13	1,117
	June	1,889	10	1,205
	July	1,846	7	1,153
	August	1,885	7	1,140
	September	2,055	12	1,141
	October	1,884	6	1,160
	November	1,978	12	1,243
	December	1,558	9	1,092
<b>2005</b>	January	2,162	9	1,306
	February	1,654	12	1,216
	March	1,714	10	1,274

**Table 3. VITAL STATISTICS BY AREA (QUARTER ENDED 31 MARCH 2005)**

AREA <sup>1</sup>	ESTIMATED POPULATION 30 JUNE 2003	EVENTS REGISTERED									
		BIRTHS				STILL BIRTHS	DEATHS BY AGE			CAUSE OF DEATH	
		LIVE BIRTHS	BIRTH RATE	OUTSIDE MARRIAGE			ALL AGES	DEATH RATE	UNDER 1 YEAR	CANCER	ISCHAEMIC HEART DISEASE
		Number	%								
<b>Northern Ireland</b>	<b>1,702,600</b>	<b>5,530</b>	<b>13.0</b>	<b>2,010</b>	<b>36</b>	<b>31</b>	<b>3,796</b>	<b>8.9</b>	<b>29</b>	<b>946</b>	<b>716</b>
<b>Eastern Board</b>	<b>663,900</b>	<b>1,945</b>	<b>11.7</b>	<b>838</b>	<b>43</b>	<b>11</b>	<b>1,670</b>	<b>10.1</b>	<b>9</b>	<b>410</b>	<b>313</b>
Ards	74,400	223	12.0	73	33	2	193	10.4	1	42	40
Belfast	271,600	812	12.0	464	57	3	722	10.6	6	179	122
Castlereagh	66,100	158	9.6	40	25	-	180	10.9	-	56	37
Down	65,200	234	14.4	80	34	-	148	9.1	1	31	34
Lisburn	109,600	327	11.9	127	39	5	218	8.0	-	55	40
North Down	77,100	191	9.9	54	28	1	209	10.8	1	47	40
<b>Northern Board</b>	<b>432,800</b>	<b>1,414</b>	<b>13.1</b>	<b>467</b>	<b>33</b>	<b>11</b>	<b>951</b>	<b>8.8</b>	<b>8</b>	<b>247</b>	<b>177</b>
Antrim	49,300	171	13.9	57	33	1	100	8.1	1	22	21
Ballymena	59,500	194	13.0	63	32	2	140	9.4	2	25	21
Ballymoney	27,800	98	14.1	28	29	1	55	7.9	3	10	9
Carrickfergus	38,500	117	12.2	51	44	-	86	8.9	-	28	17
Coleraine	56,000	156	11.1	56	36	2	130	9.3	-	49	22
Cookstown	33,400	123	14.7	42	34	-	77	9.2	-	23	15
Larne	30,900	87	11.2	40	46	1	77	10.0	1	18	15
Magherafelt	40,800	160	15.7	40	25	-	74	7.2	-	18	16
Moyle	16,300	56	13.7	17	30	2	31	7.6	-	8	5
Newtownabbey	80,300	252	12.6	73	29	2	181	9.0	1	46	36
<b>Southern Board</b>	<b>319,000</b>	<b>1,213</b>	<b>15.2</b>	<b>355</b>	<b>29</b>	<b>5</b>	<b>613</b>	<b>7.7</b>	<b>7</b>	<b>145</b>	<b>124</b>
Armagh	55,400	205	14.8	46	22	1	113	8.2	-	26	26
Banbridge	43,100	174	16.2	50	29	-	89	8.3	2	20	19
Craigavon	82,200	285	13.9	108	38	3	142	6.9	1	37	22
Dungannon	48,700	195	16.0	48	25	-	97	8.0	2	19	21
Newry & Mourne	89,600	354	15.8	103	29	1	172	7.7	2	43	36
<b>Western Board</b>	<b>286,900</b>	<b>958</b>	<b>13.4</b>	<b>350</b>	<b>37</b>	<b>4</b>	<b>562</b>	<b>7.8</b>	<b>5</b>	<b>144</b>	<b>102</b>
Fermanagh	58,700	190	12.9	55	29	-	153	10.4	2	36	31
Limavady	33,600	113	13.5	39	35	1	59	7.0	-	15	10
Derry	106,500	368	13.8	170	46	2	181	6.8	2	51	30
Omagh	49,600	169	13.6	46	27	1	96	7.7	1	24	19
Strabane	38,600	118	12.2	40	34	-	73	7.6	-	18	12

<sup>1</sup> Figures may not add due to rounding.

**Table 4. DEATHS REGISTERED DURING QUARTER ENDED 31 MARCH 2005 CLASSIFIED BY CAUSE,  
GENDER, HEALTH BOARD AND AGE GROUP**

ICD10 Code	Cause of death	Gender		Health Board				Age Group								
		Males	Females	Eastern	Northern	Southern	Western	0	1-14	15-34	35-44	45-54	55-64	65-74	75-84	85 +
<b>A00-Y98</b>	<b>All Causes of Death</b>	<b>1,838</b>	<b>1,957</b>	<b>1,670</b>	<b>950</b>	<b>613</b>	<b>562</b>	<b>28</b>	<b>16</b>	<b>76</b>	<b>68</b>	<b>166</b>	<b>354</b>	<b>665</b>	<b>1,286</b>	<b>1,136</b>
A00-B99	Certain Infectious and Parasitic Diseases	19	23	19	8	6	9	-	-	1	1	2	6	4	19	9
C00-D48	Neoplasms	494	478	420	254	151	147	-	1	10	16	57	160	247	324	157
C00-C97	Malignant Neoplasms	481	465	410	247	145	144	-	1	9	16	54	156	244	318	148
D50-D89	All Diseases of the Blood and Blood Forming Organs and Certain Disorders Involving the Immune Mechanism	6	3	2	3	-	4	-	-	-	-	-	1	1	3	4
E00-E90	Endocrine, Nutritional and Metabolic Diseases	38	46	30	26	15	13	-	1	1	1	5	6	14	31	25
F00-F99	Mental and Behavioural Disorders	40	72	60	21	23	8	-	-	2	5	7	5	6	30	57
G00-H95	Diseases of the Nervous System and the Sense Organs	54	81	58	38	17	22	1	3	9	6	5	13	12	41	45
I00-I99	Disease of the Circulatory System	679	685	581	344	229	210	-	1	3	9	47	90	248	540	426
I20-I25	Ischaemic Heart Disease	422	294	313	177	124	102	-	-	-	5	34	56	156	293	172
I60-I69	Cerebrovascular Disease	144	229	148	101	65	59	-	-	1	3	8	18	51	145	147
J00-J99	Diseases of the Respiratory System	270	343	288	148	92	85	2	2	1	2	2	27	84	201	292
K00-K93	Diseases of the Digestive System	67	68	76	23	20	16	-	-	3	9	14	18	25	36	30
L00-M99	All Diseases of Skin, Musculoskeletal System and Connective Tissue	10	14	9	9	2	4	-	-	-	-	-	3	3	8	10
N00-N99	Diseases of the Genitourinary System	38	45	28	27	15	13	-	-	1	1	-	5	6	31	39
O00-O99	Pregnancy, Childbirth and the Puerperium	-	-	-	-	-	-	-	-	-	-	-	-	-	-	-
P00-P96	Certain Conditions Originating in the Perinatal Period	8	6	5	3	4	2	14	-	-	-	-	-	-	-	-
Q00-Q99	Congenital Malformations, Deformations and Chromosomal Abnormalities	10	7	5	3	4	5	9	2	2	1	2	-	1	-	-
R00-R99	Signs, Symptoms and Abnormal Clinical and Laboratory Findings, N.E.C.	6	27	24	4	2	3	2	-	-	3	1	-	-	3	24
V01-Y98	All External Causes of Morbidity and Mortality	99	59	65	39	33	21	-	6	43	14	24	20	14	19	18
V01-V99	Transport Accidents	18	12	9	6	12	3	-	1	16	1	3	5	2	2	-
X60-X84, Y87.0 Y10-Y34, Y87.2	Suicide, Self-Inflicted Injury and Events of Undetermined Intent	35	10	20	8	12	5	-	2	17	5	12	5	4	-	-

**Table 5. ANNUAL DEATHS REGISTERED IN NORTHERN IRELAND WITH METHICILLIN RESISTANT *STAPHYLOCOCCUS AUREUS* (MRSA) MENTIONED ON THE DEATH CERTIFICATE (1997-2004)**

<b>Year</b>	<b>1997</b>	<b>1998</b>	<b>1999</b>	<b>2000</b>	<b>2001</b>	<b>2002</b>	<b>2003</b>	<b>2004<sup>P</sup></b>
<b>Mentioned on death certificate</b>								
All <i>Staphylococcus Aureus</i>	14	14	22	17	33	35	41	52
MRSA	7	10	13	14	17	26	30	44
Percentage of <i>Staphylococcus Aureus</i> mentions that were MRSA	50%	71%	59%	82%	52%	74%	73%	85%
<b>Underlying cause</b>								
All <i>Staphylococcus Aureus</i>	1	1	3	1	17	15	7	12
MRSA	1	-	-	1	7	10	4	8

<sup>P</sup> Provisional data

## **GENERAL NOTES**

The figures on births and deaths in this report are provisional. Final figures are published in the relevant Registrar General's Annual Report.

### **Births, stillbirths and deaths**

Figures relate to those registered during the quarter under review. A birth or stillbirth is assigned to the usual place of residence of mother and excludes births and stillbirths to non-Northern Ireland residents. Deaths are assigned to the usual residence of the deceased, if such residence is within Northern Ireland; otherwise to the place of occurrence and non-resident deaths are included in the figures.

### **Birth, stillbirth and death rates**

Rates for 2003 and 2004 data are calculated on the estimated home population as at 30<sup>th</sup> June 2003. All quarter rates have been annualised by multiplying the rates by 4.

### **Stillbirth**

Refers to a child which has been issued from its mother after the 24th week of pregnancy and which did not breathe or show any other sign of life.

### **Infant mortality**

Refers to all deaths in the first year of life.

### **Cancer**

Refers to all malignant neoplasms of the lymphatic and haematopoietic tissues, including Hodgkin's disease, leukaemia and aleukaemia.

### **Cause of death coding**

Each death registered in Northern Ireland is attributed to a single cause and coded in accordance with the International Statistical Classification of Diseases, Injuries and Causes of Death (ICD). The General Register Office in Northern Ireland changed from the ninth (ICD9) to the tenth (ICD10) edition from January 2001. Data in this bulletin prior to 2001 will be based on ICD9 and after 2001 will be based on ICD10. The ICD codes used for the causes of death in Tables 1 and 3 are as follows:

Cancer	<b>ICD9</b> 140-208	<b>ICD10</b> C00-C97
Ischaemic Heart Disease	<b>ICD9</b> 410-414	<b>ICD10</b> I20-I25

### **Suicide and self-inflicted injury and events of undetermined intent**

In the UK, in considering suicide events it is conventional to include cases where the cause of death is classified as either 'Suicide and self-inflicted injury' or 'Undetermined injury'. The codes used for 'Suicide and self-inflicted injury' are X60-X84 and Y87.0, and the codes used for 'Undetermined injury' are Y10-Y34 and Y87.2. In previous quarterly reports, events of undetermined intent were not combined with suicide and self-inflicted injury. Comparable figures for previous quarters are available on request.

### **Seasonality**

This short report presents selected information that illustrates seasonal variations in birth and deaths in Northern Ireland.

### **Staphylococcus Aureus/ Methicillin Resistant Staphylococcus Aureus (MRSA)**

Information on methicillin resistant *Staphylococcus Aureus* (MRSA) cannot be derived directly from ICD. Currently there are no codes relating to antibiotic resistance in ICD. Typically, patients who die with MRSA infections are vulnerable to a number of other conditions or have a chronic illness. It is possible to quantify the number of deaths in which MRSA has been mentioned on the death certificate; this has been derived by examining, both electronically and manually, the cause of death written by the doctor on the death certificate. To assist this process research has been undertaken to identify which ICD codes are related to MRSA. It is also possible to identify deaths where MRSA was the underlying cause of death, this is done by examining the deaths with *Staphylococcus Aureus* recorded as the underlying cause and then searching the text field of the death certificate to find if they were the methicillin resistant form of *Staphylococcus Aureus*. This information has been used to produce Table 5. Further information on MRSA mortality will be published later in the year.

**Further Information**

Further information on the statistics provided in this publication can be obtained from:

Customer Services  
Northern Ireland Statistics and Research Agency  
McAuley House  
2-14 Castle Street  
BELFAST, BT1 1SA  
Phone: 02890 348160  
Faxsimile: 02890 348161  
E-mail: [census.nisra@dfpni.gov.uk](mailto:census.nisra@dfpni.gov.uk)