

EDITION TWO – MAY 2000

The Inter Departmental Business Register (IDBR) is a statistical register, stored in the Office for National Statistics, Newport, South Wales, which contains details of approximately two million UK businesses. This booklet contains information on the Northern Ireland businesses whose details are held on the register – for example, how many there are, what they do and how many people they employ.



DETI
DEPARTMENT OF ENTERPRISE,
TRADE & INVESTMENT

CONTENTS

| | <u>Page Number</u> |
|--|--------------------|
| Introduction | 1 |
| What is the IDBR? | 1 |
| Why is it needed? | 1 |
| Business information held on the IDBR | 1 |
| How new businesses are brought onto the IDBR | 2 |
| Who uses the IDBR? | 2 |
| Who can use the IDBR? | 2 |
| Disclosure of statistical information held on the IDBR | 3 |
| | |
| Information available from the IDBR | |
| Businesses and employees in Northern Ireland | 4 |
| Businesses in District Council Areas | 11 |
| United Kingdom and Regional Comparisons | 27 |
| Comparisons with Republic of Ireland | 29 |
| VAT registrations and de-registrations | 30 |
| Foreign Ownership analyses | 35 |
| | |
| Further information | 38 |
| | |
| Annexes | |
| Annex 1 IDBR Structure | 39 |
| Annex 2 Glossary of IDBR Terms and Abbreviations | 40 |
| Annex 3 Analyses and Samples from the IDBR | 42 |

INTRODUCTION

What is the IDBR?

The Inter Departmental Business Register (IDBR) was introduced in 1994 and became fully operational in 1995. It is located in the Office for National Statistics (ONS) in Newport, South Wales and the two main administrative sources are the Value Added Tax (VAT) system from HM Customs & Excise and Pay As You Earn (PAYE) records from Inland Revenue. It complies with European Union regulation 2186/93 on harmonisation of business registers for statistical purposes. This statistical register comprises 2 million UK enterprises (the statistical term that most closely equates to a business). Approximately 63,000 of these enterprises are in Northern Ireland. The register comprises companies, sole proprietors, partnerships, public authorities, central government departments, local authorities and non-profit making organisations. Its objective is to maintain an integrated and comprehensive register of all businesses to support statistical inquiries and promote consistency in government statistics. It is a dynamic register which is updated daily to reflect up-to-date information collected from various economic surveys and inquiries. The IDBR provides 98% coverage of the economy. All sectors are covered, although no extensive analysis is available for agriculture. Areas not covered include some very small businesses (such as self-employed persons, those businesses without employees and those which have a low turnover) and some non-profit making organisations. IDBR section in Statistics Research Branch, DETI is responsible for maintaining the Northern Ireland element of this UK-wide register so that it can be used as the sampling frame for Government business surveys.

Why is it needed?

The IDBR enables Government to conduct efficient and cost effective inquiries whilst minimising the burden on businesses. It is used for both national accounts and labour market statistics, as well as providing basic information on the structure of the economy (for example, business births and deaths). In short, it is used in four main ways:-

- to select the businesses to be included in the inquiries,
- to mail forms,
- to enable estimates to be made for businesses who do not respond (imputation) or who were not asked to participate in any particular inquiry (grossing up), and
- to produce analyses.

The register must therefore be comprehensive in coverage, accurate, up-to-date and contain the minimum amount of duplication.

Business information held on the IDBR

The main business data held are name, address, standard industrial classification (SIC(92)), employees, employment and turnover (updated quarterly from HM Customs and Excise). This information is supplemented by:

- Legal Status (company, sole proprietor, partnership, etc.)
- Parent company information - what businesses they own.
- Country of ownership details.
- Company registration number (CRN).

- Value of goods traded with EU Member States from Intrastat.
- Inquiry history - what statistical inquiries the business has been selected for since the IDBR became fully operational.
- Inquiry specific address - a business may have two distinct sites, for example, one for production activity and the other for research and development. The business may want inquiry forms solely relating to research and development to be sent directly to that site and thus inquiry specific address details are stored on the IDBR.
- Special sampling facilities - markers to identify when a business should be included or excluded from a specific inquiry.

How new businesses are brought onto the IDBR

The main administrative sources for the IDBR are HM Customs and Excise for VAT information and Inland Revenue for PAYE information. HM Customs and Excise send ONS weekly information on VAT registrations and de-registrations and once a month a list of 'births' is forwarded to DETI. Similarly Inland Revenue send ONS quarterly information on all PAYE schemes operating in the United Kingdom and DETI receive a list of those which are births in Northern Ireland. From these lists, IDBR section in Statistics Research Branch, DETI continually "prove" new businesses in Northern Ireland. Approximately 5,000 forms per annum are issued to such businesses in order to obtain industry and employment details - in other words, to "prove" their existence for statistical purposes. Additional forms are issued as and when IDBR section become aware of new businesses opening, from sources such as the media and local knowledge. Once these businesses are proved they immediately become available for selection for various Government business surveys.

Who uses the IDBR?

- Office for National Statistics - for statistical inquiries and analysis.
- Department of Enterprise, Trade and Investment - for statistical inquiries and analysis. Currently DETI is the only Northern Ireland Department with a link to the IDBR.
- Department of the Environment, Transport and the Regions (GB) and the Department for Regional Development (NI) - for construction inquiries.
- Department of Trade and Industry - for statistical inquiries and analysis, mainly relating to small firms. Information on VAT registrations and de-registrations published by DTI is contained later in this booklet.
- Ministry of Agriculture, Fisheries and Food - for analysis.
- The National Assembly for Wales - for statistical inquiries and analysis.
- The Scottish Executive - for analysis.
- Department for Education and Employment - for statistical inquiries.

Who can use the IDBR?

- Central Government (GB and NI) - for statistical and analytical purposes.
- Local authorities (GB only) - for planning purposes. Northern Ireland District Councils are currently prohibited from accessing the live register to either view or use individual company details due to legislative constraints. They are, of course, able to use aggregate data as per other external customers and members of the public.
- Research organisations - to carry out Government surveys under contract.
- General public - analysis and publications which have undergone disclosure checks.

Disclosure of statistical information held on the IDBR

The information held on the IDBR is classified as "Restricted-Commercial", or "Commercial-in-Confidence" and thus data on individual businesses may not be disclosed. Disclosure of information contained on the register without the consent of the undertaking (business) is an offence under the Statistics of Trade and Employment (Northern Ireland) Order 1988. However, various analyses of aggregate data can be run from the IDBR and samples of such data are shown in the following pages.

Notes:

1. Where reference is made to the year in a table/figure title (for example, Table 4), this relates to a particular point in time (here February 1999) when a frozen extract of the register is taken. Thus the corresponding figures are **not** annual averages.
2. Figures in the tables have been rounded to the nearest five and thus may not add to totals.
3. Where there are less than 20 businesses in a particular table cell, the employee figure has been suppressed to avoid disclosure.
4. An asterisk (*) denotes that the figure is not shown due to there being either no businesses or employees in that particular cell or due to confidentiality constraints. A confidentiality constraint is where measures are taken such as rounding and suppression of figures (as outlined above) to avoid disclosure of information on individual businesses.
5. The terms "businesses" and "enterprises" are used synonymously throughout this booklet.
6. No extensive analyses are available for the agricultural sector, as both MAFF and the Department of Agriculture and Rural Development (DARD) maintain their own registers and do not widely use the IDBR as the sampling frame for their surveys.
7. Employee figures for Northern Ireland held on the IDBR come from four main sources:
 - (i) the 1997 Northern Ireland Census of Employment, the figures having been loaded onto the IDBR in the autumn of 1998, (1999 figures are due to be loaded onto the IDBR in the autumn of 2000)
 - (ii) regular and miscellaneous proving exercises,
 - (iii) the Northern Ireland Quarterly Employment Survey, and
 - (iv) figures from other surveys conducted by Statistics Research Branch, DETI and ONS (for example, the Annual Business Inquiry and the Annual Register Inquiry).

BUSINESSES AND EMPLOYEES IN NORTHERN IRELAND

Note: The figures in Table 1 and Figure 1 exclude (i) agriculture (but include animal husbandry service activities and hunting, trapping and game propagation) and (ii) a small number of businesses which are imputed to have 20 or more employees but for which DETI have no information. Such businesses are commonly referred to as "unproven" and proving forms are regularly and continuously issued in order to obtain the relevant details.

Table 1 shows that Northern Ireland is a small business economy, where 85% of businesses have less than 10 employees, compared with only 2.9% having 50 or more. However most employees work in large businesses - 44.1% work in a business that has 500 or more employees, just 0.3% of all businesses in Northern Ireland.

Table 1 Businesses and employees in Northern Ireland at March 2000

(a) Private and public sector

| Sizeband | 0¹ | 1-9 | 10-19 | 20-49 | 50-99 | 100-199 | 200-249 | 250-499 | 500+ | Total |
|-----------------|----------------------|------------|--------------|--------------|--------------|----------------|----------------|----------------|-------------|--------------|
| Businesses | 11,368 | 26,461 | 3,348 | 2,041 | 639 | 313 | 64 | 133 | 123 | 44,490 |
| Employees | 0 | 81,220 | 44,614 | 60,967 | 43,070 | 43,660 | 14,193 | 45,697 | 263,219 | 596,640 |

¹ This sizeband includes sole proprietors and partnerships, holding companies and those companies which are not yet trading, for example, if a factory is under construction.

(b) Private sector

| Sizeband | 0 | 1-9 | 10-19 | 20-49 | 50-99 | 100-199 | 200-249 | 250-499 | 500+ | Total |
|-----------------|----------|------------|--------------|--------------|--------------|----------------|----------------|----------------|-------------|--------------|
| Businesses | 11,368 | 26,443 | 3,324 | 1,980 | 611 | 287 | 57 | 114 | 66 | 44,250 |
| Employees | 0 | 81,129 | 44,291 | 58,923 | 41,234 | 39,959 | 12,623 | 39,124 | 88,252 | 405,535 |

(c) Public sector

| Sizeband | 0 | 1-9 | 10-19 | 20-49 | 50-99 | 100-199 | 200-249 | 250-499 | 500+ | Total |
|-----------------|----------|------------|--------------|--------------|--------------|----------------|----------------|----------------|-------------|--------------|
| Businesses | 0 | 18 | 24 | 61 | 28 | 26 | 7 | 19 | 57 | 240 |
| Employees | 0 | 91 | 323 | 2,044 | 1,836 | 3,701 | 1,570 | 6,573 | 174,967 | 191,105 |

It is clear to see the public sector's importance as a major employer in Northern Ireland - almost one out of every three employees works in the public sector (including both central and local government).

Figure 1 Employees in private and public sector businesses, March 2000

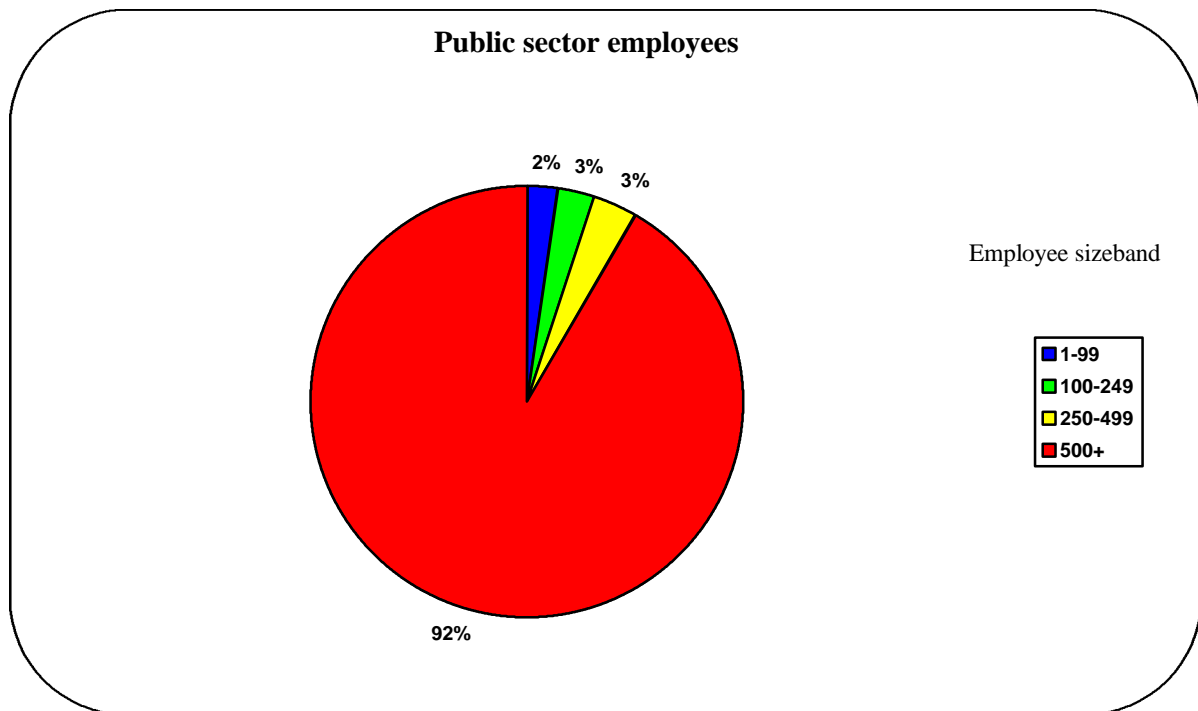
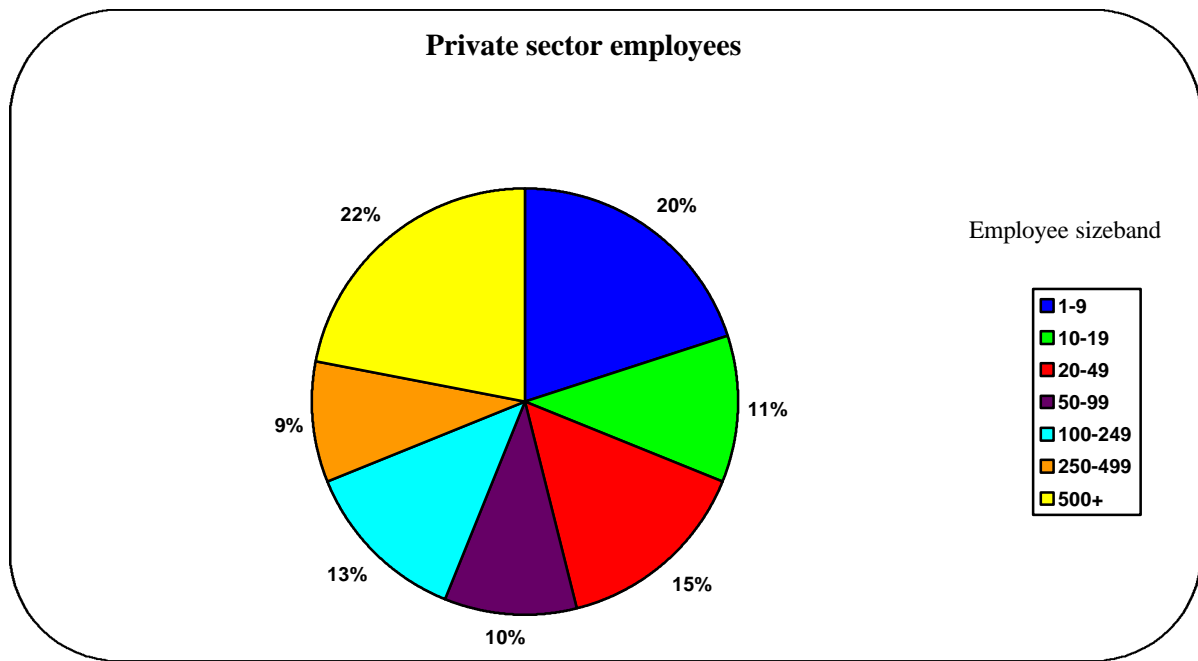


Table 2 Enterprises in Northern Ireland by number of local units at January 2000

More than half of all enterprises in Northern Ireland on the IDBR have no local units (a local unit is an individual site (factory, shop, office, etc) at which an enterprise conducts its business). Such enterprises are mainly sole proprietors or partners conducting their business without any employees. 43% of enterprises have one local unit with the remaining 4% having 2 or more local units.

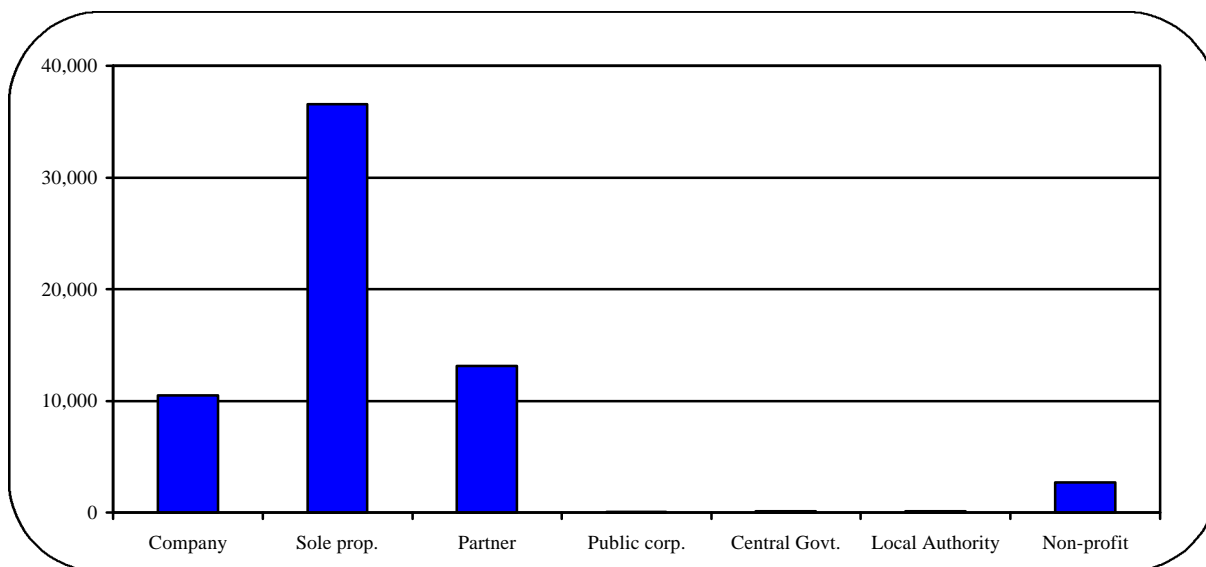
| Number of local units in business | Businesses | % | Employment | % |
|-----------------------------------|---------------|------|----------------|------|
| 0 | 33,358 | 52.8 | 58,787 | 8.9 |
| 1 | 27,157 | 43.0 | 245,853 | 37.1 |
| 2+ | 2,658 | 4.2 | 357,081 | 54.0 |
| Total | 63,173 | | 661,721 | |

Table 3 Enterprises in Northern Ireland by legal status at January 2000

58% of enterprises in Northern Ireland are sole proprietors. However private sector companies comprise 40% of employment in Northern Ireland.

| Legal Status | Businesses | % | Employment | % |
|----------------------------------|---------------|------|----------------|------|
| 1 Company | 10,525 | 16.7 | 266,304 | 40.2 |
| 2 Sole Proprietor | 36,579 | 57.9 | 96,240 | 14.5 |
| 3 Partnership | 13,123 | 20.8 | 77,389 | 11.7 |
| 4 Public corporation | 25 | 0.0 | 8,832 | 1.3 |
| 5 Central Government | 123 | 0.2 | 167,058 | 25.2 |
| 6 Local Authority | 97 | 0.2 | 17,328 | 2.6 |
| 7 Non profit making organisation | 2,701 | 4.3 | 28,570 | 4.3 |
| Total | 63,173 | | 661,721 | |

Figure 2 Enterprises in Northern Ireland by legal status at January 2000



Note: The data in tables 2 and 3 and figure 2 are a snapshot of the entire Northern Ireland element of the IDBR at a particular point in time (January 2000). As the register changes on a daily basis, the data cannot and should not be compared with other tables in this booklet.

Table 4 Businesses and employees in Northern Ireland by broad industry group, 1999

The data in Figures 3 and 4 and Tables 4-11 are based on VAT registered businesses. Those businesses with only a PAYE reference are excluded to avoid any possible duplication. Thus coverage in VAT exempt areas such as health, education and public administration is incomplete.

| SIC(92) Section | Businesses | % of total | Employees | % of total |
|--|---------------|------------|----------------|------------|
| A Agriculture, Hunting and Forestry | 17,095 | 32.9 | 5,210 | 1.5 |
| B Fishing | 215 | 0.4 | 160 | 0.0 |
| C Mining and Quarrying | 95 | 0.2 | 1,685 | 0.5 |
| D Manufacturing | 3,810 | 7.3 | 98,075 | 28.6 |
| E Electricity, Gas and Water Supply | 15 | 0.0 | 3,115 | 0.9 |
| F Construction | 6,270 | 12.1 | 27,120 | 7.9 |
| G Wholesale & Retail Trade; Repair of Motor Vehicles, Motorcycles and Personal and Household Goods | 12,265 | 23.6 | 75,080 | 21.9 |
| H Hotels and Restaurants | 2,730 | 5.3 | 27,070 | 7.9 |
| I Transport, Storage and Communication | 1,905 | 3.7 | 12,030 | 3.5 |
| J Financial Intermediation | 165 | 0.3 | 7,925 | 2.3 |
| K Real Estate, Renting and Business Activities | 5,130 | 9.9 | 30,740 | 9.0 |
| L Public Administration and Defence; Compulsory Social Security | 20 | 0.0 | 21,425 | 6.2 |
| M Education | 115 | 0.2 | 8,110 | 2.4 |
| N Health & Social Work | 265 | 0.5 | 6,835 | 2.0 |
| O Other Community Services, Social and Personal Service Activities | 1,865 | 3.6 | 18,225 | 5.3 |
| Total | 51,965 | | 342,805 | |

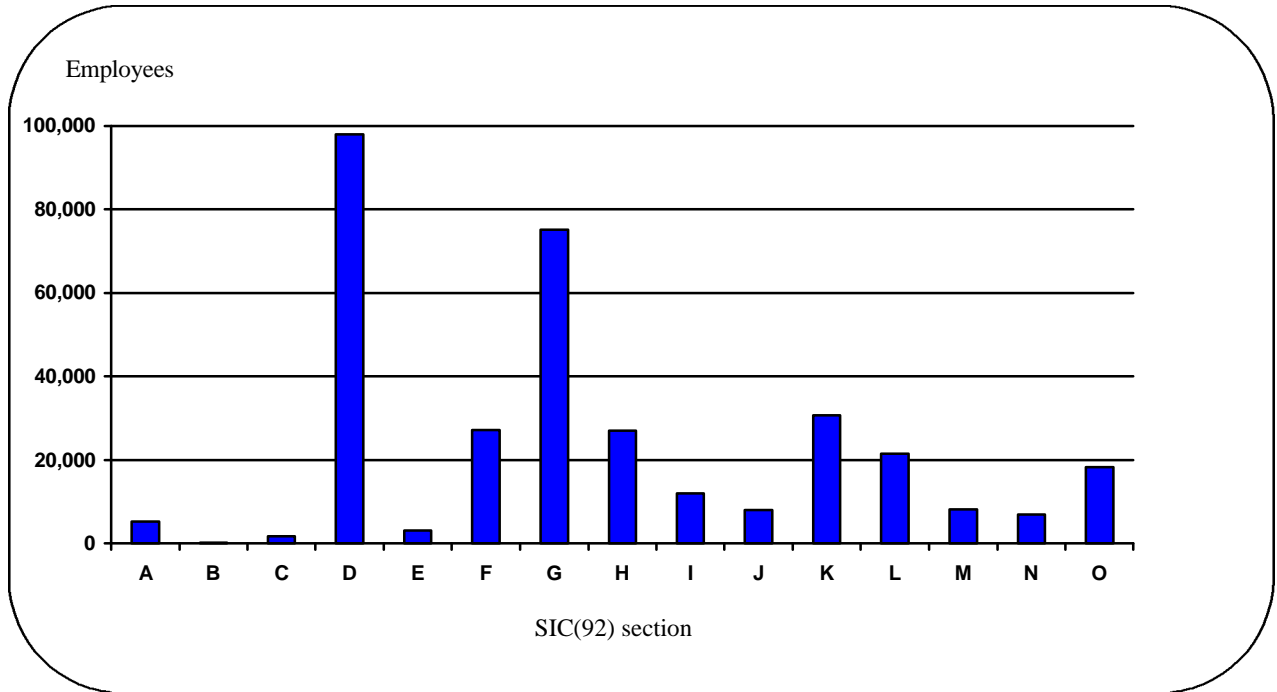
Table 5 Changes in numbers of businesses and employees in Northern Ireland by broad industry group since last year

| SIC(92) Section | Businesses | % change | Employees | % change |
|--|------------|------------|--------------|------------|
| A Agriculture, Hunting and Forestry | -275 | -1.6 | -1,080 | -17.2 |
| B Fishing | -5 | -2.3 | -70 | -30.4 |
| C Mining and Quarrying | -5 | -5.0 | 60 | 3.7 |
| D Manufacturing | 20 | 0.5 | -1,055 | -1.1 |
| E Electricity, Gas and Water Supply | -10 | -40.0 | -345 | -10.0 |
| F Construction | 245 | 4.1 | 3,390 | 14.3 |
| G Wholesale & Retail Trade; Repair of Motor Vehicles, Motorcycles and Personal and Household Goods | -20 | -0.2 | 1,095 | 1.5 |
| H Hotels and Restaurants | 25 | 0.9 | 1,855 | 7.4 |
| I Transport, Storage and Communication | 50 | 2.7 | -505 | -4.0 |
| J Financial Intermediation | 5 | 3.1 | 1,615 | 25.6 |
| K Real Estate, Renting and Business Activities | 315 | 6.5 | 3,030 | 10.9 |
| L Public Administration and Defence; Compulsory Social Security | 5 | -25.0 | -385 | -1.8 |
| M Education | 25 | 27.8 | -5,160 | -38.9 |
| N Health & Social Work | 10 | 3.9 | 205 | 3.1 |
| O Other Community Services, Social and Personal Service Activities | -215 | -10.3 | -10 | -0.1 |
| Total | 170 | 0.3 | 2,640 | 0.8 |

Note: Care should be taken when using these figures as they are calculated using rounded figures for both years. However they give a broad indication of changes by broad industry group over the year.

Figure 3 Employees in private sector VAT registered businesses, 1999

In 1999, one third of private sector businesses registered for VAT in Northern Ireland were in agriculture. These businesses employed 1.5% of private sector employees. A further 23.6% of private sector businesses were in the wholesale and retail industries, employing over one fifth of private sector employees. The manufacturing sector employed 28.6% of private sector employees.



See previous page for a list of SIC(92) sections.

Figure 4 illustrates the share of businesses - split by employee sizeband - for the broad industry groups. It is evident that the majority of agriculture and fishing businesses are run by self-employed persons who have no employees. In both the manufacturing and service sector industries, the majority of businesses employ between 1 and 49 people. One quarter of the businesses in the electricity, gas and water supply industry group employ more than 50 people.

Figure 4 VAT registered businesses by broad industry group and employee sizeband, 1999

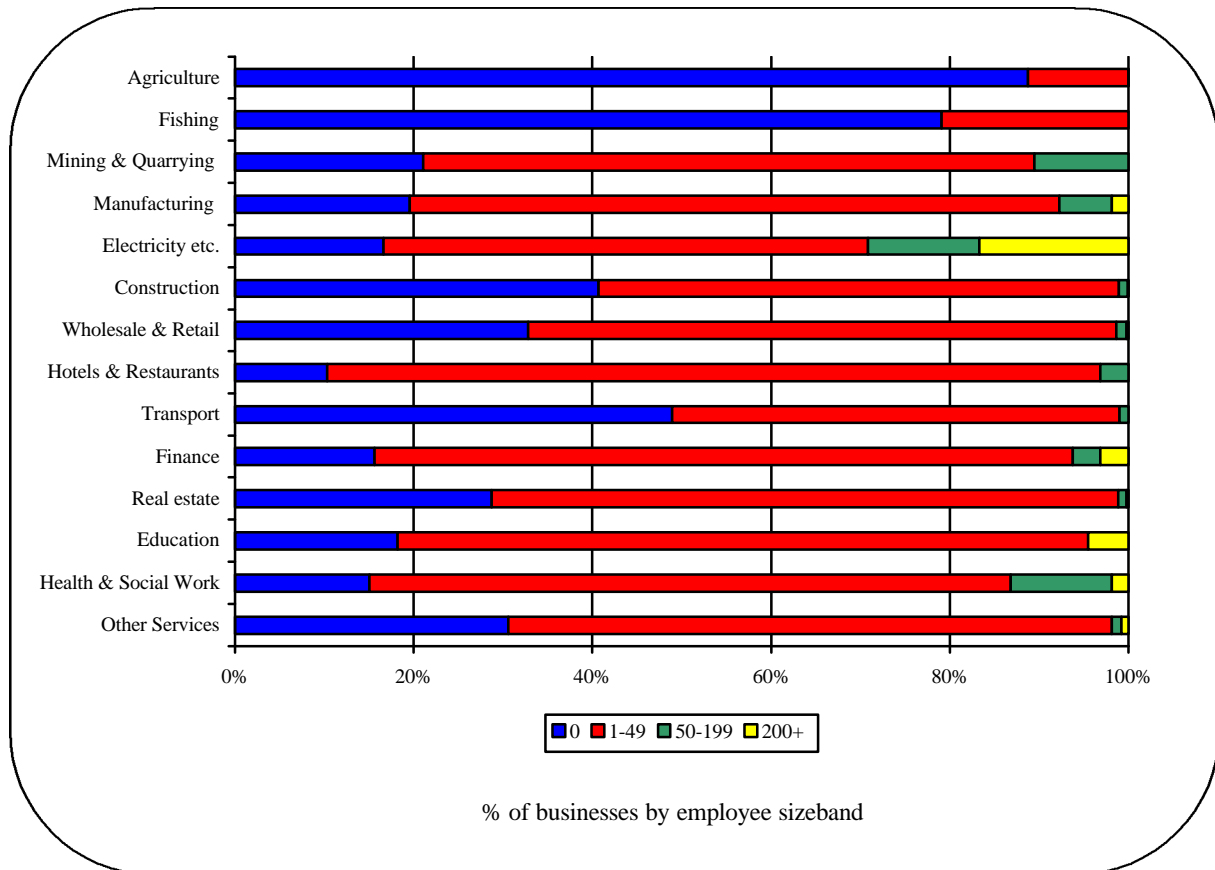


Table 6 VAT-based enterprises by industrial classification and turnover, 1999

55.8% of enterprises in Northern Ireland had a turnover of less than £100,000 in 1999, whereas only 7.4% had a turnover of £1,000,000 or more. The comparable figures in Great Britain were 48.8% and 8.9% respectively.

| Industrial classification | Turnover (£'000) | | | | | | | Total |
|---|------------------|---------------|---------------|--------------|--------------|--------------|------------|---------------|
| | 1-49 | 50-99 | 100-249 | 250-499 | 500-999 | 1,000-4,999 | 5,000+ | |
| Agriculture, forestry & fishing | 11,595 | 2,970 | 2,125 | 415 | 135 | 65 | 10 | 17,310 |
| Production: | 610 | 705 | 870 | 550 | 385 | 565 | 235 | 3,920 |
| <i>Of which, Mining/quarrying & utilities</i> | 15 | 10 | 20 | 15 | 10 | 30 | 10 | 110 |
| <i>Of which, Manufacturing</i> | 595 | 695 | 850 | 535 | 375 | 535 | 225 | 3,810 |
| Construction | 1,580 | 1,570 | 1,465 | 725 | 450 | 410 | 70 | 6,270 |
| Motor Trades | 290 | 380 | 455 | 335 | 335 | 460 | 85 | 2,340 |
| Wholesale | 565 | 500 | 685 | 455 | 370 | 570 | 150 | 3,300 |
| Retail | 660 | 1,430 | 2,100 | 1,200 | 715 | 455 | 65 | 6,625 |
| Hotels & Catering | 200 | 835 | 970 | 365 | 215 | 130 | 10 | 2,730 |
| Transport | 420 | 530 | 345 | 155 | 115 | 150 | 35 | 1,750 |
| Post & Telecommunications | 65 | 35 | 30 | 15 | 5 | 10 | 0 | 155 |
| Finance | 50 | 35 | 25 | 15 | 10 | 10 | 20 | 165 |
| Property & Business | 1,405 | 1,370 | 1,215 | 530 | 345 | 235 | 35 | 5,130 |
| Education | 25 | 30 | 30 | 10 | 10 | 5 | 0 | 115 |
| Health | 65 | 60 | 55 | 35 | 35 | 10 | 0 | 265 |
| Public admin. & other services | 490 | 540 | 470 | 210 | 100 | 60 | 10 | 1,885 |
| Northern Ireland | 18,025 | 10,990 | 10,845 | 5,010 | 3,230 | 3,135 | 730 | 51,965 |
| Great Britain | 349,275 | 403,620 | 375,565 | 172,450 | 105,505 | 102,035 | 35,285 | 1,543,740 |
| United Kingdom | 367,300 | 414,610 | 386,410 | 177,460 | 108,735 | 105,170 | 36,015 | 1,595,705 |

Source: Size Analysis of United Kingdom Businesses (Business Monitor PA1003), 1999

BUSINESSES IN DISTRICT COUNCIL AREAS

Table 7 shows the number of businesses by broad industry group in each of the District Council Areas (DCA) in Northern Ireland. Agriculture dominates the economy in rural and border DCAs with services and retail businesses predominant in urban DCAs such as Belfast and Derry.

Table 8 shows the number of businesses by employee sizeband. Rural and border DCAs have the most number of VAT-registered businesses with 0 employees, with the majority of these being self-employed farmers. As one would expect, Belfast and Derry DCAs have half of those businesses which employ 500 or more people.

Table 9 shows the number of businesses and employees by broad industry group in each of the DCAs.

Note: Each business is allocated to a DCA based on the address where it is registered for VAT (normally the head office, if the business has a number of work sites). Thus a business with its head office in Belfast is included in the figures for Belfast, even though it may have work sites in other District Council areas – for example, banks. Similarly, companies that have their United Kingdom headquarters in Great Britain (such as Marks and Spencer plc), will be included only in the region where their head office is based. Therefore many multi-national companies are also excluded from these tables.

Table 7 Number of VAT - based enterprises by broad industry group and District Council, 1999

| District Council | Agriculture | Production | Construction | Motor Trades | Wholesale | Retail | Hotel & Catering | Transport | Post & Telecom | Finance | Property & Business | Education | Health | Public admin & other services | Total |
|-------------------------|---------------|--------------|--------------|--------------|--------------|--------------|------------------|--------------|----------------|------------|---------------------|------------|------------|-------------------------------|---------------|
| Antrim | 565 | 105 | 210 | 70 | 85 | 145 | 80 | 110 | 15 | 0 | 125 | 5 | 10 | 45 | 1,580 |
| Ards | 580 | 195 | 265 | 100 | 150 | 335 | 130 | 50 | 5 | 10 | 185 | 5 | 10 | 90 | 2,105 |
| Armagh | 1,225 | 165 | 210 | 110 | 160 | 220 | 105 | 135 | 5 | 5 | 110 | 5 | 5 | 60 | 2,510 |
| Ballymena | 930 | 135 | 260 | 110 | 115 | 275 | 105 | 60 | 5 | 0 | 160 | 0 | 5 | 50 | 2,210 |
| Ballymoney | 555 | 70 | 150 | 60 | 45 | 120 | 35 | 40 | 5 | 0 | 55 | 0 | 5 | 15 | 1,145 |
| Banbridge | 780 | 100 | 230 | 65 | 85 | 165 | 65 | 60 | 10 | 0 | 90 | 0 | 10 | 45 | 1,705 |
| Belfast | 20 | 540 | 495 | 240 | 600 | 1,220 | 455 | 195 | 25 | 75 | 1,655 | 35 | 55 | 465 | 6,075 |
| Carrickfergus | 70 | 65 | 70 | 25 | 40 | 100 | 40 | 10 | 5 | 0 | 75 | 5 | 5 | 30 | 545 |
| Castlereagh | 95 | 110 | 175 | 50 | 110 | 175 | 45 | 35 | 5 | 5 | 130 | 0 | 10 | 55 | 1,005 |
| Coleraine | 575 | 120 | 195 | 80 | 95 | 245 | 135 | 40 | 5 | 5 | 175 | 5 | 10 | 60 | 1,745 |
| Cookstown | 895 | 130 | 210 | 95 | 70 | 150 | 70 | 65 | 0 | 0 | 70 | 0 | 5 | 25 | 1,790 |
| Craigavon | 450 | 225 | 265 | 125 | 155 | 315 | 110 | 85 | 5 | 5 | 210 | 5 | 10 | 90 | 2,055 |
| Derry | 370 | 180 | 290 | 85 | 155 | 330 | 140 | 55 | 5 | 5 | 275 | 5 | 10 | 80 | 1,985 |
| Down | 765 | 120 | 390 | 95 | 110 | 275 | 150 | 40 | 10 | 5 | 155 | 0 | 10 | 75 | 2,195 |
| Dungannon | 1,280 | 235 | 250 | 90 | 115 | 260 | 100 | 75 | 5 | 5 | 130 | 5 | 15 | 40 | 2,595 |
| Fermanagh | 1,865 | 130 | 240 | 140 | 100 | 315 | 125 | 50 | 10 | 5 | 110 | 5 | 20 | 65 | 3,180 |
| Larne | 385 | 50 | 95 | 40 | 45 | 125 | 60 | 55 | 0 | 5 | 65 | 0 | 0 | 40 | 960 |
| Limavady | 420 | 55 | 180 | 35 | 30 | 115 | 60 | 20 | 0 | 0 | 45 | 5 | 5 | 25 | 995 |
| Lisburn | 620 | 285 | 450 | 150 | 295 | 315 | 125 | 125 | 10 | 10 | 300 | 5 | 15 | 145 | 2,850 |
| Magherafelt | 795 | 155 | 325 | 75 | 65 | 155 | 70 | 75 | 5 | 5 | 95 | 5 | 10 | 20 | 1,845 |
| Moyle | 390 | 25 | 80 | 25 | 30 | 70 | 45 | 15 | 0 | 0 | 20 | 0 | 5 | 10 | 715 |
| Newry & Mourne | 1,155 | 250 | 435 | 135 | 195 | 345 | 155 | 170 | 10 | 10 | 180 | 5 | 15 | 95 | 3,155 |
| Newtownabbey | 175 | 155 | 210 | 115 | 175 | 225 | 80 | 90 | 10 | 5 | 205 | 5 | 10 | 75 | 1,530 |
| North Down | 65 | 125 | 155 | 65 | 130 | 240 | 115 | 30 | 5 | 5 | 330 | 10 | 10 | 120 | 1,405 |
| Omagh | 1,455 | 115 | 280 | 95 | 90 | 215 | 75 | 30 | 5 | 5 | 135 | 5 | 10 | 35 | 2,545 |
| Strabane | 825 | 80 | 160 | 60 | 50 | 175 | 65 | 35 | 0 | 0 | 50 | 0 | 5 | 20 | 1,535 |
| Northern Ireland | 1,7310 | 3,920 | 6,270 | 2,340 | 3,300 | 6,625 | 2,730 | 1,750 | 155 | 165 | 5,130 | 115 | 265 | 1,885 | 51,965 |

Source: Size Analysis of United Kingdom Businesses (Business Monitor PA1003), 1999

Table 8 Number of VAT - based enterprises by employee sizeband and District Council, 1999

| Sizeband | 0 | 1 - 9 | 10 - 19 | 20 - 49 | 50 - 99 | 100 - 199 | 200 - 499 | 500+ | Total |
|---|---------------|---------------|----------------|----------------|----------------|------------------|------------------|-------------|---------------|
| District Council | | | | | | | | | |
| Antrim | 810 | 605 | 85 | 40 | 10 | 15 | 5 | * | 1,580 |
| Ards | 955 | 985 | 95 | 55 | 10 | 5 | * | * | 2,105 |
| Armagh | 1,520 | 825 | 90 | 55 | 10 | 5 | * | * | 2,510 |
| Ballymena | 1245 | 770 | 105 | 65 | 20 | * | 5 | * | 2,210 |
| Ballymoney | 675 | 390 | 35 | 30 | 5 | 5 | * | * | 1,145 |
| Banbridge | 1,050 | 540 | 65 | 30 | 10 | 5 | * | * | 1,705 |
| Belfast | 1,230 | 3,540 | 645 | 400 | 115 | 65 | 35 | 25 | 6,075 |
| Carrickfergus | 210 | 255 | 45 | 20 | 10 | * | 5 | * | 545 |
| Castlereagh | 390 | 470 | 85 | 30 | 15 | 5 | 5 | 5 | 1,005 |
| Coleraine | 805 | 735 | 100 | 70 | 20 | 5 | 5 | * | 1,745 |
| Cookstown | 1,140 | 540 | 60 | 35 | 10 | * | * | * | 1,790 |
| Craigavon | 855 | 930 | 145 | 65 | 35 | 10 | 15 | * | 2,055 |
| Derry | 755 | 955 | 160 | 70 | 15 | 10 | 5 | 5 | 1,985 |
| Down | 1,160 | 865 | 105 | 55 | 10 | 5 | * | * | 2,195 |
| Dungannon | 1,585 | 825 | 95 | 60 | 10 | 10 | 5 | * | 2,595 |
| Fermanagh | 2,245 | 770 | 90 | 55 | 15 | 5 | * | * | 3,180 |
| Larne | 530 | 350 | 55 | 15 | 5 | * | * | * | 960 |
| Limavady | 560 | 370 | 30 | 20 | 5 | * | * | * | 995 |
| Lisburn | 1,235 | 1,265 | 175 | 105 | 35 | 15 | 10 | * | 2,850 |
| Magherafelt | 1,130 | 595 | 55 | 35 | 15 | 5 | * | * | 1,845 |
| Moyle | 480 | 205 | 15 | 10 | * | * | * | * | 715 |
| Newry and Mourne | 1,655 | 1,210 | 160 | 95 | 15 | 5 | 5 | 5 | 3,155 |
| Newtownabbey | 530 | 735 | 125 | 75 | 30 | 15 | 5 | * | 1,530 |
| North Down | 480 | 735 | 105 | 55 | 15 | * | 5 | * | 1,405 |
| Omagh | 1,765 | 655 | 75 | 35 | 10 | 5 | * | * | 2,545 |
| Strabane | 980 | 465 | 55 | 20 | 5 | 5 | * | * | 1,535 |
| Northern Ireland | 25,975 | 20,585 | 2,850 | 1,605 | 460 | 210 | 120 | 50 | 51,965 |
| * Figure not shown due to there either being no businesses in the cell or due to confidentiality constraints. | | | | | | | | | |

Table 9 Businesses and employees by broad industry group and District Council, 1999¹

Antrim

| SIC(92) Section | Businesses¹ | % of total | Employees | % of total |
|---|-------------------------------|-------------------|------------------|-------------------|
| A Agriculture, Hunting and Forestry | 560 | 35.6 | 265 | 2.2 |
| B Fishing | 5 | 0.3 | * | * |
| C Mining and Quarrying | * | * | * | * |
| D Manufacturing | 105 | 6.7 | 3,210 | 26.2 |
| E Electricity, Gas and Water Supply | * | * | * | * |
| F Construction | 210 | 13.3 | 1,490 | 12.2 |
| G Wholesale & Retail Trade; Repair of Motor Vehicles, Motorcycles and Personal and Household Goods | 305 | 19.4 | 1,060 | 8.7 |
| H Hotels and Restaurants | 80 | 5.1 | 1,065 | 8.7 |
| I Transport, Storage and Communication | 125 | 7.9 | 715 | 5.8 |
| J Financial Intermediation | * | * | * | * |
| K Real Estate, Renting and Business Activities | 120 | 7.6 | 765 | 6.2 |
| L Public Administration and Defence; Compulsory Social Security | * | * | * | * |
| M Education | 5 | 0.3 | * | * |
| N Health & Social Work | 10 | 0.6 | * | * |
| O Other Community Services, Social and Personal Service Activities | 45 | 2.9 | 395 | 3.2 |
| Total | 1,570 | | 12,245 | |
| ¹ Figures are based on VAT registered businesses only. | | | | |
| * Figure not shown due to there either being no businesses in the cell or due to confidentiality constraints. | | | | |

Ards

| SIC(92) Section | Businesses¹ | % of total | Employees | % of total |
|---|-------------------------------|-------------------|------------------|-------------------|
| A Agriculture, Hunting and Forestry | 520 | 24.7 | 295 | 3.5 |
| B Fishing | 55 | 2.6 | 25 | 0.3 |
| C Mining and Quarrying | 5 | 0.2 | * | * |
| D Manufacturing | 195 | 9.3 | 2,875 | 34.1 |
| E Electricity, Gas and Water Supply | * | * | * | * |
| F Construction | 265 | 12.6 | 755 | 9.0 |
| G Wholesale & Retail Trade; Repair of Motor Vehicles, Motorcycles and Personal and Household Goods | 585 | 27.8 | 2,010 | 23.8 |
| H Hotels and Restaurants | 130 | 6.2 | 965 | 11.4 |
| I Transport, Storage and Communication | 55 | 2.6 | 105 | 1.2 |
| J Financial Intermediation | 10 | 0.5 | * | * |
| K Real Estate, Renting and Business Activities | 185 | 8.8 | 420 | 5.0 |
| L Public Administration and Defence; Compulsory Social Security | * | * | * | * |
| M Education | 5 | 0.2 | * | * |
| N Health & Social Work | 10 | 0.5 | * | * |
| O Other Community Services, Social and Personal Service Activities | 90 | 4.3 | 735 | 8.7 |
| Total | 2,105 | | 8,430 | |
| ¹ Figures are based on VAT registered businesses only. | | | | |
| * Figure not shown due to there either being no businesses in the cell or due to confidentiality constraints. | | | | |

¹ A 2 digit (divisional) SIC(92) by employee sizeband breakdown is available, subject to confidentiality constraints, for both individual District Council Areas and Northern Ireland as a whole. For further information please contact Statistics Research Branch, DETI at the address shown on page 38.

Armagh

| SIC(92) Section | Businesses ¹ | % of total | Employees | % of total |
|--|-------------------------|------------|--------------|------------|
| A Agriculture, Hunting and Forestry | 1,225 | 48.9 | 480 | 6.7 |
| B Fishing | * | * | * | * |
| C Mining and Quarrying | 10 | 0.4 | * | * |
| D Manufacturing | 155 | 6.2 | 1,640 | 22.8 |
| E Electricity, Gas and Water Supply | * | * | * | * |
| F Construction | 210 | 8.4 | 575 | 8.0 |
| G Wholesale & Retail Trade; Repair of Motor Vehicles, Motorcycles and Personal and Household Goods | 485 | 19.4 | 2,110 | 29.3 |
| H Hotels and Restaurants | 105 | 4.2 | 425 | 5.9 |
| I Transport, Storage and Communication | 135 | 5.4 | 705 | 9.8 |
| J Financial Intermediation | 5 | 0.2 | * | * |
| K Real Estate, Renting and Business Activities | 110 | 4.4 | 285 | 4.0 |
| L Public Administration and Defence; Compulsory Social Security | * | * | * | * |
| M Education | 5 | 0.2 | * | * |
| N Health & Social Work | 5 | 0.2 | * | * |
| O Other Community Services, Social and Personal Service Activities | 60 | 2.4 | 550 | 7.6 |
| Total | 2,510 | | 7,195 | |

¹ Figures are based on VAT registered businesses only.
* Figure not shown due to there either being no businesses in the cell or due to confidentiality constraints.

Ballymena

| SIC(92) Section | Businesses ¹ | % of total | Employees | % of total |
|--|-------------------------|------------|---------------|------------|
| A Agriculture, Hunting and Forestry | 925 | 42.0 | 310 | 2.9 |
| B Fishing | * | * | * | * |
| C Mining and Quarrying | 5 | 0.2 | * | * |
| D Manufacturing | 125 | 5.7 | 2,920 | 27.1 |
| E Electricity, Gas and Water Supply | * | * | * | * |
| F Construction | 260 | 11.8 | 1,165 | 10.8 |
| G Wholesale & Retail Trade; Repair of Motor Vehicles, Motorcycles and Personal and Household Goods | 500 | 22.7 | 2,360 | 21.9 |
| H Hotels and Restaurants | 105 | 4.8 | 765 | 7.1 |
| I Transport, Storage and Communication | 65 | 2.9 | 205 | 1.9 |
| J Financial Intermediation | * | * | * | * |
| K Real Estate, Renting and Business Activities | 160 | 7.3 | 2,225 | 20.7 |
| L Public Administration and Defence; Compulsory Social Security | * | * | * | * |
| M Education | * | * | * | * |
| N Health & Social Work | 5 | 0.2 | * | * |
| O Other Community Services, Social and Personal Service Activities | 50 | 2.3 | 630 | 5.8 |
| Total | 2,210 | | 10,770 | |

¹ Figures are based on VAT registered businesses only.
* Figure not shown due to there either being no businesses in the cell or due to confidentiality constraints.

Ballymoney

| SIC(92) Section | Businesses ¹ | % of total | Employees | % of total |
|---|-------------------------|------------|--------------|------------|
| A Agriculture, Hunting and Forestry | 550 | 48.2 | 175 | 4.7 |
| B Fishing | * | * | * | * |
| C Mining and Quarrying | * | * | * | * |
| D Manufacturing | 65 | 5.7 | 1,065 | 28.8 |
| E Electricity, Gas and Water Supply | * | * | * | * |
| F Construction | 150 | 13.2 | 640 | 17.3 |
| G Wholesale & Retail Trade; Repair of Motor Vehicles, Motorcycles and Personal and Household Goods | 225 | 19.7 | 725 | 19.6 |
| H Hotels and Restaurants | 35 | 3.1 | 200 | 5.4 |
| I Transport, Storage and Communication | 40 | 3.5 | 220 | 5.9 |
| J Financial Intermediation | * | * | * | * |
| K Real Estate, Renting and Business Activities | 55 | 4.8 | 395 | 10.7 |
| L Public Administration and Defence; Compulsory Social Security | * | * | * | * |
| M Education | * | * | * | * |
| N Health & Social Work | 5 | 0.4 | * | * |
| O Other Community Services, Social and Personal Service Activities | 15 | 1.3 | * | * |
| Total | 1,145 | | 3,700 | |
| ¹ Figures are based on VAT registered businesses only. | | | | |
| * Figure not shown due to there either being no businesses in the cell or due to confidentiality constraints. | | | | |

Banbridge

| SIC(92) Section | Businesses ¹ | % of total | Employees | % of total |
|---|-------------------------|------------|--------------|------------|
| A Agriculture, Hunting and Forestry | 775 | 45.6 | 215 | 4.4 |
| B Fishing | * | * | * | * |
| C Mining and Quarrying | * | * | * | * |
| D Manufacturing | 95 | 5.6 | 1,165 | 23.8 |
| E Electricity, Gas and Water Supply | * | * | * | * |
| F Construction | 230 | 13.5 | 945 | 19.3 |
| G Wholesale & Retail Trade; Repair of Motor Vehicles, Motorcycles and Personal and Household Goods | 315 | 18.5 | 1,185 | 24.2 |
| H Hotels and Restaurants | 65 | 3.8 | 520 | 10.6 |
| I Transport, Storage and Communication | 70 | 4.1 | 225 | 4.6 |
| J Financial Intermediation | * | * | * | * |
| K Real Estate, Renting and Business Activities | 90 | 5.3 | 325 | 6.6 |
| L Public Administration and Defence; Compulsory Social Security | * | * | * | * |
| M Education | * | * | * | * |
| N Health & Social Work | 10 | 0.6 | * | * |
| O Other Community Services, Social and Personal Service Activities | 45 | 2.6 | 235 | 4.8 |
| Total | 1,705 | | 4,900 | |
| ¹ Figures are based on VAT registered businesses only. | | | | |
| * Figure not shown due to there either being no businesses in the cell or due to confidentiality constraints. | | | | |

Belfast

| SIC(92) Section | Businesses ¹ | % of total | Employees | % of total |
|--|-------------------------|------------|----------------|------------|
| A Agriculture, Hunting and Forestry | 20 | 0.3 | 40 | * |
| B Fishing | * | * | * | * |
| C Mining and Quarrying | 5 | 0.1 | * | * |
| D Manufacturing | 530 | 8.8 | 17,245 | 15.0 |
| E Electricity, Gas and Water Supply | 5 | 0.1 | * | * |
| F Construction | 490 | 8.1 | 3,560 | 3.1 |
| G Wholesale & Retail Trade; Repair of Motor Vehicles, Motorcycles and Personal and Household Goods | 2,050 | 33.9 | 24,890 | 21.7 |
| H Hotels and Restaurants | 450 | 7.4 | 8,070 | 7.0 |
| I Transport, Storage and Communication | 220 | 3.6 | 5,100 | 4.4 |
| J Financial Intermediation | 70 | 1.2 | 7,675 | 6.7 |
| K Real Estate, Renting and Business Activities | 1,650 | 27.3 | 15,690 | 13.7 |
| L Public Administration and Defence; Compulsory Social Security | 10 | 0.2 | * | * |
| M Education | 35 | 0.6 | 4,715 | 4.1 |
| N Health & Social Work | 55 | 0.9 | 2,640 | 2.3 |
| O Other Community Services, Social and Personal Service Activities | 455 | 7.5 | 6,255 | 5.4 |
| Total | 6,075 | | 114,835 | |

¹ Figures are based on VAT registered businesses only.
* Figure not shown due to there either being no businesses in the cell or due to confidentiality constraints.

Carrickfergus

| SIC(92) Section | Businesses ¹ | % of total | Employees | % of total |
|--|-------------------------|------------|--------------|------------|
| A Agriculture, Hunting and Forestry | 70 | 12.8 | 10 | 0.3 |
| B Fishing | * | * | * | * |
| C Mining and Quarrying | * | * | * | * |
| D Manufacturing | 60 | 11.0 | 1,540 | 39.0 |
| E Electricity, Gas and Water Supply | * | * | * | * |
| F Construction | 70 | 12.8 | 265 | 6.7 |
| G Wholesale & Retail Trade; Repair of Motor Vehicles, Motorcycles and Personal and Household Goods | 170 | 31.2 | 660 | 16.7 |
| H Hotels and Restaurants | 40 | 7.3 | 370 | 9.4 |
| I Transport, Storage and Communication | 15 | 2.8 | * | * |
| J Financial Intermediation | * | * | * | * |
| K Real Estate, Renting and Business Activities | 75 | 13.8 | 155 | 3.9 |
| L Public Administration and Defence; Compulsory Social Security | * | * | * | * |
| M Education | 5 | 0.9 | * | * |
| N Health & Social Work | 5 | 0.9 | * | * |
| O Other Community Services, Social and Personal Service Activities | 30 | 5.5 | 310 | 7.9 |
| Total | 545 | | 3,945 | |

¹ Figures are based on VAT registered businesses only.
* Figure not shown due to there either being no businesses in the cell or due to confidentiality constraints.

Castlereaigh

| SIC(92) Section | Businesses ¹ | % of total | Employees | % of total |
|--|-------------------------|------------|--------------|------------|
| A Agriculture, Hunting and Forestry | 95 | 9.5 | 130 | 1.5 |
| B Fishing | * | * | * | * |
| C Mining and Quarrying | * | * | * | * |
| D Manufacturing | 110 | 11.0 | 3,490 | 41.0 |
| E Electricity, Gas and Water Supply | * | * | * | * |
| F Construction | 175 | 17.5 | 975 | 11.5 |
| G Wholesale & Retail Trade; Repair of Motor Vehicles, Motorcycles and Personal and Household Goods | 330 | 33.0 | 1,755 | 20.6 |
| H Hotels and Restaurants | 45 | 4.5 | 430 | 5.0 |
| I Transport, Storage and Communication | 40 | 4.0 | 75 | 0.9 |
| J Financial Intermediation | 5 | 0.5 | * | * |
| K Real Estate, Renting and Business Activities | 130 | 13.0 | 520 | 6.1 |
| L Public Administration and Defence; Compulsory Social Security | * | * | * | * |
| M Education | * | * | * | * |
| N Health & Social Work | 10 | 1.0 | * | * |
| O Other Community Services, Social and Personal Service Activities | 55 | 5.5 | 670 | 7.9 |
| Total | 1,005 | | 8,515 | |

¹ Figures are based on VAT registered businesses only.
* Figure not shown due to there either being no businesses in the cell or due to confidentiality constraints.

Coleraine

| SIC(92) Section | Businesses ¹ | % of total | Employees | % of total |
|--|-------------------------|------------|---------------|------------|
| A Agriculture, Hunting and Forestry | 575 | 33.0 | 230 | 1.6 |
| B Fishing | * | * | * | * |
| C Mining and Quarrying | 5 | 0.3 | * | * |
| D Manufacturing | 115 | 6.6 | 4,610 | 31.5 |
| E Electricity, Gas and Water Supply | * | * | * | * |
| F Construction | 195 | 11.2 | 995 | 6.8 |
| G Wholesale & Retail Trade; Repair of Motor Vehicles, Motorcycles and Personal and Household Goods | 425 | 24.4 | 2,335 | 15.9 |
| H Hotels and Restaurants | 135 | 7.8 | 1,480 | 10.1 |
| I Transport, Storage and Communication | 40 | 2.3 | 210 | 1.4 |
| J Financial Intermediation | 5 | 0.3 | * | * |
| K Real Estate, Renting and Business Activities | 175 | 10.1 | 805 | 5.5 |
| L Public Administration and Defence; Compulsory Social Security | * | * | * | * |
| M Education | 5 | 0.3 | * | * |
| N Health & Social Work | 10 | 0.6 | * | * |
| O Other Community Services, Social and Personal Service Activities | 60 | 3.4 | 830 | 5.7 |
| Total | 1,745 | | 14,645 | |

¹ Figures are based on VAT registered businesses only.
* Figure not shown due to there either being no businesses in the cell or due to confidentiality constraints.

Cookstown

| SIC(92) Section | Businesses ¹ | % of total | Employees | % of total |
|--|-------------------------|------------|--------------|------------|
| A Agriculture, Hunting and Forestry | 875 | 49.0 | 240 | 5.5 |
| B Fishing | 20 | 1.1 | 15 | 0.3 |
| C Mining and Quarrying | 5 | 0.3 | * | * |
| D Manufacturing | 125 | 7.0 | 1,045 | 24.1 |
| E Electricity, Gas and Water Supply | * | * | * | * |
| F Construction | 210 | 11.8 | 655 | 15.1 |
| G Wholesale & Retail Trade; Repair of Motor Vehicles, Motorcycles and Personal and Household Goods | 315 | 17.6 | 1,155 | 26.6 |
| H Hotels and Restaurants | 70 | 3.9 | 575 | 13.2 |
| I Transport, Storage and Communication | 65 | 3.6 | 190 | 4.4 |
| J Financial Intermediation | * | * | * | * |
| K Real Estate, Renting and Business Activities | 70 | 3.9 | 230 | 5.3 |
| L Public Administration and Defence; Compulsory Social Security | * | * | * | * |
| M Education | * | * | * | * |
| N Health & Social Work | 5 | 0.3 | * | * |
| O Other Community Services, Social and Personal Service Activities | 25 | 1.4 | 205 | 4.7 |
| Total | 1,790 | | 4,345 | |

¹ Figures are based on VAT registered businesses only.
* Figure not shown due to there either being no businesses in the cell or due to confidentiality constraints.

Craigavon

| SIC(92) Section | Businesses ¹ | % of total | Employees | % of total |
|--|-------------------------|------------|---------------|------------|
| A Agriculture, Hunting and Forestry | 445 | 21.7 | 235 | 1.3 |
| B Fishing | 5 | 0.2 | * | * |
| C Mining and Quarrying | * | * | * | * |
| D Manufacturing | 225 | 10.9 | 10,255 | 56.3 |
| E Electricity, Gas and Water Supply | * | * | * | * |
| F Construction | 265 | 12.9 | 1,430 | 7.8 |
| G Wholesale & Retail Trade; Repair of Motor Vehicles, Motorcycles and Personal and Household Goods | 590 | 28.7 | 2,990 | 16.4 |
| H Hotels and Restaurants | 110 | 5.4 | 1,025 | 5.6 |
| I Transport, Storage and Communication | 90 | 4.4 | 365 | 2.0 |
| J Financial Intermediation | 5 | 0.2 | * | * |
| K Real Estate, Renting and Business Activities | 210 | 10.2 | 995 | 5.5 |
| L Public Administration and Defence; Compulsory Social Security | * | * | * | * |
| M Education | 5 | 0.2 | * | * |
| N Health & Social Work | 10 | 0.5 | * | * |
| O Other Community Services, Social and Personal Service Activities | 90 | 4.4 | 820 | 4.5 |
| Total | 2,055 | | 18,230 | |

¹ Figures are based on VAT registered businesses only.
* Figure not shown due to there either being no businesses in the cell or due to confidentiality constraints.

Derry

| SIC(92) Section | Businesses ¹ | % of total | Employees | % of total |
|--|-------------------------|------------|---------------|------------|
| A Agriculture, Hunting and Forestry | 370 | 18.7 | 45 | 0.2 |
| B Fishing | * | * | * | * |
| C Mining and Quarrying | * | * | * | * |
| D Manufacturing | 175 | 8.8 | 12,610 | 60.0 |
| E Electricity, Gas and Water Supply | * | * | * | * |
| F Construction | 290 | 14.6 | 1,295 | 6.2 |
| G Wholesale & Retail Trade; Repair of Motor Vehicles, Motorcycles and Personal and Household Goods | 570 | 28.8 | 2,785 | 13.3 |
| H Hotels and Restaurants | 140 | 7.1 | 1,245 | 5.9 |
| I Transport, Storage and Communication | 60 | 3.0 | 215 | 1.0 |
| J Financial Intermediation | 5 | 0.3 | * | * |
| K Real Estate, Renting and Business Activities | 270 | 13.6 | 1,595 | 7.6 |
| L Public Administration and Defence; Compulsory Social Security | * | * | * | * |
| M Education | 5 | 0.3 | * | * |
| N Health & Social Work | 10 | 0.5 | * | * |
| O Other Community Services, Social and Personal Service Activities | 80 | 4.0 | 925 | 4.4 |
| Total | 1,985 | | 21,010 | |

¹ Figures are based on VAT registered businesses only.
* Figure not shown due to there either being no businesses in the cell or due to confidentiality constraints.

Down

| SIC(92) Section | Businesses ¹ | % of total | Employees | % of total |
|--|-------------------------|------------|--------------|------------|
| A Agriculture, Hunting and Forestry | 740 | 33.7 | 260 | 3.7 |
| B Fishing | 25 | 1.1 | 15 | 0.2 |
| C Mining and Quarrying | 5 | 0.2 | * | * |
| D Manufacturing | 120 | 5.5 | 1,225 | 17.6 |
| E Electricity, Gas and Water Supply | * | * | * | * |
| F Construction | 390 | 17.8 | 1,170 | 16.8 |
| G Wholesale & Retail Trade; Repair of Motor Vehicles, Motorcycles and Personal and Household Goods | 480 | 21.9 | 1,925 | 27.7 |
| H Hotels and Restaurants | 150 | 6.8 | 1,110 | 15.9 |
| I Transport, Storage and Communication | 45 | 2.1 | 180 | 2.6 |
| J Financial Intermediation | 5 | 0.2 | * | * |
| K Real Estate, Renting and Business Activities | 155 | 7.1 | 375 | 5.4 |
| L Public Administration and Defence; Compulsory Social Security | * | * | * | * |
| M Education | * | * | * | * |
| N Health & Social Work | 10 | 0.5 | * | * |
| O Other Community Services, Social and Personal Service Activities | 75 | 3.4 | 510 | 7.3 |
| Total | 2,195 | | 6,955 | |

¹ Figures are based on VAT registered businesses only.
* Figure not shown due to there either being no businesses in the cell or due to confidentiality constraints.

Dungannon

| SIC(92) Section | Businesses ¹ | % of total | Employees | % of total |
|--|-------------------------|------------|--------------|------------|
| A Agriculture, Hunting and Forestry | 1,275 | 49.1 | 415 | 4.6 |
| B Fishing | * | * | * | * |
| C Mining and Quarrying | 5 | 0.2 | * | * |
| D Manufacturing | 230 | 8.9 | 3,430 | 38.2 |
| E Electricity, Gas and Water Supply | * | * | * | * |
| F Construction | 250 | 9.6 | 645 | 7.2 |
| G Wholesale & Retail Trade; Repair of Motor Vehicles, Motorcycles and Personal and Household Goods | 465 | 17.9 | 2,420 | 26.9 |
| H Hotels and Restaurants | 100 | 3.9 | 540 | 6.0 |
| I Transport, Storage and Communication | 80 | 3.1 | 235 | 2.6 |
| J Financial Intermediation | 5 | 0.2 | * | * |
| K Real Estate, Renting and Business Activities | 130 | 5.0 | 520 | 5.8 |
| L Public Administration and Defence; Compulsory Social Security | * | * | * | * |
| M Education | 5 | 0.2 | * | * |
| N Health & Social Work | 15 | 0.6 | * | * |
| O Other Community Services, Social and Personal Service Activities | 40 | 1.5 | 105 | 1.2 |
| Total | 2,595 | | 8,980 | |

¹ Figures are based on VAT registered businesses only.
* Figure not shown due to there either being no businesses in the cell or due to confidentiality constraints.

Fermanagh

| SIC(92) Section | Businesses ¹ | % of total | Employees | % of total |
|--|-------------------------|------------|--------------|------------|
| A Agriculture, Hunting and Forestry | 1,865 | 58.6 | 210 | 2.5 |
| B Fishing | * | * | * | * |
| C Mining and Quarrying | 5 | 0.2 | * | * |
| D Manufacturing | 125 | 3.9 | 2,735 | 32.2 |
| E Electricity, Gas and Water Supply | * | * | * | * |
| F Construction | 240 | 7.5 | 795 | 9.4 |
| G Wholesale & Retail Trade; Repair of Motor Vehicles, Motorcycles and Personal and Household Goods | 555 | 17.5 | 1,920 | 22.6 |
| H Hotels and Restaurants | 125 | 3.9 | 1,025 | 12.1 |
| I Transport, Storage and Communication | 60 | 1.9 | 225 | 2.6 |
| J Financial Intermediation | 5 | 0.2 | * | * |
| K Real Estate, Renting and Business Activities | 110 | 3.5 | 360 | 4.2 |
| L Public Administration and Defence; Compulsory Social Security | * | * | * | * |
| M Education | 5 | 0.2 | * | * |
| N Health & Social Work | 20 | 0.6 | 515 | 6.1 |
| O Other Community Services, Social and Personal Service Activities | 65 | 2.0 | 490 | 5.8 |
| Total | 3,180 | | 8,500 | |

¹ Figures are based on VAT registered businesses only.
* Figure not shown due to there either being no businesses in the cell or due to confidentiality constraints.

Larne

| SIC(92) Section | Businesses ¹ | % of total | Employees | % of total |
|--|-------------------------|------------|--------------|------------|
| A Agriculture, Hunting and Forestry | 375 | 39.1 | 65 | 1.4 |
| B Fishing | 5 | 0.5 | * | * |
| C Mining and Quarrying | * | * | * | * |
| D Manufacturing | 45 | 4.7 | 1,820 | 38.4 |
| E Electricity, Gas and Water Supply | * | * | * | * |
| F Construction | 95 | 9.9 | 190 | 4.0 |
| G Wholesale & Retail Trade; Repair of Motor Vehicles, Motorcycles and Personal and Household Goods | 210 | 21.9 | 930 | 19.6 |
| H Hotels and Restaurants | 60 | 6.3 | 525 | 11.1 |
| I Transport, Storage and Communication | 55 | 5.7 | 230 | 4.9 |
| J Financial Intermediation | 5 | 0.5 | * | * |
| K Real Estate, Renting and Business Activities | 65 | 6.8 | 165 | 3.5 |
| L Public Administration and Defence; Compulsory Social Security | * | * | * | * |
| M Education | * | * | * | * |
| N Health & Social Work | * | * | * | * |
| O Other Community Services, Social and Personal Service Activities | 40 | 4.2 | 350 | 7.4 |
| Total | 960 | | 4,735 | |

¹ Figures are based on VAT registered businesses only.
* Figure not shown due to there either being no businesses in the cell or due to confidentiality constraints.

Limavady

| SIC(92) Section | Businesses ¹ | % of total | Employees | % of total |
|--|-------------------------|------------|--------------|------------|
| A Agriculture, Hunting and Forestry | 420 | 42.2 | 140 | 3.6 |
| B Fishing | * | * | * | * |
| C Mining and Quarrying | * | * | * | * |
| D Manufacturing | 55 | 5.5 | 1,390 | 35.5 |
| E Electricity, Gas and Water Supply | * | * | * | * |
| F Construction | 180 | 18.1 | 645 | 16.5 |
| G Wholesale & Retail Trade; Repair of Motor Vehicles, Motorcycles and Personal and Household Goods | 185 | 18.6 | 870 | 22.2 |
| H Hotels and Restaurants | 60 | 6.0 | 550 | 14.0 |
| I Transport, Storage and Communication | 20 | 2.0 | 40 | 1.0 |
| J Financial Intermediation | * | * | * | * |
| K Real Estate, Renting and Business Activities | 45 | 4.5 | 115 | 2.9 |
| L Public Administration and Defence; Compulsory Social Security | * | * | * | * |
| M Education | 5 | 0.5 | * | * |
| N Health & Social Work | 5 | 0.5 | * | * |
| O Other Community Services, Social and Personal Service Activities | 20 | 2.0 | 60 | 1.5 |
| Total | 995 | | 3,920 | |

¹ Figures are based on VAT registered businesses only.
* Figure not shown due to there either being no businesses in the cell or due to confidentiality constraints.

Lisburn

| SIC(92) Section | Businesses ¹ | % of total | Employees | % of total |
|---|-------------------------|------------|---------------|------------|
| A Agriculture, Hunting and Forestry | 620 | 21.8 | 310 | 1.8 |
| B Fishing | * | * | * | * |
| C Mining and Quarrying | 5 | 0.2 | * | * |
| D Manufacturing | 280 | 9.8 | 5,365 | 30.5 |
| E Electricity, Gas and Water Supply | * | * | * | * |
| F Construction | 450 | 15.8 | 1,870 | 10.6 |
| G Wholesale & Retail Trade; Repair of Motor Vehicles, Motorcycles and Personal and Household Goods | 760 | 26.7 | 5,275 | 30.0 |
| H Hotels and Restaurants | 125 | 4.4 | 1,515 | 8.6 |
| I Transport, Storage and Communication | 135 | 4.7 | 370 | 2.1 |
| J Financial Intermediation | 10 | 0.4 | * | * |
| K Real Estate, Renting and Business Activities | 300 | 10.5 | 1,625 | 9.2 |
| L Public Administration and Defence; Compulsory Social Security | * | * | * | * |
| M Education | 5 | 0.2 | * | * |
| N Health & Social Work | 15 | 0.5 | * | * |
| O Other Community Services, Social and Personal Service Activities | 145 | 5.1 | 935 | 5.3 |
| Total | 2,850 | | 17,590 | |
| ¹ Figures are based on VAT registered businesses only. | | | | |
| * Figure not shown due to there either being no businesses in the cell or due to confidentiality constraints. | | | | |

Magherafelt

| SIC(92) Section | Businesses ¹ | % of total | Employees | % of total |
|---|-------------------------|------------|--------------|------------|
| A Agriculture, Hunting and Forestry | 790 | 42.8 | 155 | 2.5 |
| B Fishing | * | * | * | * |
| C Mining and Quarrying | 5 | 0.3 | * | * |
| D Manufacturing | 150 | 8.1 | 2,345 | 37.3 |
| E Electricity, Gas and Water Supply | * | * | * | * |
| F Construction | 325 | 17.6 | 1,455 | 23.2 |
| G Wholesale & Retail Trade; Repair of Motor Vehicles, Motorcycles and Personal and Household Goods | 295 | 16.0 | 1,265 | 20.1 |
| H Hotels and Restaurants | 70 | 3.8 | 210 | 3.3 |
| I Transport, Storage and Communication | 80 | 4.3 | 135 | 2.1 |
| J Financial Intermediation | 5 | 0.3 | * | * |
| K Real Estate, Renting and Business Activities | 95 | 5.1 | 185 | 2.9 |
| L Public Administration and Defence; Compulsory Social Security | * | * | * | * |
| M Education | 5 | 0.3 | * | * |
| N Health & Social Work | 10 | 0.5 | * | * |
| O Other Community Services, Social and Personal Service Activities | 20 | 1.1 | 225 | 3.6 |
| Total | 1,845 | | 6,280 | |
| ¹ Figures are based on VAT registered businesses only. | | | | |
| * Figure not shown due to there either being no businesses in the cell or due to confidentiality constraints. | | | | |

Moyle

| SIC(92) Section | Businesses ¹ | % of total | Employees | % of total |
|--|-------------------------|------------|--------------|------------|
| A Agriculture, Hunting and Forestry | 385 | 53.5 | 55 | 3.9 |
| B Fishing | 5 | 0.7 | * | * |
| C Mining and Quarrying | * | * | * | * |
| D Manufacturing | 25 | 3.5 | 215 | 15.2 |
| E Electricity, Gas and Water Supply | * | * | * | * |
| F Construction | 80 | 11.1 | 170 | 12.0 |
| G Wholesale & Retail Trade; Repair of Motor Vehicles, Motorcycles and Personal and Household Goods | 130 | 18.1 | 490 | 34.6 |
| H Hotels and Restaurants | 45 | 6.3 | 285 | 20.1 |
| I Transport, Storage and Communication | 15 | 2.1 | * | * |
| J Financial Intermediation | * | * | * | * |
| K Real Estate, Renting and Business Activities | 20 | 2.8 | 40 | 2.8 |
| L Public Administration and Defence; Compulsory Social Security | * | * | * | * |
| M Education | * | * | * | * |
| N Health & Social Work | 5 | 0.7 | * | * |
| O Other Community Services, Social and Personal Service Activities | 10 | 1.4 | * | * |
| Total | 715 | | 1,415 | |

¹ Figures are based on VAT registered businesses only.
* Figure not shown due to there either being no businesses in the cell or due to confidentiality constraints.

Newry and Mourne

| SIC(92) Section | Businesses ¹ | % of total | Employees | % of total |
|--|-------------------------|------------|---------------|------------|
| A Agriculture, Hunting and Forestry | 1,070 | 34.0 | 225 | 1.3 |
| B Fishing | 80 | 2.5 | 50 | 0.3 |
| C Mining and Quarrying | 15 | 0.5 | * | * |
| D Manufacturing | 235 | 7.5 | 5,840 | 33.5 |
| E Electricity, Gas and Water Supply | * | * | * | * |
| F Construction | 435 | 13.8 | 1,940 | 11.1 |
| G Wholesale & Retail Trade; Repair of Motor Vehicles, Motorcycles and Personal and Household Goods | 670 | 21.3 | 5,970 | 34.2 |
| H Hotels and Restaurants | 155 | 4.9 | 860 | 4.9 |
| I Transport, Storage and Communication | 180 | 5.7 | 620 | 3.6 |
| J Financial Intermediation | 10 | 0.3 | * | * |
| K Real Estate, Renting and Business Activities | 180 | 5.7 | 665 | 3.8 |
| L Public Administration and Defence; Compulsory Social Security | * | * | * | * |
| M Education | 5 | 0.2 | * | * |
| N Health & Social Work | 15 | 0.5 | * | * |
| O Other Community Services, Social and Personal Service Activities | 95 | 3.0 | 940 | 5.4 |
| Total | 3,155 | | 17,440 | |

¹ Figures are based on VAT registered businesses only.
* Figure not shown due to there either being no businesses in the cell or due to confidentiality constraints.

Newtownabbey

| SIC(92) Section | Businesses ¹ | % of total | Employees | % of total |
|--|-------------------------|------------|---------------|------------|
| A Agriculture, Hunting and Forestry | 170 | 11.1 | 200 | 1.5 |
| B Fishing | * | * | * | * |
| C Mining and Quarrying | * | * | * | * |
| D Manufacturing | 155 | 10.2 | 3,255 | 24.0 |
| E Electricity, Gas and Water Supply | * | * | * | * |
| F Construction | 210 | 13.8 | 1,425 | 10.5 |
| G Wholesale & Retail Trade; Repair of Motor Vehicles, Motorcycles and Personal and Household Goods | 515 | 33.8 | 4,085 | 30.1 |
| H Hotels and Restaurants | 80 | 5.2 | 865 | 6.4 |
| I Transport, Storage and Communication | 100 | 6.6 | 1,055 | 7.8 |
| J Financial Intermediation | 5 | 0.3 | * | * |
| K Real Estate, Renting and Business Activities | 205 | 13.4 | 815 | 6.0 |
| L Public Administration and Defence; Compulsory Social Security | * | * | * | * |
| M Education | 5 | 0.3 | * | * |
| N Health & Social Work | 10 | 0.7 | * | * |
| O Other Community Services, Social and Personal Service Activities | 75 | 4.9 | 500 | 3.7 |
| Total | 1,530 | | 13,575 | |

¹ Figures are based on VAT registered businesses only.
* Figure not shown due to there either being no businesses in the cell or due to confidentiality constraints.

North Down

| SIC(92) Section | Businesses ¹ | % of total | Employees | % of total |
|--|-------------------------|------------|--------------|------------|
| A Agriculture, Hunting and Forestry | 65 | 4.6 | 45 | 0.5 |
| B Fishing | 5 | 0.4 | * | * |
| C Mining and Quarrying | * | * | * | * |
| D Manufacturing | 125 | 8.9 | 1,930 | 21.3 |
| E Electricity, Gas and Water Supply | * | * | * | * |
| F Construction | 155 | 11.0 | 585 | 6.5 |
| G Wholesale & Retail Trade; Repair of Motor Vehicles, Motorcycles and Personal and Household Goods | 430 | 30.6 | 1,810 | 20.0 |
| H Hotels and Restaurants | 115 | 8.2 | 1,715 | 18.9 |
| I Transport, Storage and Communication | 35 | 2.5 | 115 | 1.3 |
| J Financial Intermediation | 5 | 0.4 | * | * |
| K Real Estate, Renting and Business Activities | 325 | 23.1 | 865 | 9.5 |
| L Public Administration and Defence; Compulsory Social Security | * | * | * | * |
| M Education | 10 | 0.7 | * | * |
| N Health & Social Work | 10 | 0.7 | * | * |
| O Other Community Services, Social and Personal Service Activities | 120 | 8.5 | 720 | 7.9 |
| Total | 1,405 | | 9,065 | |

¹ Figures are based on VAT registered businesses only.
* Figure not shown due to there either being no businesses in the cell or due to confidentiality constraints.

Omagh

| SIC(92) Section | Businesses ¹ | % of total | Employees | % of total |
|--|-------------------------|------------|--------------|------------|
| A Agriculture, Hunting and Forestry | 1,455 | 57.2 | 260 | 4.9 |
| B Fishing | * | * | * | * |
| C Mining and Quarrying | 10 | 0.4 | * | * |
| D Manufacturing | 105 | 4.1 | 1,110 | 20.9 |
| E Electricity, Gas and Water Supply | * | * | * | * |
| F Construction | 280 | 11.0 | 810 | 15.3 |
| G Wholesale & Retail Trade; Repair of Motor Vehicles, Motorcycles and Personal and Household Goods | 400 | 15.7 | 1,225 | 23.1 |
| H Hotels and Restaurants | 75 | 2.9 | 515 | 9.7 |
| I Transport, Storage and Communication | 35 | 1.4 | 95 | 1.8 |
| J Financial Intermediation | 5 | 0.2 | * | * |
| K Real Estate, Renting and Business Activities | 130 | 5.1 | 465 | 8.8 |
| L Public Administration and Defence; Compulsory Social Security | * | * | * | * |
| M Education | 5 | 0.2 | * | * |
| N Health & Social Work | 10 | 0.4 | * | * |
| O Other Community Services, Social and Personal Service Activities | 35 | 1.4 | 525 | 9.9 |
| Total | 2,545 | | 5,305 | |

¹ Figures are based on VAT registered businesses only.
* Figure not shown due to there either being no businesses in the cell or due to confidentiality constraints.

Strabane

| SIC(92) Section | Businesses ¹ | % of total | Employees | % of total |
|--|-------------------------|------------|--------------|------------|
| A Agriculture, Hunting and Forestry | 820 | 53.6 | 205 | 3.3 |
| B Fishing | * | * | * | * |
| C Mining and Quarrying | 5 | 0.3 | * | * |
| D Manufacturing | 80 | 5.2 | 3,750 | 59.7 |
| E Electricity, Gas and Water Supply | * | * | * | * |
| F Construction | 160 | 10.5 | 670 | 10.7 |
| G Wholesale & Retail Trade; Repair of Motor Vehicles, Motorcycles and Personal and Household Goods | 285 | 18.6 | 870 | 13.9 |
| H Hotels and Restaurants | 65 | 4.2 | 225 | 3.6 |
| I Transport, Storage and Communication | 35 | 2.3 | 80 | 1.3 |
| J Financial Intermediation | * | * | * | * |
| K Real Estate, Renting and Business Activities | 50 | 3.3 | 145 | 2.3 |
| L Public Administration and Defence; Compulsory Social Security | * | * | * | * |
| M Education | * | * | * | * |
| N Health & Social Work | 5 | 0.3 | * | * |
| O Other Community Services, Social and Personal Service Activities | 30 | 2.0 | 70 | 1.1 |
| Total | 1,535 | | 6,280 | |

¹ Figures are based on VAT registered businesses only.
* Figure not shown due to there either being no businesses in the cell or due to confidentiality constraints.

UNITED KINGDOM AND REGIONAL COMPARISONS

Northern Ireland's reliance on the agricultural industry is evident in Table 10. Proportionately, there are almost four times as many agricultural businesses in Northern Ireland than in Great Britain. The greater diversity in Great Britain's economy is also evident, with its higher proportion of businesses in service sector industries such as hotels and catering and property and business services.

Table 10 Number of VAT-based businesses by industrial classification, 1999

| Industrial Classification | Northern Ireland | % | Great Britain | % | United Kingdom | % |
|---|-----------------------------|------------|--------------------------|------------|---------------------------|------------|
| Agriculture | 17,310 | 33.3 | 130,500 | 8.5 | 147,810 | 9.3 |
| Production | 3,920 | 7.5 | 152,180 | 9.9 | 156,100 | 9.8 |
| <i>Of which, Mining/quarrying & utilities</i> | <i>110</i> | <i>0.2</i> | <i>1,420</i> | <i>0.1</i> | <i>1,530</i> | <i>0.1</i> |
| <i>Of which, manufacturing</i> | <i>3,810</i> | <i>7.3</i> | <i>150,760</i> | <i>9.8</i> | <i>154,570</i> | <i>9.7</i> |
| Construction | 6,270 | 12.1 | 163,195 | 10.6 | 169,465 | 10.6 |
| Motor Trades | 2,340 | 4.5 | 66,305 | 4.3 | 68,645 | 4.3 |
| Wholesale | 3,300 | 6.4 | 109,755 | 7.1 | 113,055 | 7.1 |
| Retail | 6,625 | 12.7 | 196,195 | 12.7 | 202,820 | 12.7 |
| Hotels & Catering | 2,730 | 5.3 | 101,395 | 6.6 | 104,125 | 6.5 |
| Transport | 1,750 | 3.4 | 60,025 | 3.9 | 61,775 | 3.9 |
| Post & Telecommunications | 155 | 0.3 | 10,265 | 0.7 | 10,420 | 0.7 |
| Finance | 165 | 0.3 | 11,985 | 0.8 | 12,150 | 0.8 |
| Property & Business Services | 5,130 | 9.9 | 389,590 | 25.2 | 394,720 | 24.7 |
| Education | 115 | 0.2 | 7,900 | 0.5 | 8,015 | 0.5 |
| Health | 265 | 0.5 | 8,625 | 0.6 | 8,890 | 0.6 |
| Public Administration & Other Services | 1,885 | 3.6 | 135,830 | 8.8 | 137,715 | 8.6 |
| Total | 51,965 | | 1,543,740 | | 1,595,705 | |

Source: Size Analysis of United Kingdom Businesses (Business Monitor PA 1003), 1999

Table 11 shows the numbers of VAT-based businesses in the standard statistical regions of the United Kingdom. Agricultural businesses play an important role in the local economies of Scotland, Wales and the North and South West regions of England. The vast majority of businesses in the South East region of England (and Greater London in particular) are involved in property and business services.

Table 11 Number and percentage of VAT-based businesses by industrial classification and UK region, 1999

| Number | North | North West | Yorks & Humber | East Midlands | West Midlands | East Anglia | Greater London | Rest of South East | South West | Wales | Scotland |
|---|---------------|----------------|----------------|----------------|----------------|---------------|----------------|--------------------|----------------|---------------|----------------|
| Industrial Classification | | | | | | | | | | | |
| Agriculture | 8,150 | 6,590 | 11,015 | 10,910 | 11,640 | 8,615 | 690 | 14,755 | 22,105 | 16,825 | 19,200 |
| Production | 4,970 | 15,215 | 12,965 | 14,220 | 18,840 | 6,315 | 20,130 | 32,085 | 12,950 | 5,600 | 8,890 |
| <i>Of which, Mining/quarrying & utilities</i> | 80 | 70 | 115 | 120 | 90 | 60 | 175 | 210 | 160 | 90 | 250 |
| <i>Of which, manufacturing</i> | 4,890 | 15,145 | 12,850 | 14,100 | 18,750 | 6,250 | 19,955 | 31,875 | 12,790 | 5,510 | 8,640 |
| Construction | 5,765 | 14,065 | 12,390 | 12,155 | 14,735 | 7,640 | 16,635 | 42,635 | 17,120 | 8,000 | 12,045 |
| Motor Trades | 2,640 | 6,770 | 5,755 | 5,350 | 6,415 | 3,140 | 6,365 | 14,735 | 7,150 | 3,520 | 4,465 |
| Wholesale | 2,815 | 12,040 | 8,460 | 8,330 | 10,430 | 4,180 | 21,380 | 24,080 | 8,690 | 3,635 | 5,715 |
| Retail | 9,230 | 22,475 | 17,890 | 14,340 | 17,750 | 7,240 | 27,895 | 35,245 | 18,010 | 9,835 | 16,290 |
| Hotels & Catering | 5,255 | 9,710 | 8,345 | 6,980 | 8,095 | 4,060 | 13,555 | 17,935 | 11,025 | 6,320 | 10,120 |
| Transport | 2,670 | 6,005 | 5,625 | 4,930 | 5,280 | 2,795 | 8,120 | 12,390 | 4,980 | 2,920 | 4,310 |
| Post & Telecommunications | 245 | 885 | 635 | 740 | 1,025 | 420 | 2,100 | 2,805 | 720 | 265 | 420 |
| Finance | 150 | 905 | 475 | 485 | 685 | 370 | 5,305 | 2,155 | 645 | 200 | 605 |
| Property & Business Services | 9,265 | 33,530 | 21,335 | 21,090 | 27,305 | 13,630 | 93,770 | 106,070 | 31,370 | 9,965 | 22,260 |
| Education | 280 | 655 | 560 | 550 | 720 | 330 | 1,275 | 1,935 | 730 | 295 | 575 |
| Health | 315 | 735 | 610 | 570 | 690 | 390 | 1,470 | 1,880 | 965 | 400 | 600 |
| Public Administration & Other Services | 4,455 | 10,320 | 8,610 | 7,670 | 9,385 | 4,800 | 32,475 | 31,755 | 11,310 | 4,455 | 10,590 |
| Total | 56,215 | 139,900 | 114,670 | 108,310 | 133,000 | 63,930 | 251,170 | 340,455 | 147,765 | 72,240 | 116,085 |

Source: Size Analysis of United Kingdom Businesses (Business Monitor PA 1003), 1999

| Percentage | North | North West | Yorks & Humber | East Midlands | West Midlands | East Anglia | Greater London | Rest of South East | South West | Wales | Scotland |
|---|-------|------------|----------------|---------------|---------------|-------------|----------------|--------------------|------------|-------|----------|
| Industrial Classification | | | | | | | | | | | |
| Agriculture | 14.5 | 4.7 | 9.6 | 10.1 | 8.8 | 13.5 | 0.3 | 4.3 | 15.0 | 23.3 | 16.5 |
| Production | 8.8 | 10.9 | 11.3 | 13.1 | 14.2 | 9.9 | 8.0 | 9.4 | 8.8 | 7.8 | 7.7 |
| <i>Of which, Mining/quarrying & utilities</i> | 0.1 | 0.1 | 0.1 | 0.1 | 0.1 | 0.1 | 0.1 | 0.1 | 0.1 | 0.1 | 0.2 |
| <i>Of which, manufacturing</i> | 8.7 | 10.8 | 11.2 | 13.0 | 14.1 | 9.8 | 7.9 | 9.4 | 8.7 | 7.6 | 7.4 |
| Construction | 10.3 | 10.1 | 10.8 | 11.2 | 11.1 | 12.0 | 6.6 | 12.5 | 11.6 | 11.1 | 10.4 |
| Motor Trades | 4.7 | 4.8 | 5.0 | 4.9 | 4.8 | 4.9 | 2.5 | 4.3 | 4.8 | 4.9 | 3.8 |
| Wholesale | 5.0 | 8.6 | 7.4 | 7.7 | 7.8 | 6.5 | 8.5 | 7.1 | 5.9 | 5.0 | 4.9 |
| Retail | 16.4 | 16.1 | 15.6 | 13.2 | 13.3 | 11.3 | 11.1 | 10.4 | 12.2 | 13.6 | 14.0 |
| Hotels & Catering | 9.3 | 6.9 | 7.3 | 6.4 | 6.1 | 6.4 | 5.4 | 5.3 | 7.5 | 8.7 | 8.7 |
| Transport | 4.7 | 4.3 | 4.9 | 4.6 | 4.0 | 4.4 | 3.2 | 3.6 | 3.4 | 4.0 | 3.7 |
| Post & Telecommunications | 0.4 | 0.6 | 0.6 | 0.7 | 0.8 | 0.7 | 0.8 | 0.8 | 0.5 | 0.4 | 0.4 |
| Finance | 0.3 | 0.6 | 0.4 | 0.4 | 0.5 | 0.6 | 2.1 | 0.6 | 0.4 | 0.3 | 0.5 |
| Property & Business Services | 16.5 | 24.0 | 18.6 | 19.5 | 20.5 | 21.3 | 37.3 | 31.2 | 21.2 | 13.8 | 19.2 |
| Education | 0.5 | 0.5 | 0.5 | 0.5 | 0.5 | 0.5 | 0.5 | 0.6 | 0.5 | 0.4 | 0.5 |
| Health | 0.6 | 0.5 | 0.5 | 0.5 | 0.5 | 0.6 | 0.6 | 0.6 | 0.7 | 0.6 | 0.5 |
| Public Administration & Other Services | 7.9 | 7.4 | 7.5 | 7.1 | 7.1 | 7.5 | 12.9 | 9.3 | 7.7 | 6.2 | 9.1 |

COMPARISONS WITH REPUBLIC OF IRELAND

The Central Statistics Office (CSO) in the Republic of Ireland is developing a business register similar to the IDBR, under the European Union regulation 2186/93 on harmonisation of business registers for statistical purposes.

Table 12 shows figures from this developing register. Care should be taken when comparing these figures with those in Table 4 of this booklet, as explained in the following notes.

Notes:

1. Article 3 of Council Regulation 2186/93 allows member states to optionally collect data on those enterprises whose main activity falls within Public Administration and Defence. The CSO does not collect data from the Government sector which includes enterprises within the transport, financial intermediation, public administration, education and health sections. Consequently, the number of enterprises and the number of employees are understated in these particular sections.
2. Data for the production industries are taken from the Census of Industrial Production 1997. Data for all other sections are from the Business Register at 31 December 1998. No figures are available for the agriculture and fishing sections.
3. Data are taken from a developing Register and may underestimate some sectors of the economy.

Table 12 Figures from the Republic of Ireland business register

| Industrial classification | Enterprises | % of total | Employees | % of total |
|--|--------------------|-------------------|------------------|-------------------|
| Mining and Quarrying | 60 | 0.0 | 5,595 | 0.6 |
| Manufacturing | 4,445 | 3.6 | 239,345 | 24.2 |
| Electricity, Gas and Water Supply | 10 | 0.0 | 10,100 | 1.0 |
| Construction | 11,030 | 8.8 | 71,215 | 7.2 |
| Wholesale and Retail Trade | 41,900 | 33.5 | 236,630 | 24.0 |
| Hotels and Restaurants | 20,890 | 16.7 | 128,515 | 13.0 |
| Transport, Storage and Communication | 5,895 | 4.7 | 34,380 | 3.5 |
| Financial Intermediation | 1,920 | 1.5 | 18,215 | 1.8 |
| Real Estate, Renting and Business Activities | 21,635 | 17.3 | 129,750 | 13.1 |
| Public Administration and Defence | 45 | 0.0 | 590 | 0.1 |
| Education | 750 | 0.6 | 5,000 | 0.5 |
| Health | 4,570 | 3.6 | 24,675 | 2.5 |
| Other Services | 12,050 | 9.6 | 83,330 | 8.4 |
| Total | 125,195 | | 987,330 | |

Source: Central Statistics Office, Republic of Ireland

VAT REGISTRATIONS AND DE-REGISTRATIONS

The Department of Trade and Industry's SME Statistics Unit publish statistics on VAT registrations and de-registrations for UK regions annually, having taken the information from the IDBR. The statistics are the best official guide to the pattern of business start-ups and closures. Coverage includes both companies and self-employed run businesses but excludes those businesses that operate below the VAT threshold – for example, most of the very smallest one-person businesses.

Table 13 shows the number of businesses that registered and de-registered for VAT throughout the United Kingdom for the period 1994-1998. These figures are an indicator of the level of entrepreneurship and of the health of the business population. Many factors influence the pattern of business start-ups. Among the most important are economic growth (encouraging new ventures and creating demand for business and personal services), the level of industrial restructuring and contracting out, and the stock of people with management or small business experience. Businesses de-registering from VAT do so due to closure, or (in a minority of cases) because turnover has fallen below the registration threshold. Closure does not necessarily involve bankruptcy or insolvency proceedings, which make up only around one in four closures throughout the UK.

Table 13 VAT registrations and de-registrations by UK region, 1994-1998

| Region | 1994 | | 1995 | | 1996 | | 1997 | | 1998 | |
|-----------------------|----------------|----------------|----------------|----------------|----------------|----------------|----------------|----------------|----------------|----------------|
| | Reg. | De-reg. | Reg. | De-reg. | Reg. | De-reg. | Reg. | De-reg. | Reg. | De-reg. |
| North East | 4,455 | 5,150 | 4,085 | 5,055 | 4,085 | 4,505 | 4,170 | 4,390 | 4,215 | 4,035 |
| North West | 16,470 | 19,490 | 15,915 | 18,435 | 16,475 | 17,245 | 18,120 | 17,120 | 18,595 | 16,115 |
| North West (GOR) | 13,950 | 16,665 | 13,480 | 15,535 | 13,695 | 14,430 | 14,880 | 14,515 | 15,190 | 13,810 |
| Merseyside | 2,520 | 2,825 | 2,435 | 2,900 | 2,780 | 2,815 | 3,240 | 2,605 | 3,405 | 2,305 |
| Yorks & The Humber | 11,620 | 13,565 | 11,095 | 13,210 | 11,315 | 12,000 | 11,825 | 12,250 | 11,820 | 11,350 |
| East Midlands | 10,860 | 11,905 | 10,695 | 11,445 | 10,845 | 11,365 | 11,745 | 11,235 | 11,895 | 10,695 |
| West Midlands | 13,665 | 15,215 | 13,290 | 14,670 | 13,295 | 13,670 | 13,635 | 13,885 | 15,030 | 13,335 |
| Eastern | 16,070 | 18,115 | 16,010 | 16,530 | 16,140 | 15,600 | 18,270 | 15,750 | 17,920 | 15,200 |
| London | 32,530 | 33,240 | 32,650 | 29,055 | 34,055 | 29,320 | 37,165 | 28,295 | 39,670 | 28,375 |
| South East (GOR) | 27,360 | 29,680 | 26,470 | 27,085 | 27,055 | 25,680 | 29,955 | 25,665 | 29,915 | 22,985 |
| South West | 14,155 | 16,960 | 12,955 | 15,465 | 13,840 | 14,315 | 15,315 | 14,400 | 15,545 | 13,845 |
| England | 147,190 | 163,325 | 143,165 | 150,965 | 147,105 | 143,705 | 160,200 | 142,990 | 164,605 | 135,935 |
| Wales | 6,280 | 8,545 | 5,985 | 7,125 | 6,105 | 6,750 | 6,240 | 6,320 | 6,135 | 6,240 |
| Scotland | 11,345 | 12,560 | 11,195 | 12,020 | 11,275 | 11,535 | 12,280 | 11,540 | 11,825 | 10,930 |
| Northern Ireland | 3,425 | 3,710 | 3,615 | 3,120 | 3,715 | 3,080 | 3,850 | 3,605 | 3,685 | 2,825 |
| United Kingdom | 168,240 | 188,140 | 163,960 | 173,230 | 168,200 | 165,065 | 182,570 | 164,455 | 186,250 | 155,930 |

Source: DTI SME Statistics Unit

Northern Ireland is one of only four regions throughout the United Kingdom that has seen an increase in the number of businesses registered for VAT during the period 1994-1998 (Table 14 and Figure 5).

Table 14 Business stock: VAT registered enterprises by UK region, 1994-1998

| Region | 1994 | | 1995 | | 1996 | | 1997 | | 1998 | |
|-----------------------|------------------|----------------|------------------|---------------|------------------|--------------|------------------|---------------|------------------|---------------|
| | Stock | Net change | Stock | Net change | Stock | Net change | Stock | Net change | Stock | Net change |
| North East | 44,120 | -695 | 43,425 | -970 | 42,455 | -420 | 42,035 | -220 | 41,815 | 180 |
| North West | 162,900 | -3,025 | 159,875 | -2,520 | 157,355 | -770 | 156,585 | 995 | 157,580 | 2,480 |
| North West (GOR) | 140,245 | -2,715 | 137,530 | -2,055 | 135,475 | -735 | 134,740 | 360 | 135,100 | 1,380 |
| Merseyside | 22,655 | -310 | 22,345 | -465 | 21,880 | -35 | 21,845 | 635 | 22,480 | 1,100 |
| Yorks & The Humber | 122,410 | -1,950 | 120,460 | -2,110 | 118,350 | -685 | 117,665 | -425 | 117,240 | 470 |
| East Midlands | 111,795 | -1,040 | 110,755 | -750 | 110,005 | -520 | 109,485 | 510 | 109,995 | 1,200 |
| West Midlands | 138,145 | -1,550 | 136,595 | -1,380 | 135,215 | -375 | 134,840 | -245 | 134,595 | 1,695 |
| Eastern | 159,490 | -2,040 | 157,450 | -520 | 156,930 | 540 | 157,470 | 2,525 | 159,995 | 2,720 |
| London | 242,175 | -710 | 241,465 | 3,590 | 245,055 | 4,735 | 249,790 | 8,870 | 258,660 | 11,295 |
| South East (GOR) | 243,370 | -2,315 | 241,055 | -615 | 240,440 | 1,375 | 241,815 | 4,300 | 246,115 | 6,930 |
| South West | 152,870 | -2,805 | 150,065 | -2,505 | 147,560 | -475 | 147,085 | 930 | 148,015 | 1,700 |
| England | 1,377,275 | -16,130 | 1,361,145 | -7,780 | 1,353,365 | 3,405 | 1,356,770 | 17,240 | 1,374,010 | 28,670 |
| Wales | 79,465 | -2,265 | 77,200 | -1,140 | 76,060 | -645 | 75,415 | -80 | 75,335 | -105 |
| Scotland | 119,825 | -1,215 | 118,610 | -825 | 117,785 | -260 | 117,525 | 740 | 118,265 | 895 |
| Northern Ireland | 52,665 | -285 | 52,380 | 495 | 52,875 | 635 | 53,510 | 245 | 53,755 | 860 |
| United Kingdom | 1,629,230 | -19,895 | 1,609,335 | -9,250 | 1,600,085 | 3,135 | 1,603,220 | 18,145 | 1,621,365 | 30,320 |

Source: DTI SME Statistics Unit

Figure 5 Change (%) in business stock by UK region, 1994-1998

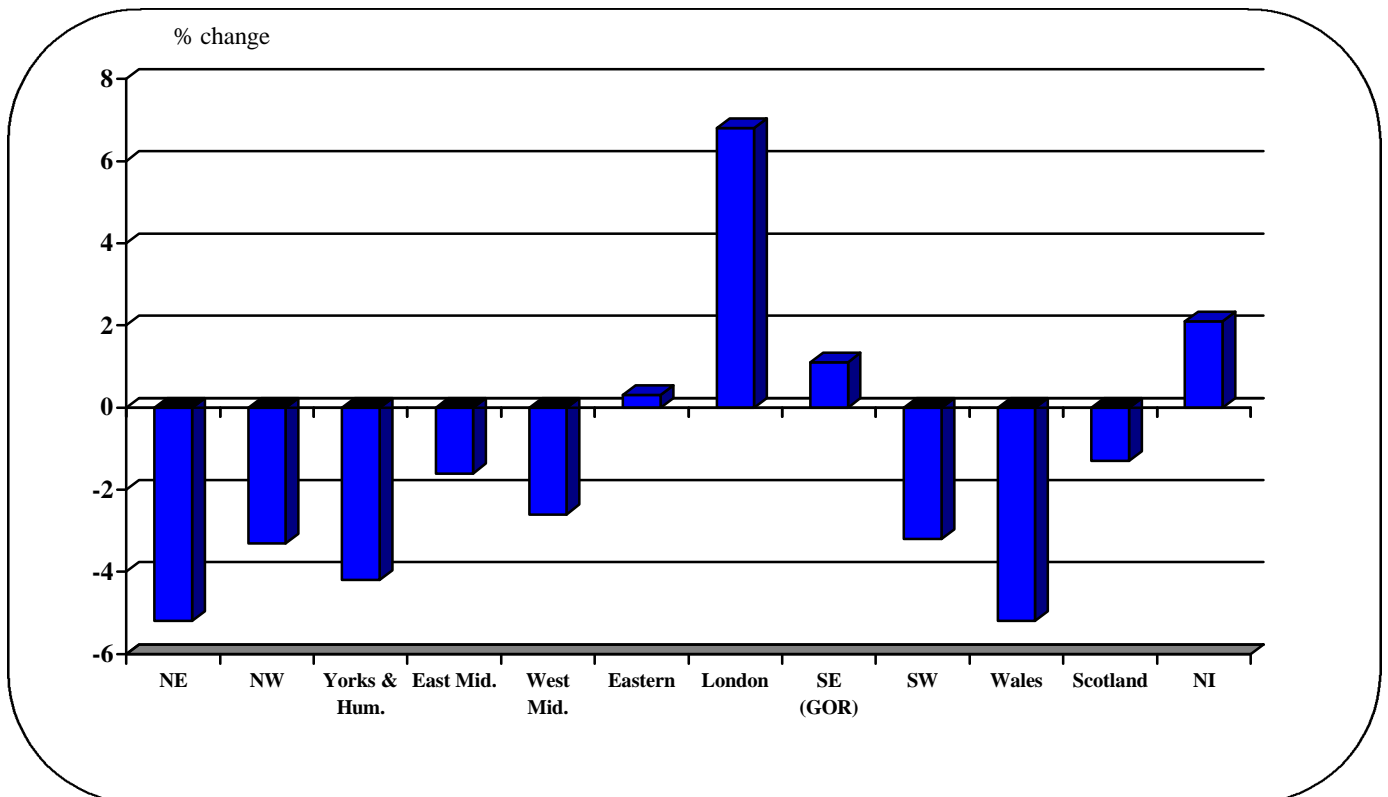


Table 15 shows the stock of VAT registered businesses for each District Council in Northern Ireland at the start of each year for the period 1994-1999. This is an indicator of the size of the business population. Derry and Limavady DCs have seen the greatest increase in enterprises registered for VAT during the period, while Belfast, Castlereagh, Newtownabbey and North Down have seen the greatest decrease.

Table 15 Enterprises registered for VAT at the start of the year 1994-1999

| District Council | 1994 | 1995 | 1996 | 1997 | 1998 | 1999 | % change 1994-1999 |
|-------------------------|---------------|---------------|---------------|---------------|---------------|---------------|-----------------------|
| Antrim | 1,520 | 1,515 | 1,530 | 1,585 | 1,600 | 1,640 | 7.9 |
| Ards | 2,205 | 2,165 | 2,175 | 2,180 | 2,180 | 2,205 | 0.0 |
| Armagh | 2,415 | 2,425 | 2,510 | 2,575 | 2,585 | 2,640 | 9.3 |
| Ballymena | 2,290 | 2,275 | 2,285 | 2,295 | 2,285 | 2,300 | 0.4 |
| Ballymoney | 1,140 | 1,130 | 1,155 | 1,170 | 1,175 | 1,195 | 4.8 |
| Banbridge | 1,585 | 1,560 | 1,570 | 1,605 | 1,635 | 1,655 | 4.4 |
| Belfast | 6,390 | 6,370 | 6,420 | 6,395 | 6,215 | 6,155 | -3.7 |
| Carrickfergus | 560 | 550 | 550 | 535 | 530 | 555 | -0.9 |
| Castlereagh | 1,030 | 1,025 | 1,005 | 1,005 | 990 | 990 | -3.9 |
| Coleraine | 1,805 | 1,785 | 1,785 | 1,790 | 1,780 | 1,810 | 0.3 |
| Cookstown | 1,740 | 1,730 | 1,765 | 1,810 | 1,845 | 1,870 | 7.5 |
| Craigavon | 2,110 | 2,125 | 2,115 | 2,125 | 2,150 | 2,130 | 0.9 |
| Derry | 1,945 | 1,960 | 2,010 | 2,080 | 2,105 | 2,225 | 14.4 |
| Down | 2,205 | 2,160 | 2,205 | 2,215 | 2,235 | 2,315 | 5.0 |
| Dungannon | 2,580 | 2,580 | 2,600 | 2,645 | 2,695 | 2,745 | 6.4 |
| Fermanagh | 3,270 | 3,235 | 3,315 | 3,375 | 3,425 | 3,510 | 7.3 |
| Larne | 1,000 | 990 | 1,000 | 1,005 | 1,030 | 1,050 | 5.0 |
| Limavady | 940 | 950 | 990 | 1,015 | 1,045 | 1,045 | 11.2 |
| Lisburn | 2,890 | 2,865 | 2,880 | 2,895 | 2,895 | 2,935 | 1.6 |
| Magherafelt | 1,810 | 1,810 | 1,830 | 1,860 | 1,910 | 1,970 | 8.8 |
| Moyle | 715 | 710 | 725 | 735 | 760 | 765 | 7.0 |
| Newry and Mourne | 3,230 | 3,230 | 3,240 | 3,320 | 3,375 | 3,475 | 7.6 |
| Newtownabbey | 1,605 | 1,595 | 1,580 | 1,555 | 1,525 | 1,545 | -3.7 |
| North Down | 1,520 | 1,520 | 1,485 | 1,480 | 1,450 | 1,460 | -3.9 |
| Omagh | 2,620 | 2,570 | 2,570 | 2,640 | 2,695 | 2,740 | 4.6 |
| Strabane | 1,560 | 1,560 | 1,575 | 1,605 | 1,620 | 1,665 | 6.7 |
| Northern Ireland | 52,665 | 52,380 | 52,875 | 53,510 | 53,755 | 54,615 | 3.7 |

Source: DTI SME Statistics Unit

Two tables follow on VAT registrations, de-registrations and net change during the period 1994-1998. Table 16 shows this by District Council and Table 17 by broad industry group.

Table 16 VAT registrations, de-registrations and net change by District Council, 1994-1998

| District Council | 1994 | | | 1995 | | | 1996 | | | 1997 | | | 1998 | | |
|-------------------------|--------------|--------------|-------------|--------------|--------------|------------|--------------|--------------|------------|--------------|--------------|------------|--------------|--------------|------------|
| | Reg. | De-reg. | Change | Reg. | De-reg. | Change | Reg. | De-reg. | Change | Reg. | De-reg. | Change | Reg. | De-reg. | Change |
| Antrim | 85 | 90 | -5 | 105 | 90 | 15 | 125 | 70 | 55 | 110 | 95 | 15 | 115 | 75 | 40 |
| Ards | 130 | 170 | -40 | 150 | 140 | 10 | 145 | 140 | 5 | 170 | 170 | 0 | 145 | 120 | 25 |
| Armagh | 140 | 130 | 10 | 180 | 95 | 85 | 165 | 100 | 65 | 155 | 145 | 10 | 160 | 105 | 55 |
| Ballymena | 120 | 135 | -15 | 120 | 110 | 10 | 115 | 105 | 10 | 125 | 135 | -10 | 100 | 85 | 15 |
| Ballymoney | 60 | 70 | -10 | 70 | 45 | 25 | 65 | 50 | 15 | 50 | 45 | 5 | 55 | 35 | 20 |
| Banbridge | 70 | 95 | -25 | 75 | 65 | 10 | 105 | 70 | 35 | 110 | 80 | 30 | 85 | 65 | 20 |
| Belfast | 495 | 515 | -20 | 585 | 530 | 55 | 570 | 595 | -25 | 530 | 710 | -180 | 550 | 610 | -60 |
| Carrickfergus | 40 | 50 | -10 | 50 | 50 | 0 | 55 | 70 | -15 | 50 | 55 | -5 | 55 | 30 | 25 |
| Castlereagh | 90 | 95 | -5 | 85 | 105 | -20 | 85 | 85 | 0 | 85 | 100 | -15 | 80 | 80 | 0 |
| Coleraine | 110 | 130 | -20 | 110 | 105 | 5 | 120 | 115 | 5 | 105 | 115 | -10 | 115 | 85 | 30 |
| Cookstown | 95 | 105 | -10 | 110 | 75 | 35 | 115 | 70 | 45 | 125 | 90 | 35 | 95 | 70 | 25 |
| Craigavon | 150 | 140 | 10 | 140 | 145 | -5 | 120 | 110 | 10 | 175 | 150 | 25 | 120 | 140 | -20 |
| Derry | 205 | 190 | 15 | 220 | 170 | 50 | 235 | 165 | 70 | 240 | 215 | 25 | 255 | 135 | 120 |
| Down | 125 | 165 | -40 | 165 | 120 | 45 | 120 | 110 | 10 | 150 | 130 | 20 | 180 | 100 | 80 |
| Dungannon | 185 | 185 | 0 | 145 | 125 | 20 | 170 | 125 | 45 | 170 | 120 | 50 | 160 | 110 | 50 |
| Fermanagh | 165 | 205 | -40 | 185 | 105 | 80 | 185 | 125 | 60 | 210 | 160 | 50 | 190 | 105 | 85 |
| Larne | 50 | 60 | -10 | 50 | 45 | 5 | 60 | 55 | 5 | 65 | 40 | 25 | 60 | 40 | 20 |
| Limavady | 80 | 65 | 15 | 75 | 35 | 40 | 70 | 45 | 25 | 75 | 45 | 30 | 40 | 40 | 0 |
| Lisburn | 180 | 205 | -25 | 195 | 175 | 20 | 190 | 175 | 15 | 235 | 235 | 0 | 190 | 150 | 40 |
| Magherafelt | 110 | 110 | 0 | 90 | 70 | 20 | 105 | 75 | 30 | 125 | 75 | 50 | 125 | 65 | 60 |
| Moyle | 45 | 50 | -5 | 45 | 30 | 15 | 40 | 30 | 10 | 55 | 30 | 25 | 35 | 30 | 5 |
| Newry and Mourne | 215 | 210 | 5 | 215 | 210 | 5 | 245 | 165 | 80 | 220 | 165 | 55 | 245 | 145 | 100 |
| Newtownabbey | 120 | 130 | -10 | 115 | 130 | -15 | 115 | 140 | -25 | 110 | 140 | -30 | 145 | 125 | 20 |
| North Down | 150 | 155 | -5 | 150 | 180 | -30 | 150 | 155 | -5 | 145 | 175 | -30 | 125 | 115 | 10 |
| Omagh | 120 | 165 | -45 | 110 | 110 | 0 | 165 | 95 | 70 | 160 | 105 | 55 | 130 | 85 | 45 |
| Strabane | 90 | 90 | 0 | 80 | 60 | 20 | 80 | 50 | 30 | 95 | 80 | 15 | 95 | 50 | 45 |
| Northern Ireland | 3,425 | 3,710 | -285 | 3,615 | 3,120 | 495 | 3,715 | 3,080 | 635 | 3,850 | 3,605 | 245 | 3,685 | 2,825 | 860 |

Source: DTI SME Statistics Unit

Table 17 VAT registrations, de-registrations and net change by broad industry group, 1994-1998

| Industry (SIC(92) Section) | | 1994 | | | 1995 | | | 1996 | | | 1997 | | | 1998 | | |
|-------------------------------|-----------------------------------|--------------|--------------|-------------|--------------|--------------|------------|--------------|--------------|------------|--------------|--------------|------------|--------------|--------------|------------|
| | | Reg. | De-reg. | Change | Reg. | De-reg. | Change | Reg. | De-reg. | Change | Reg. | De-reg. | Change | Reg. | De-reg. | Change |
| A,B | Agriculture, Forestry and Fishing | 655 | 895 | -240 | 610 | 305 | 305 | 640 | 415 | 225 | 660 | 325 | 335 | 510 | 355 | 155 |
| C,E | Mining and Energy | 5 | 10 | -5 | 5 | 5 | 0 | 0 | 10 | -10 | 10 | 5 | 5 | 5 | 5 | 0 |
| D | Manufacturing | 220 | 245 | -25 | 305 | 260 | 45 | 350 | 235 | 115 | 270 | 315 | -45 | 235 | 260 | -25 |
| F | Construction | 485 | 440 | 45 | 465 | 380 | 85 | 465 | 325 | 140 | 545 | 455 | 90 | 565 | 335 | 230 |
| G | Wholesale, Retail & Repairs | 830 | 1,220 | -390 | 935 | 1,260 | -325 | 925 | 1,130 | -205 | 920 | 1,325 | -405 | 930 | 985 | -55 |
| H | Hotels & Restaurants | 280 | 270 | 10 | 310 | 300 | 10 | 300 | 315 | -15 | 315 | 365 | -50 | 285 | 270 | 15 |
| I | Transport | 135 | 135 | 0 | 205 | 120 | 85 | 190 | 150 | 40 | 200 | 195 | 5 | 215 | 155 | 60 |
| J | Finance | 25 | 10 | 15 | 20 | 25 | -5 | 20 | 15 | 5 | 30 | 15 | 15 | 15 | 5 | 10 |
| K | Business Services | 460 | 240 | 220 | 500 | 250 | 250 | 575 | 255 | 320 | 675 | 365 | 310 | 735 | 300 | 435 |
| L,O | Other Services | 290 | 220 | 70 | 215 | 205 | 10 | 215 | 170 | 45 | 190 | 175 | 15 | 160 | 125 | 35 |
| M, N | Education, Health & Social Work | 50 | 20 | 30 | 35 | 15 | 20 | 30 | 60 | -30 | 35 | 65 | -30 | 30 | 30 | 0 |
| Northern Ireland | | 3,425 | 3,710 | -285 | 3,615 | 3,120 | 495 | 3,715 | 3,080 | 635 | 3,850 | 3,605 | 245 | 3,685 | 2,825 | 860 |

Source: DTI SME Statistics Unit

FOREIGN OWNERSHIP ANALYSES

Information from the market information company Dun and Bradstreet on foreign owned businesses operating in the United Kingdom is loaded onto the IDBR annually. Statistics Research Branch, DETI supplement this with information from two sources: (i) the Industrial Development Board's (IDB's) list of client companies (a list which gives details of businesses which have received financial assistance from the IDB and its predecessors) and (ii) a list of publicly traded US companies with subsidiaries, affiliates or branch offices employing more than ten people in Northern Ireland, published by the Investor Responsibility Research Center, Washington D.C. (The IRRC is an independent, non-profit making research firm founded in 1972.) The following tables show some of the analyses from these combined sources.

Table 18 shows the number of foreign owned businesses and the employees within them operating in Northern Ireland over the last few years. In 1999, there were approximately 430 foreign owned businesses in Northern Ireland employing almost 57,850 people. Foreign owned businesses are therefore a key player in employing local people as they employ 9.3% of all employees in Northern Ireland. 26 countries had businesses operating in Northern Ireland with the Republic of Ireland and USA owning more than 100 businesses. These two countries accounted for 53.6% of employees in foreign owned businesses.

Table 19 shows that the majority of foreign owned companies in Northern Ireland are in the manufacturing and wholesale and retail sectors. Like all businesses in Northern Ireland, the vast majority of employees in foreign owned companies work in large companies (those with 250 or more employees) but small businesses account for the majority of the foreign owned companies operating in Northern Ireland (Table 20).

Note: As the number of businesses is drawn from a number of sources, the actual numbers are given and are not disclosive. However the employee figures are taken from the IDBR and are thus subject to the usual confidentiality constraints.

Table 18 Number of foreign owned businesses operating in Northern Ireland and employees within them

| Country | 1996 | | 1997 | | 1998 ¹ | | 1999 | |
|--|------------|---------------|------------|---------------|-------------------|---------------|------------|---------------|
| | Businesses | Employees | Businesses | Employees | Businesses | Employees | Businesses | Employees |
| Republic of Ireland | 100 | 12,365 | 109 | 15,740 | 123 | 15,405 | 139 | 15,134 |
| USA | 71 | 10,035 | 112 | 16,145 | 111 | 17,235 | 124 | 15,877 |
| France | 23 | 2,005 | 30 | 3,930 | 23 | 2,650 | 27 | 4,036 |
| Netherlands (incl. Netherlands Antilles) | 17 | * | 25 | 2,220 | 30 | 2,010 | 29 | 1,598 |
| Germany | 17 | * | 22 | 1,075 | 22 | 955 | 24 | 1,002 |
| Denmark | 13 | * | 8 | * | 12 | * | 5 | * |
| Japan | 11 | * | 12 | * | 15 | * | 15 | * |
| Switzerland | 10 | * | 7 | * | 5 | * | 10 | * |
| Canada | 8 | * | 7 | * | 9 | * | 9 | * |
| Australia | 7 | * | 7 | * | 6 | * | 4 | * |
| South Korea | 6 | * | 8 | * | 8 | * | 8 | * |
| Sweden | 4 | * | 5 | * | 2 | * | 2 | * |
| Finland | 3 | * | 3 | * | 3 | * | 4 | * |
| Hong Kong | 3 | * | 2 | * | 0 | * | 0 | * |
| Belgium | 3 | * | 4 | * | 5 | * | 6 | * |
| South Africa | 2 | * | 0 | * | 2 | * | 3 | * |
| Luxembourg | 2 | * | 2 | * | 0 | * | 0 | * |
| Italy | 1 | * | 1 | * | 1 | * | 2 | * |
| Portugal | 1 | * | 1 | * | 1 | * | 1 | * |
| Norway | 1 | * | 1 | * | 1 | * | 2 | * |
| Liechtenstein | 1 | * | 1 | * | 0 | * | 0 | * |
| Channel Islands | 0 | * | 0 | * | 5 | * | 4 | * |
| Isle of Man | 0 | * | 0 | * | 4 | * | 3 | * |
| Malaysia | 0 | * | 1 | * | 1 | * | 1 | * |
| Bermuda | 0 | * | 0 | * | 0 | * | 2 | * |
| Austria | 0 | * | 0 | * | 0 | * | 1 | * |
| Bahamas | 0 | * | 0 | * | 0 | * | 1 | * |
| Taiwan | 0 | * | 0 | * | 0 | * | 1 | * |
| Total | 304 | 42,810 | 368 | 55,850 | 389 | 57,465 | 427 | 57,836 |

¹ Figures from 1998 are not directly comparable with earlier years as Dun and Bradstreet introduced a new (and improved) system for collecting information on the country of ownership of businesses during that year.

* Figure not shown due to confidentiality constraints.

Figure 6 Countries which have more than 10 businesses operating in Northern Ireland, 1999

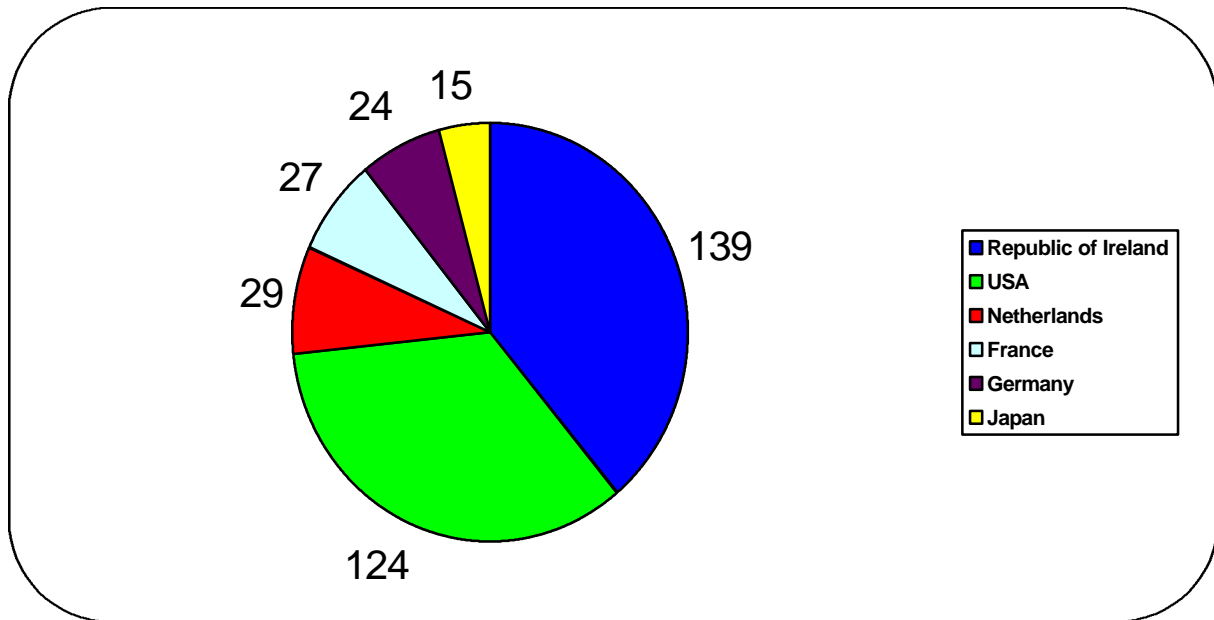


Table 19 Number of foreign owned companies by broad industry group, 1999

| SIC(92) Section | Companies | Employees |
|---|------------|---------------|
| A,B Agriculture, hunting and forestry | 2 | * |
| C Mining and quarrying | 4 | * |
| D Manufacturing | 144 | 34,047 |
| E Electricity, gas and water supply | 3 | * |
| F Construction | 22 | 1,012 |
| G Wholesale and retail trade | 134 | 9,691 |
| H Hotels and restaurants | 7 | * |
| I Transport, storage and communication | 24 | 1,270 |
| J Financial intermediation | 30 | 5,573 |
| K Real estate, renting and business activities | 54 | 3,370 |
| N Health and social work | 1 | * |
| O Other community, social and personal service activities | 2 | * |
| Total | 427 | 57,836 |

Table 20 Number of foreign owned companies by employee sizeband, 1999

| Sizeband | 1-9 | 10-19 | 20-49 | 50-99 | 100-199 | 200-249 | 250-499 | 500+ | Total |
|-----------|-----|-------|-------|-------|---------|---------|---------|--------|---------------|
| Companies | 135 | 50 | 78 | 53 | 45 | 15 | 29 | 22 | 427 |
| Employees | 581 | 679 | 2,481 | 3,733 | 6,432 | * | 10,430 | 30,232 | 57,836 |

FURTHER INFORMATION

If you have any further questions about the IDBR.

Contact: Ian Gallagher,
Statistics Research Branch, Department of Enterprise, Trade and Investment,
Netherleigh, Massey Avenue, Belfast BT4 2JP

Telephone: 028 9052 9430 Fax: 028 9052 9459
E-mail: ian.gallagher@detini.gov.uk

If you would like ad-hoc analyses run from the IDBR.

Contact: Business Registers Unit, Room 1.062,
Office for National Statistics, Government Buildings,
Cardiff Road, Newport South Wales NP9 1XG

Telephone: 0800 731 5761 or 01633 813269 Fax: 01633 812477
E-mail: claire.powell@ons.gov.uk

Please note that ONS will charge for this service and data will be subject to disclosure checks before being released. For further details of the analyses/samples available from the IDBR, see Annex 3, or visit the ONS website at www.ons.gov.uk where you should choose “Products & Services”, then choose “Services” and then choose “ONS Business Register”.

If you have any further questions about VAT registrations and de-registrations.

Contact: SME Statistics Unit, Department of Trade and Industry,
Level 2, St Mary’s House, Moorfoot, Sheffield S1 4PQ

Telephone: 0114 259 7538 Fax: 0114 259 7505
E-mail: Ian.Dale@SFSH-Sheffield.dti.gov.uk

If you have any further questions about the Republic of Ireland’s Business Register.

Contact: Kevin Phelan, Business Register, Central Statistics Office,
Skehard Road, Cork, Republic of Ireland

Telephone: 00 353 21 453 5208 Fax: 00 353 21 453 5299
E-mail: Kevin.Phelan@cso.ie

For other information on economic statistics.

Contact: Statistics Research Branch, Department of Enterprise, Trade and Investment,
Netherleigh, Massey Avenue, Belfast BT4 2JP

Telephone: 028 9052 9399/9897/9494 Fax: 028 9052 9459
Web site: www.detini.gov.uk/statsres

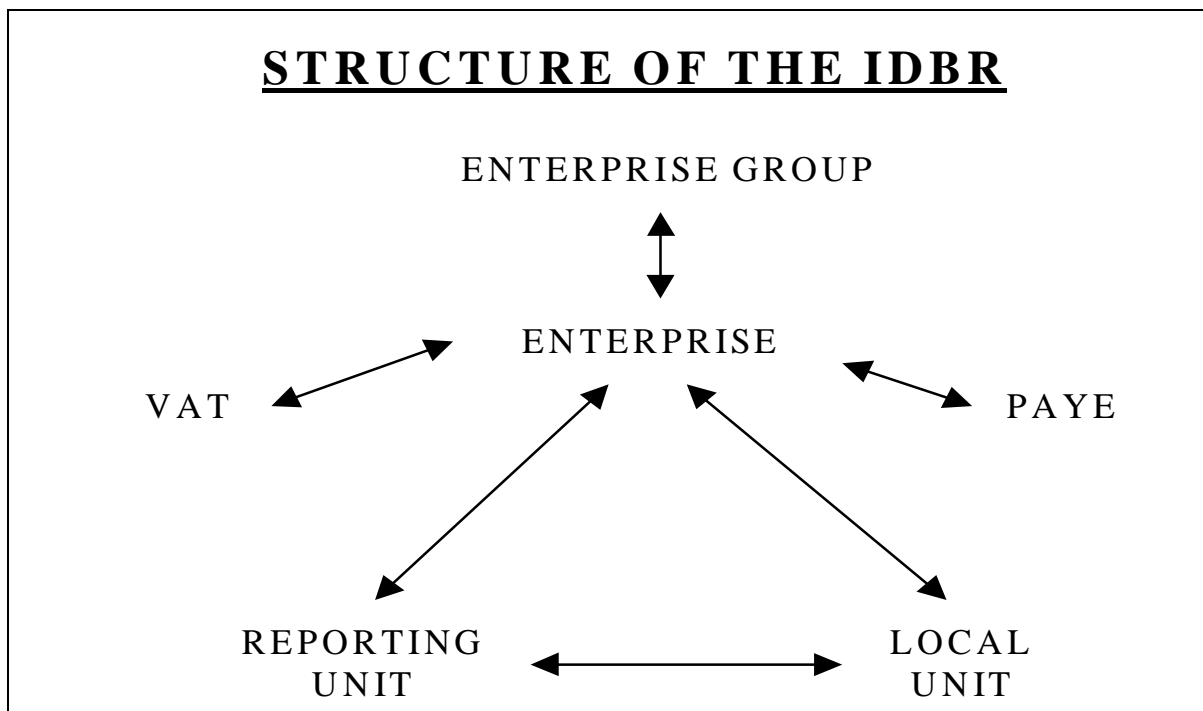
ANNEX 1 IDBR STRUCTURE

Business structures are complex and are based on administrative procedures that are often not suitable for statistical inquiries. The VAT unit is there simply to facilitate the collection of VAT and some employers maintain separate PAYE schemes for salaried and non-salaried workers, giving two administrative units for the same workplace. For these reasons the administrative data are mapped onto statistical units for the purpose of statistical inquiries.

Thus there are two types of business units on the IDBR - the administrative unit and the statistical unit. The administrative units are the VAT and PAYE units from which the statistical units (enterprise group, enterprise and local unit(s)) are generated. Finally the reporting unit holds the mailing address to which inquiry forms are sent, and displays summary information, such as the latest turnover figure, the number of local units and employees within the enterprise and a contact name and telephone/fax number (if available).

The structure of a business can be thought of as being made up of "layers," with the enterprise group forming the "top layer," therefore providing the overall picture of all enterprises within the group. The enterprise forms the next "layer" with data for an individual business collected from the administrative units ("lower layers") attached.

Information is received from the data sources (i.e. VAT, PAYE and local units) and fed up to the enterprise, and up to the enterprise group. The links between the various units can be seen in the diagram below and they are described in further detail in Annex 2.



ANNEX 2 GLOSSARY OF IDBR TERMS AND ABBREVIATIONS

The IDBR uses a number of terms to describe a business, which are explained below.

Enterprise Group

An enterprise group is a group of legal units/enterprises under common ownership. It contains aggregate information on the number of companies and employees in the group, as well as the total turnover and foreign ownership details. For example, Short Brothers plc and Belfast City Airport are in the same enterprise group.

Enterprise

An enterprise is the smallest combination of legal units under common ownership (generally based on VAT or PAYE) which have a certain degree of autonomy within an enterprise group. It is the statistical unit that most closely equates to a business. It holds aggregated information gathered from administrative and statistical sources within that enterprise to give an overall picture of what is going on in the business. For example, Short Brothers plc is an enterprise.

VAT

HM Customs and Excise notifies ONS of all new businesses which are above the VAT threshold (currently an annual taxable turnover limit of £52,000) and those businesses which are below the threshold but have chosen to register voluntarily for VAT. IDBR section receives a monthly list of such businesses in Northern Ireland and issues proving forms to them. Once the information is received, the IDBR is updated and the business then becomes available for selection for statistical inquiries.

PAYE

Inland Revenue notifies ONS of all employers with employees earning above the income tax threshold (i.e. operating PAYE schemes). IDBR section receives a quarterly list of such companies in Northern Ireland and proves them in the same way as for VAT traders.

Local Unit

A local unit is an individual site (factory, shop, office, etc.) at which an enterprise conducts its business. For example, the Queens Island site of Short Brothers plc is a local unit.

Reporting Unit

The reporting unit holds the mailing address to which inquiry forms are sent, and displays summary information, such as the latest turnover figure, the number of local units and employees within the enterprise and a contact name and telephone/fax number (if available). It also holds information on what statistical inquiries the enterprise has been selected for. There are two types of reporting units in Northern Ireland - (i) an enterprise reporting unit reports for all the local units within the enterprise (for example, Short Brothers plc will include local units for the Queen's Island, Dunmurry and Newtownards sites) and (ii) a local unit list reporting unit reports on a specified list of local units and these usually distinguish multinational companies operating in Northern Ireland. For example, Marks and Spencer have one reporting unit for activity in Great Britain and another for activity in Northern Ireland.

Proved/Proven Unit

A proved/proven unit is any enterprise on the IDBR which has a live local unit attached to it. The employee information for the local unit(s) comes from sources such as the Northern Ireland Census of Employment, the Northern Ireland Quarterly Employment Survey, regular and miscellaneous proving exercises and other surveys conducted by Statistics Research Branch, DETI and ONS. Other proved/proven units include those enterprises which are limited companies but have 0 employees, the business being conducted by working directors or staff paid by another business which the parent enterprise owns. Such enterprises are proven, as are self-employed persons and partnerships who may also have 0 employees.

Unproved/Unproven Unit

Conversely, an unproved/unproven unit is any enterprise on the IDBR that does not have a local unit attached to it **and** which has not been selected for the Northern Ireland Census of Employment or regular and miscellaneous proving exercises.

IDBR section in Statistics Research Branch continually prove new businesses and also issue forms to those businesses which are imputed (from VAT and/or PAYE information) to have 20 or more employees.

ABBREVIATIONS

DCA District Council Areas

DETI Department of Enterprise, Trade and Investment

DTI Department of Trade and Industry

IDBR Inter Departmental Business Register

ONS Office for National Statistics

PAYE Pay As You Earn

SIC Standard Industrial Classification

VAT Value Added Tax

ANNEX 3 ANALYSES AND SAMPLES FROM THE IDBR

1. STANDARD ANALYSES FROM THE IDBR – Non-disclosive data

Analyses that are produced as part of this service are at the same level at which the business statistical surveys are conducted – i.e. business level or local unit (work site) level.

Data available

Tables can be produced at two levels:

- Business level
- Local unit (work site) level

Variables available are:

- Count
- Employment
- Employees
- Turnover (at business level only)

The table can be based on:

- Employment/employees/turnover sizebands
- Classification (sic92)
- Status (public/private sector)
- Location (e.g. government office region, district council, postcode etc).

Disclosure

All data must be non-disclosive (i.e. must not lead to the identification of an individual business). All figures will, therefore, be rounded to the nearest 5. Where the count is less than 20 and employment/employees/turnover are shown the employment/employees/turnover will be removed. Where ONS remove one in a row or column another will be automatically removed to avoid disclosure by deduction.

Other Issues

- Charging

Charges for work done are in line with the ONS charging policy, which is currently £60 per hour (plus VAT where applicable). Additional charges will be made for data that will be published commercially or for resale.

- Timeliness of data

Annual extracts are taken from the IDBR. These are available to analyse once the “PA1003 Size Analysis of United Kingdom Businesses” has been published. The latest published data is 1999.

- Timescale

ONS aim to despatch the standard analysis within 2 weeks from confirmation of job. The timescale for special requirements would be subject to discussion.

2. STANDARD ANALYSES FROM THE IDBR – Samples (disclosive data)

Samples

The easiest way to select a sample is to use the standard sampling suite of programs on the IDBR. This selects units from the register at the business level. The user should indicate their specification from the following options:

- Employment/employee sizebands
- Classification (SIC92) ranges
- Government Office Region (GOR) range

The standard sampling suite runs selections overnight on Tuesday and weekend nights. All sampling requests would run on this cycle.

Population counts (for grossing) will be taken at the same time as the sample.

Data Available

Data for standard analyses are available at business level. Variables available are:

Reference number

Name

Trading Style

Address and postcode

Legal status

Employment

Employees

Turnover

Classification

Location (also lower levels are available e.g. county, district, unitary authority)

Legal Issues

- Disclosive data can only be released to authorised outside bodies and contractors working for government departments.
- A form must be signed which confirms that:
 - the data will only be used for the purpose agreed with ONS.
 - the data will be kept secure.
 - the data will not be disclosed to any third party without ONS' permission.
 - legal sanctions against unlawful disclosure will be imposed.

Other Issues

- Charges

Current ONS charges are £60 per hour (plus VAT if required electronically). Additional charges will be made for data that will be published commercially or for resale.

- Timeliness of data

Data are provided from the live IDBR at the time of request or from fixed extracts that are taken once a year in April. Population counts are produced to be consistent with those timescales.

- Timescale

Data will be despatched within 4 weeks from confirmation of job.

3. STANDARD ANALYSES FROM THE IDBR – Disclosive data

Data available

Data for standard analyses are available at business level. Variables available are:

Reference number

Name

Trading Style

Address and postcode

Legal status

Employment

Employees

Turnover

Classification (sic92)

Location (e.g. government office region, county, district, unitary authority etc)

Legal Issues

- Disclosive data can only be released to authorised outside bodies and contractors working for government departments.
- A form must be signed which confirms that:
 - the data will only be used for the purpose agreed with ONS.
 - the data will be kept secure.
 - the data will not be disclosed to any third party without ONS' permission.
 - legal sanctions against unlawful disclosure will be imposed.

Other issues

- Charges

Current ONS charges are £60 per hour (plus VAT if required electronically). Additional charges will be made for data that will be published commercially or for resale.

- Timeliness of data

Data are provided from the live IDBR at the time of request or from fixed extracts that are taken once a year in April. Population counts are produced to be consistent with those timescales.

- Release of data

Data can be sent as hard copy, disk or CD. Disclosive data cannot be sent by email or fax because of confidentiality issues. Once data has been passed from the ONS, it becomes the responsibility of the recipient. If confidential data is being passed to a third party under contract, then the ONS wishes to see all legal contracts before releasing the data.

- Timescale

ONS aim to despatch the standard analysis within 2 weeks from confirmation of job. The timescale for special requirements would be subject to discussion.

For further information on analyses please contact Claire Powell on ☎01633 813269 or e-mail claire.powell@ons.gov.uk

For further information on samples please contact Tim Evans on ☎01633 813126 or e-mail tim.evans@ons.gov.uk

For general IDBR queries please contact Susan Wilmott on ☎01633 813229 or e-mail idbr.helpdesk@ons.gov.uk

Or visit the ONS website at www.statistics.gov.uk where you should choose “Products & Services”, then choose “Services” and then choose “ONS Business Register”.