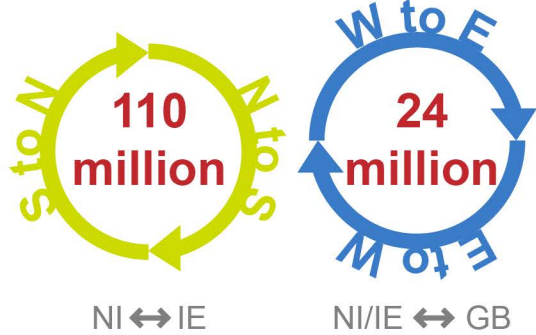
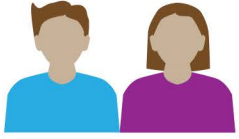


# People Movement, Migration & Transport 2018

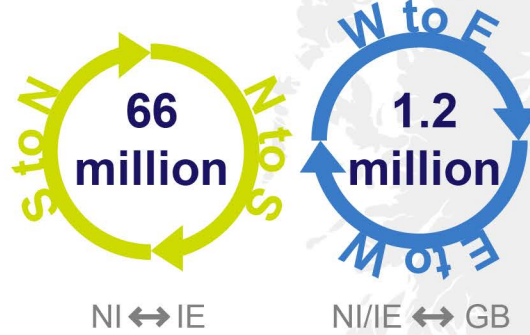
NI: Northern Ireland IE: Ireland GB: Great Britain

## Annual Movements

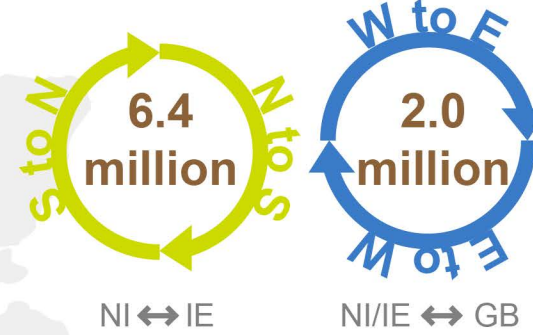
### People



### Vehicles (exc. HGVs)



### HGVs



**181,000 flights**  
NI/IE ↔ GB



**Sea**  
45,900 arrivals & departures  
from NI/IE ports

## Population in NI



**87,000 people**

resident in NI who were born in EU27 (4.6% of population)

**53,000 workers**

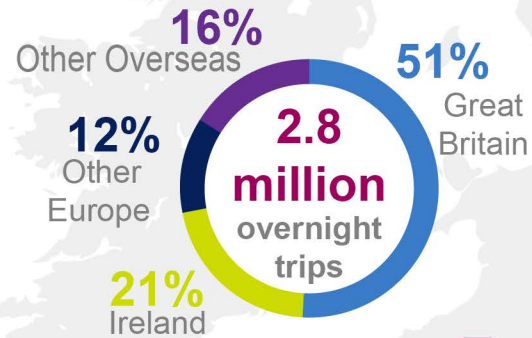
resident in NI who were born in EU27 (6.1% of workers)



**2,200 births**

in NI each year to mothers who were born in EU27 (9.4% of all births)

## Tourism in NI



**£669 million**

spent by external visitors on overnight trips to NI equivalent to 2% of NI GVA

**352,000**

overnight business trips by visitors

## Cross-Border Shopping

**€458 million**

spent in NI on cross-border shopping by residents of Ireland in the 12 months to quarter 1 2018



**66%** bought food & groceries



**55%** bought clothes & sports goods



**40%** bought alcohol



**14%** of households in Ireland made at least one shopping trip to Northern Ireland

