



Department of  
**Finance and  
Personnel**  
[www.dfpni.gov.uk](http://www.dfpni.gov.uk)

**Labour Market**

**Statistics Bulletin**

# Monthly Labour Market Report

**January 2014**



## **A NATIONAL STATISTICS PUBLICATION**

The United Kingdom Statistics Authority has designated these statistics as National Statistics, in accordance with the Statistics and Registration Service Act 2007 and signifying compliance with the Code of Practice for Official Statistics.

Designation can be broadly interpreted to mean that the statistics:

- meet identified user needs;
- are well explained and readily accessible;
- are produced according to sound methods, and
- are managed impartially and objectively in the public interest.

Once statistics have been designated as National Statistics it is a statutory requirement that the Code of Practice shall continue to be observed.

Northern Ireland Statistics &  
Research Agency

# **Monthly Labour Market Report**

January 2014

Crown Copyright

# Contents

**1**  
Labour Market  
**Pages 1-3**

**2**  
Labour Force Survey  
**Pages 4-6**

**3**  
Claimant Count  
**Pages 7-10**

**4**  
Redundancies  
**Page 11**

**5**  
Quarterly  
Employment Survey -  
QES  
**Pages 12-14**

**6**  
Annual Survey of  
Hours and Earnings -  
ASHE  
**Pages 15-17**

**7**  
Vacancy Statistics  
and Employment &  
Training measures  
**Page 18-19**

**8**  
International-  
Regional Analysis  
**Pages 20-21**

**9**  
Further Information  
**Page 22-24**

# Labour Market

# 1

Seasonally adjusted Labour Force Survey (LFS) estimates for Northern Ireland for the period September - November 2013 showed an increase over the quarter in the number of employed and unemployed while the number of economically inactive decreased. The seasonally adjusted claimant count in December 2013 decreased by 600 over the month to 59,500. There were 103 proposed redundancies notified in the latest reference period and 122 confirmed redundancies in December 2013.

## Employment

The number of persons in employment in the period September - November 2013 was estimated at 804,000. This estimate increased by 6,000 over the quarter but remained unchanged over the year. The employment rate for those aged 16-64 was estimated at 67.4%, this increased by 0.7 percentage points over the quarter and by 0.3 percentage points over the year. The employment rate in NI remained below the UK average (72.1%) and was the lowest rate among the twelve UK regions.

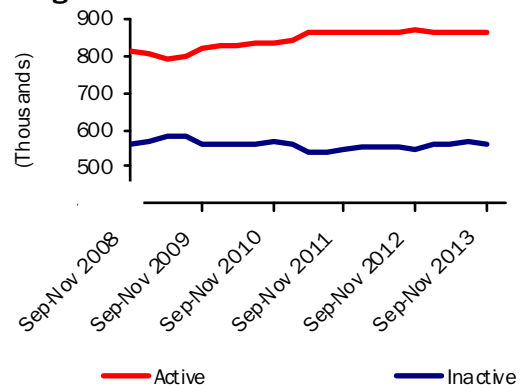
## Unemployment

The unemployment rate for the period September - November 2013 was estimated at 7.3%. This estimate remained the same over the quarter and decreased by 0.6 percentage points over the year. The number of unemployed persons was estimated at 63,000, up 1,000 over the quarter and down 6,000 over the year.

Unadjusted figures show that 51.1% of the unemployed have been unemployed for 1 year or more – down 4.7 percentage points over the year. They also estimate the unemployment rate for 18 - 24 year olds at 22.5% – up 3.4 percentage points over the year.

## Seasonally Adjusted Labour Market Summary for Northern Ireland (16+)

Figure 1



## Economically Inactive

The seasonally adjusted number of economically inactive persons in the period September - November 2013 was estimated at 563,000. This figure has decreased by 5,000 over the quarter but increased by 15,000 over the year.

The NI economic inactivity rate for those aged 16-64 stood at 27.2%. This is significantly higher than the UK average rate (22.2%) and is the highest of the twelve UK regions. Unadjusted figures estimate that 28% of the economically inactive, aged 16-64, in NI are students, 26% are sick/disabled, 25% are looking after the family/home, 12% are retired and 9% are 'other' reason.

Unadjusted figures, of all those economically inactive, show that while 90% of the inactive do not want work, the remaining 10% (57,000) want employment but do not satisfy the full ILO job search criteria (by actively seeking work and being available to start a job).

Estimates from the LFS have an associated

## Northern Ireland Labour Market Summary (seasonally adjusted)

Table 1

	Period	Estimate	Sampling Variability of estimate	Change over year	Sampling Variability of change
Employment	Sep-Nov 2013	804,000	+/-24,000	0	+/-31,000
Unemployment	Sep-Nov 2013	63,000	+/-12,000	-6,000	+/-16,000
Economically inactive	Sep-Nov 2013	563,000	+/-22,000	15,000	+/-28,000
Unemployment rate	Sep-Nov 2013	7.3%	+/-1.3pps	-0.6pps	+/-1.8pps
Employment rate <sup>1</sup>	Sep-Nov 2013	67.4%	+/-1.8pps	0.3pps	+/-2.2pps
Economic inactivity rate <sup>1</sup>	Sep-Nov 2013	27.2%	+/-1.7pps	0.2pps	+/-2.1pps
Claimant Count	December 2013	59,500		-5,300	

Note: pps = percentage points, <sup>1</sup> Rates based on new definition of working age (i.e. 16-64 for males and females) - see Section 9 for details.

Department of Finance & Personnel

degree of statistical error as they are based on a sample of the population. The annual changes for the main LFS categories of employment, unemployment and economic inactivity were tested for statistical significance. The results showed that none of the annual changes in the estimates were statistically significant i.e. the recorded change did not exceed the variability expected from a sample survey of this size (see table 1 and Section 9 for details).

**Unemployment Regional Comparison**

The latest NI seasonally adjusted unemployment rate (7.3%) is above the overall UK average rate (7.1%) and was the sixth highest rate among the twelve UK regions. The NI rate was below the European Union (10.9%) and Republic of Ireland (12.6%) rates for October 2013. Comparable figures for the three months to October 2013 estimate the NI unemployment rate for 18-24 year olds at 23.8%, compared to a UK average rate of 19.1%.

**Claimant Count**

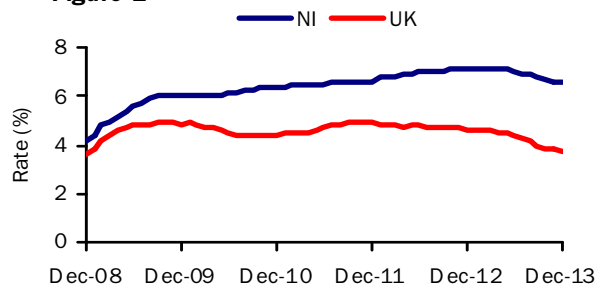
The more recent seasonally adjusted claimant count decreased by 600 from last revised month's total. It now stands at 59,500 (6.6% of the workforce) in December 2013. Over the year the Claimant Count in NI has decreased by 5,300 (8.2%) and the workforce unemployment rate has decreased by 0.6 percentage points. Latest figures show that there has been a fall of 2,700 in the claimant count over the most recent four months and that this is the first time there has been a fall in eleven consecutive months since April 2000.

**Claimant Count Regional Comparison**

The seasonally adjusted claimant count rate in NI (6.6%) was higher than the UK average rate (3.7%) and was the highest rate among the twelve UK regions. This is the 45<sup>th</sup> consecutive month that NI has had the highest or second highest UK region unemployment rate, on this measure. The monthly decrease in NI claimants (1.0%) was lower than the UK average decrease (1.9%) during the same period. The annual decrease in NI claimants (8.2%) was the lowest decrease of twelve UK regions (the annual decrease in the UK was 19.8%).

**Seasonally Adjusted Claimant Count Monthly Rates**

**Figure 2**



**Claimant count rates for District Council Areas**

Figure 3 (unadjusted numbers as a percentage of the resident working age population) show that the highest rates at December 2013 were in Derry (8.3%), Strabane (7.5%), Belfast (6.8%), and Limavady (6.3%). All 26 areas showed a decrease in levels over the year. Those that showed the lowest percentage decrease in levels over the year to December 2013 were Strabane (1.2%), Derry (2.6%) and Fermanagh (4.7%). For further District Council data please see section 3 of the Labour Market Report.

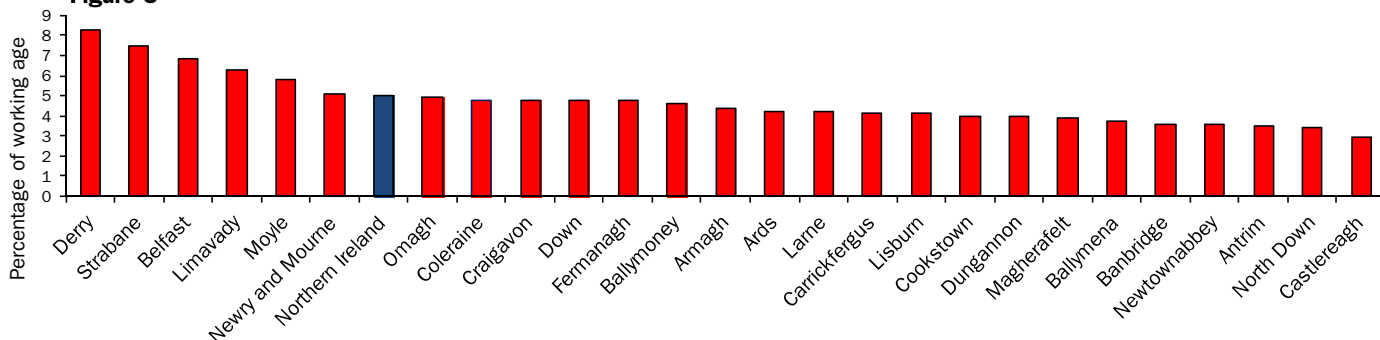
**Context**

Please note that although there is a large degree of overlap between the LFS and claimant count measures of unemployment, they measure unemployment using different criteria. While they are broadly consistent in terms of longer term trends, the results may differ in any given period. A full explanation of differences between the LFS and claimant count definitions of unemployment are provided at the following link [http://www.detini.gov.uk/unemployment\\_measures.pdf](http://www.detini.gov.uk/unemployment_measures.pdf).

It should also be noted that while the claimant count provides a complete census of all those in receipt of Jobseekers Allowance the LFS is a survey based measure which has an associated statistical margin of error around all estimates, including the level of unemployment.

**Unadjusted Claimant Count Rates By District Council Area**

**Figure 3**



## Redundancies

There were 103 proposed redundancies notified during the period mid December 2013 to mid January 2014. This compares to 316 proposed redundancies that were notified in the previous monthly period.

There were 122 confirmed redundancies in the month of December (Figure 5). Over the latest twelve month period there were a total of 2,011 confirmed redundancies, a decrease of 40% from the previous year (3,353).

Over the latest twelve month period there were a total of 2,172 proposed redundancies, a decrease of 51% from the previous year (4,420). Currently there are 891 outstanding redundancies (that is, proposed but not confirmed), which is 21% lower than this time last year (1,133).

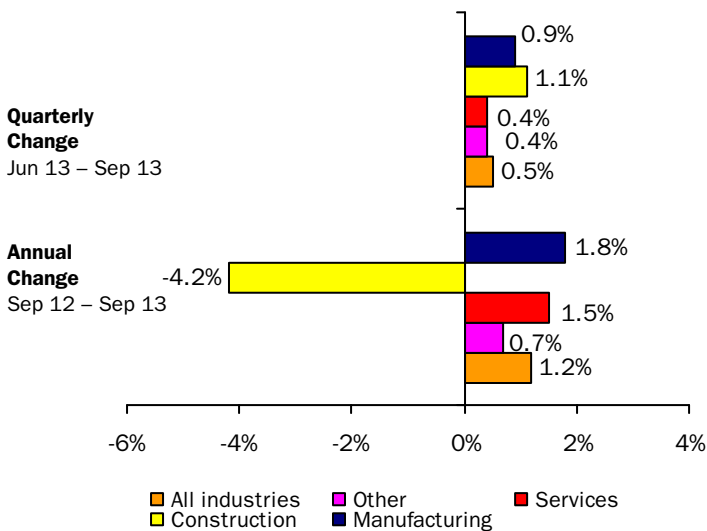
Note that since all proposed redundancies do not actually take place, the confirmed total provides a better indication of real job losses.

## Quarterly Employment Survey

The estimated seasonally adjusted employee jobs total in Northern Ireland at September 2013 was 703,020. This represents an increase (+3,290 jobs) from the revised figure for the previous quarter and represents an increase of 8,620 jobs over the year (see Section 9 for details of QES revisions).

### Annual and Quarterly changes in employee jobs (seasonally adjusted\*)

Figure 4

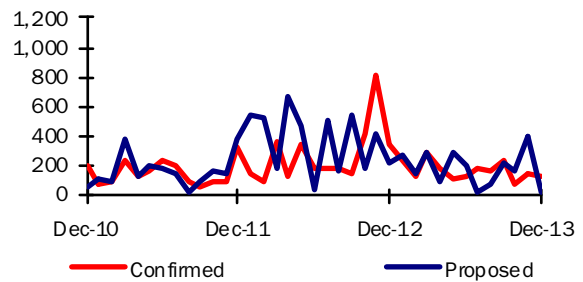


The seasonally adjusted quarterly change consisted of increases across all sectors; in the Service Sector (+2,200 jobs), in the Manufacturing Sector (+690 jobs), in the Construction Sector (+320 jobs) and in the Other Industries Sector (+80 jobs). Over the same period the Public Sector remained relatively unchanged decreasing by 40 jobs while the private sector increased by 3,110 jobs.

Over the year to September 2013, the public sector increased by 0.5% (+1,100 jobs) compared to an increase of 1.6% (+7,570 jobs) in the private sector.

## Confirmed and Proposed Redundancies December 10 - December 13

Figure 5

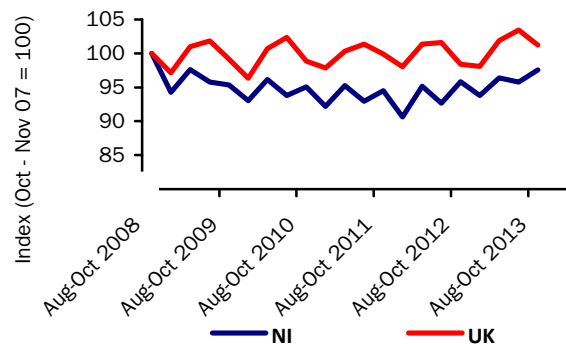


## Hours worked

In the three months to October 2013, the average actual weekly hours worked in NI was 33.8 hours – higher than the UK average (32.1) for the same period. For full-time workers, in Northern Ireland, the average actual number of hours worked was 38.4 and was above that for the UK (37.6). For part-time workers in Northern Ireland, the average actual numbers of hours worked stood at 17.8 hours whereas the respective figure stood at 15.8 hours in the UK.

## Index of average actual weekly hours worked, NI and UK

Figure 6



## Annual Survey of Hours and Earnings (ASHE)

Earnings results for April 2013, which were released on 12 December 2013, show that yearly growth in median gross weekly earnings for all employees (i.e. both full- and part-time) in NI was 1.7% (to £367), compared to the UK where earnings increased by 2.6% (to £417). NI full-time employees' gross weekly earnings at April 2013 were £460, which was 88.9% of the figure in the UK (£518). NI full-time earnings increased by 0.5% over the period, compared with an increase of 2.2% in the UK.

Full-time weekly private sector earnings in NI increased over the year by 2.3%, to £403. This represented no change to the NI/UK private sector pay gap which remains at 82.1% of the UK figure. Part-time private sector earnings grew 7.9% to £132.

# Labour Force Survey

## 2

### Background

The Labour Force Survey (LFS) is a sample survey carried out by interviewing individuals about their personal circumstances and work. It provides a rich source of information on the labour force using internationally agreed definitions. However, the estimates from it are subject to sampling error and care should be taken when making inferences from them (see section 9 for details).

### Labour Market Summary (seasonally adjusted)

The latest seasonally adjusted Labour Force Survey estimates for September - November 2013 (see Table 2) estimated the unemployment rate at 7.3% (63,000 persons), this increased by 1,000 from the previous quarter. The employment level increased by 6,000 over the quarter (804,000 persons).

### Labour Market change over the year

In the year to September - November 2013 (see Figure 7), LFS figures estimated that total employment remained unchanged, that unemployment decreased by 6,000, that numbers of economically active decreased by 5,000 (figures may not sum due to rounding). The number economically inactive increased by 15,000 over the year.

**Labour Market Structure  
Change over the year  
Figure 7**



### Employment

Latest seasonally adjusted estimates show that there were 804,000 persons in employment, which is unchanged over the year. Of the total, 53% (423,000) were male and 47% (381,000) were female.

Male employment rate increased by 0.7 percentage points over the year while the female rate decreased by 0.1 percentage points.

### Economic Inactivity

The number of economically inactive persons in the period September - November 2013 was estimated at 563,000. This figure includes those people that are past retirement age and are unlikely to re-engage with the labour market. Therefore it is the economically inactive of working age (i.e. those aged 16 – 64) that are of most interest to labour market analysts. In September - November 2013, there were an estimated 316,000 economically inactive people aged 16-64 in NI. Of the total, 39% (122,000) were male and 61% (194,000) were female.

**To provide a more detailed analysis, the results below are unadjusted for seasonality, unless otherwise stated.**

Unadjusted figures show that 82% of the economically inactive of working age do not want a job, while the remaining 18% want work, but are not actively seeking or available to start work.

### Economically Inactive of Working Age Reason for not wanting work

**Figure 8**

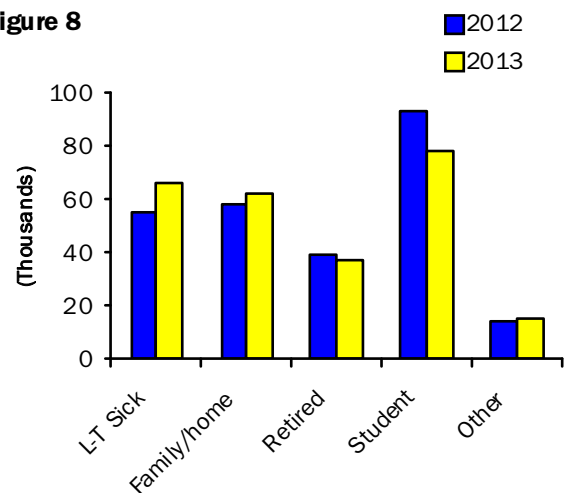


Figure 8 shows the reason given by these people for not wanting work. The largest categories were students (78,000), long-term sick (66,000) and those looking after family/home (62,000). Among these categories, the largest change over the year occurred for Students (15,000 or -15.8%).



## Labour Market Structure – Seasonally adjusted

Table 2

(Thousands/Percentage)

	Total aged 16 and over	Total persons of working age 16-64	All aged 16+				All working age 16-64		
			Total economically active	Total in employment	Unemployed	Economically inactive	Unemployment rate (%)	Activity rate 16-64 (%)	Employment rate (%) 16-64
	A	B	C	D	E	F	G	H	I
<b>ALL PERSONS</b>									
Sep-Nov 2010	1,397	1,149	832	766	66	565	7.9	70.9	65.2
Sep-Nov 2011	1,410	1,156	862	803	59	548	6.8	72.9	67.8
Sep-Nov 2012	1,421	1,160	873	804	69	548	7.9	73.1	67.2
Dec-Feb 2013	1,424	1,161	862	790	72	562	8.4	72.6	66.4
Mar-May 2013	1,427	1,162	867	800	68	559	7.8	72.5	66.7
Jun-Aug 2013	1,429	1,163	861	799	63	568	7.3	72.1	66.7
Sep-Nov 2013	1,431	1,163	868	804	63	563	7.3	72.8	67.4
<b>Change on Quarter</b>	<b>1</b>	<b>0</b>	<b>6</b>	<b>6</b>	<b>1</b>	<b>-5</b>	<b>0.0</b>	<b>0.7</b>	<b>0.7</b>
<b>Change on Year</b>	<b>9</b>	<b>3</b>	<b>-5</b>	<b>0</b>	<b>-6</b>	<b>15</b>	<b>-0.6</b>	<b>-0.2</b>	<b>0.3</b>
<b>MALES</b>									
Sep-Nov 2010	679	570	459	413	46	220	9.9	78.5	70.5
Sep-Nov 2011	686	573	461	422	40	224	8.6	78.6	71.7
Sep-Nov 2012	692	575	470	423	47	222	10.1	79.0	70.9
Dec-Feb 2013	694	576	465	415	50	228	10.7	78.8	70.2
Mar-May 2013	695	577	468	421	47	227	10.1	78.6	70.3
Jun-Aug 2013	696	577	468	424	44	228	9.4	79.1	71.5
<b>Sep-Nov 2013</b>	<b>697</b>	<b>578</b>	<b>465</b>	<b>423</b>	<b>42</b>	<b>232</b>	<b>9.1</b>	<b>78.8</b>	<b>71.6</b>
<b>FEMALES</b>									
Sep-Nov 2010	718	580	373	353	20	345	5.4	63.5	60.0
Sep-Nov 2011	724	583	400	382	19	324	4.7	67.2	64.0
Sep-Nov 2012	729	585	403	381	22	326	5.4	67.2	63.5
Dec-Feb 2013	730	585	396	374	22	334	5.6	66.5	62.7
Mar-May 2013	732	586	399	379	20	332	5.1	66.6	63.1
Jun-Aug 2013	733	586	393	375	19	339	4.8	65.2	62.0
<b>Sep-Nov 2013</b>	<b>733</b>	<b>586</b>	<b>403</b>	<b>381</b>	<b>21</b>	<b>330</b>	<b>5.3</b>	<b>66.9</b>	<b>63.3</b>

Relationship between columns: A=C+F; C=D+E; G=E/C, H=economically active of working age/total population of working age, I=in employment of working age/total population of working age, \* **A and B are underlying population estimates and are therefore not seasonally adjusted.**

The estimates above have been revised to incorporate latest population figures - see note on revisions policy in Section 9.

Working age rates based on 16-64 population for both males and females - see Section 9 for details.

Figures may not sum due to rounding. \* - sample too small for a reliable estimate.

## Labour Market Structure – Sample of data available on website

Table 3

Table Name	Description	File Size
2.1a	<u>Labour Market Structure - Seasonally Adjusted</u>	22KB
2.1b	<u>Labour Market Structure</u>	20KB
2.2	<u>Economic Activity by Age</u>	19KB
2.3	<u>Economic Activity Rates by Age</u>	19KB
2.4a	<u>Economically Inactive Who Want Work</u>	20KB
2.4b	<u>Economically Inactive Who Do Not Want Work</u>	18KB
2.5	<u>Economic Inactivity by Age</u>	18KB
2.6	<u>Employment by Category</u>	18KB
2.7	<u>Actual Weekly Hours of Work</u>	17KB
2.8	<u>Employment by Age</u>	18KB
2.9	<u>Unemployment by Age</u>	17KB
2.10	<u>Unemployment by Duration</u>	18KB
2.11	<u>International Comparisons of Employment and Unemployment</u>	23KB
2.12	<u>Comparisons of Working Age Rates</u>	
	<u>Notes and Definitions</u>	16KB

## Other Labour Force Survey Publications available on website

Table 4

Publication title	File Size
LFS Labour Market Statistics (September - November 2013)	98 KB
LFS Quarterly Supplement (July - September 2013)	341 KB
LFS Key Data Historical Series 1992 - 2011 (please enable macros)	1,161 KB
LFS Historical Data 1984 - 1991	76 KB
Women in Northern Ireland Publication September 2013	270 KB
Labour Force Survey (LFS) Local Area Database 2012	659KB
LFS Archive data	**

# Claimant Count

# 3

## Unadjusted Claimant Count

The claimant count in NI at December 2013 was 58,099 (6.4% of the workforce), a decrease of 1.2% (706) over the previous month. There was a decrease of 8.6% (5,476) over the year and the rate decreased by 0.6 percentage points. Five years ago the total was 35,816 (4.0%). (The seasonally adjusted claimant count decreased by 600 from the previous month's revised figure).

## Youth Claimants

A total of 14,782 under 25's (25.4% of all claimants) were claiming benefits in December 2013, representing a decrease of 4.0% (617 claimants) over the month and a decrease of 15.3% (2,676) over the year. Youth claimants represent 1.6% of the workforce.

## Long-term Claimants

At December 2013, 19,129 (32.9% of all claimants) were claiming benefit for a year or more, representing a decrease of 0.1% (26 claimants) over the month and an increase of 14.9% (2,484) over the year. Long-term claimants represent 2.1% of the workforce.

## Flows out from Job Seekers Allowance

The success rate of job seekers leaving the count to obtain employment in December 2013 increased by 1.4 percentage points since the same time last year. Of the 6,835 flows from the count in December 2013, 3,185 (46.6%) found employment, compared to 4,035 (45.2%) of the 8,925 claimants who left the count in December 2012. This compares to 38.8% three months ago and 37.9% six months ago.

In the period from December 2012 to December 2013 the highest proportion (46.6%) of persons leaving JSA to find employment is in December 2013, while in January 2013 the proportion finding employment was at its lowest (34.7%). The highest proportion (21.7%) of persons leaving JSA to enter education or training occurred in October 2013. Those who left JSA to claim other benefits varied between 3.4% and 4.8% in the period. Those who left JSA because they failed to sign peaked at 29.1% in January 2013.

## Flows on to Job Seekers Allowance

Of the 6,200 claimants who joined the count in December 2013, 35.0% were under 25, 28.5% were aged between 25-34 years, 15.7% were aged between 35-44 years, 13.7% were aged between 45-54 years and 7.1% were 55 and over. In December 2013, 4,370 males (70.5%) joined the count compared to 1,830 females (29.5%).

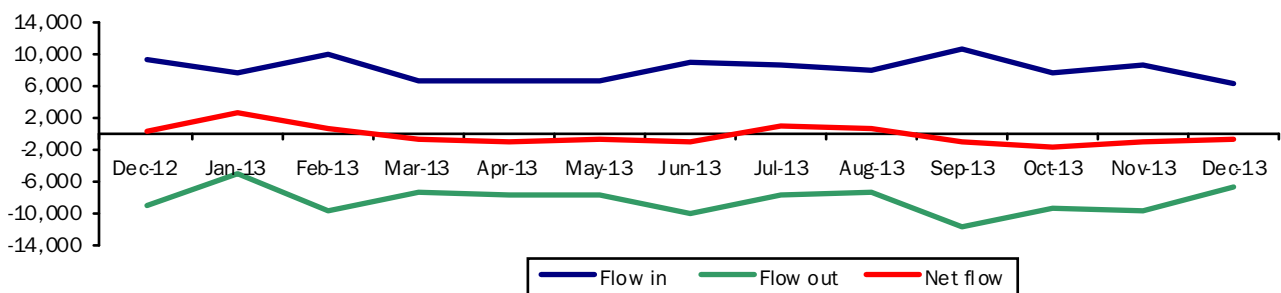
## Net Flow

There was a net flow of persons out from Job Seekers for 8 months and a net flow onto Job Seekers for 5 months between December 2012 and December 2013. Net flows off Jobseekers peaked in October 2013 with a net off-flow of 1,785 persons, while net flows onto Jobseekers peaked in January 2013 with a net on-flow of 2,510.

Further information on flows data is available in section 9.

## Flows in and out from JSA

Figure 9

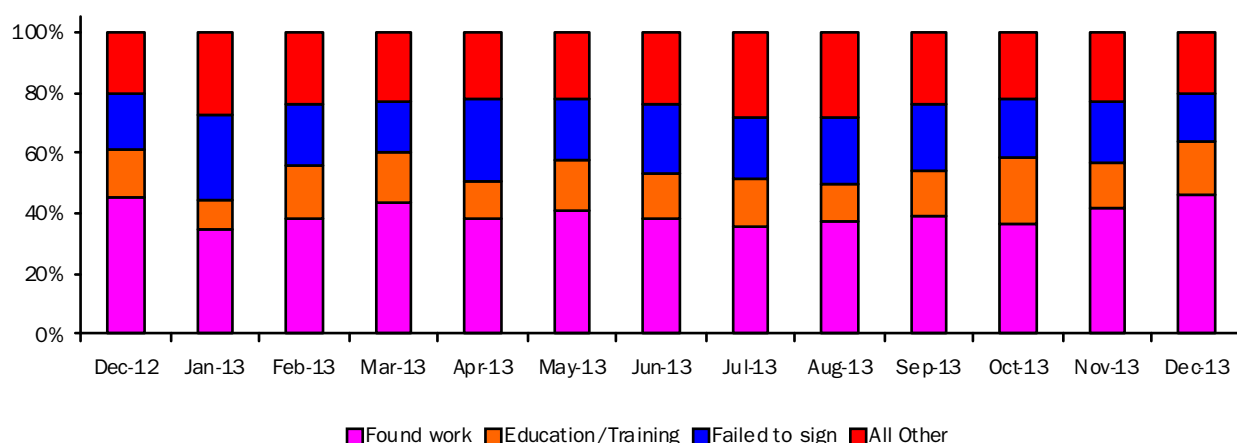


**Claimant Count by District Council Area – December 2013**  
**Number, Rate and % change over month and year (including jobs density indicator at 2011\*)**  
**Table 5**

District	Number of Claimants			% Of Working Age			Change over month		Change over Year		Jobs Density
	Males	Females	All	Males	Females	All	Number	%	Number	%	Indicator*
Antrim	834	371	1,205	4.9	2.2	3.5	-18	-1.5	-178	-12.9	0.96
Ards	1,454	597	2,051	6.0	2.4	4.2	-21	-1.0	-147	-6.7	0.42
Armagh	1,138	513	1,651	5.9	2.7	4.4	-13	-0.8	-217	-11.6	0.66
Ballymena	1,007	489	1,496	5.0	2.4	3.7	-56	-3.6	-207	-12.2	0.80
Ballymoney	642	272	914	6.4	2.7	4.6	-3	-0.3	-156	-14.6	0.47
Banbridge	798	319	1,117	5.1	2.1	3.6	-19	-1.7	-134	-10.7	0.44
Belfast	9,206	3,411	12,617	10.1	3.6	6.8	-183	-1.4	-1,041	-7.6	1.34
Carrickfergus	699	320	1,019	5.7	2.5	4.1	-61	-5.6	-198	-16.3	0.40
Castlereagh	912	350	1,262	4.4	1.6	2.9	-34	-2.6	-155	-10.9	0.69
Coleraine	1,242	541	1,783	6.8	2.8	4.8	0	0.0	-166	-8.5	0.73
Cookstown	634	339	973	5.2	2.8	4.0	5	0.5	-98	-9.2	0.63
Craigavon	2,006	928	2,934	6.6	3.1	4.8	-60	-2.0	-265	-8.3	0.73
Derry	4,091	1,786	5,877	11.8	4.9	8.3	-97	-1.6	-155	-2.6	0.70
Down	1,581	574	2,155	7.1	2.6	4.8	-8	-0.4	-291	-11.9	0.53
Dungannon	938	562	1,500	4.9	3.0	4.0	13	0.9	-134	-8.2	0.71
Fermanagh	1,307	570	1,877	6.6	2.9	4.8	-35	-1.8	-92	-4.7	0.68
Larne	615	235	850	6.1	2.3	4.2	-7	-0.8	-157	-15.6	0.53
Limavady	991	409	1,400	8.8	3.8	6.3	-7	-0.5	-200	-12.5	0.45
Lisburn	2,196	991	3,187	5.8	2.5	4.1	-32	-1.0	-357	-10.1	0.62
Magherafelt	772	364	1,136	5.2	2.5	3.9	-10	-0.9	-81	-6.7	0.59
Moyle	437	181	618	8.0	3.4	5.8	6	1.0	-129	-17.3	0.43
Newry & Mourne	2,331	947	3,278	7.2	3.0	5.1	24	0.7	-379	-10.4	0.62
Newtownabbey	1,414	571	1,985	5.4	2.0	3.6	-51	-2.5	-237	-10.7	0.64
North Down	1,175	516	1,691	4.9	2.0	3.4	-15	-0.9	-176	-9.4	0.52
Omagh	1,102	509	1,611	6.6	3.1	4.9	13	0.8	-103	-6.0	0.67
Strabane	1,313	599	1,912	10.3	4.7	7.5	-37	-1.9	-23	-1.2	0.51
<b>NI TOTAL</b>	<b>40,835</b>	<b>17,264</b>	<b>58,099</b>	<b>7.1</b>	<b>2.9</b>	<b>5.0</b>	<b>-706</b>	<b>-1.2</b>	<b>-5,476</b>	<b>-8.6</b>	<b>0.73</b>

\* Data relates to 2011. Jobs Density = total number of jobs in an area divided by the resident population of working age in the area

**Claimant spells ended by destination**  
**Figure 10**



**Occupation Data**

At December 2013, 33.3% (19,085) of all claimants defined their usual (or previous) occupation as an Elementary Occupation. Elementary Occupations includes elementary agricultural, construction, process plant, goods storage, administrative, personal services, cleaning, security and sales occupations. A further 16.4% (9,425) gave their usual occupation as working in Sales and Customer Service Occupations. These two groups account for approximately one half of all claimants in December 2013. The smallest occupation group, with 1.6% (910) of all claimants, was Managers and Senior Officials.

Overall the NI claimant count (computerised claims only) decreased by 1.3% over the month to December 2013. Eight of the nine occupational groups showed a decrease in levels, with the largest decrease occurring in Sales and Customer Services Occupations, which decreased by 255 (2.6%), followed by Elementary Occupations which decreased by 120 (0.6%). The only group showing an increase in levels was Process, Plant and Machine Operatives which increased by 5 (0.1%).

**Claimant Count (unadjusted) by Usual Occupation – December 2013 (Computerised claims only)**  
**Table 6**

Occupational Groups (Usual Occupation)	December 2013		Change over month	
	Number of Claimants	% of Claimants	Number of claimants	% change
Managers and Senior Officials	910	1.6	-30	-3.2
Professional Occupations	1,165	2.0	-55	-4.5
Associate Professional and Technical Occupations	2,575	4.5	-105	-3.9
Administrative and Secretarial Occupations	4,645	8.1	-55	-1.2
Skilled Trade Occupations	7,455	13.0	-10	-0.1
Personal Service Occupations	4,140	7.2	-115	-2.7
Sales and Customer Service Occupations	9,425	16.4	-255	-2.6
Process, Plant and Machine Operatives	7,870	13.7	5	0.1
Elementary Occupations	19,085	33.3	-120	-0.6
Not Known	55	0.1	5	10.0
<b>NI Total</b>	<b>57,330</b>	<b>100</b>	<b>-735</b>	<b>-1.3</b>

**Claimant Count -Sample of data available on website:**

**Table 7**

<b>Table Name</b>	<b>Description</b>	<b>File Size</b>
Table 3.1	<u>Seasonally Adjusted Claimant Count</u>	17.5KB
Table 3.2	<u>Total Claimant Count</u>	16.0KB
Table 3.3	<u>Claimant Count Trends – Seasonally Adjusted Claimant Count</u>	18.0KB
Table 3.4	<u>Claimant Count Trends – Total Claimant Count</u>	17.0KB
Table 3.5	<u>Claimant Count Trends – Long-Term Claimant Count</u>	16.0KB
Table 3.6	<u>Claimant Count Trends- Youth Claimant Count</u>	14.5KB
Table 3.7	<u>Claimant Count by Travel-to-Work-Area</u>	19.5KB
Table 3.8	<u>Claimant Count by District Council Area</u>	21.0KB
Table 3.9	<u>Claimant Count by Parliamentary Constituency Area</u>	20.0KB
Table 3.10	<u>Claimant Count by NUTSiii Area</u>	18.5KB
Table 3.11	<u>Claimant Count by Usual Occupation</u>	17.0KB
Table 3.12	<u>Outflows by Destination (including percentage recycled)</u>	21.5KB
Table 3.13	<u>Total Annual Outflows by Destination</u>	20.0KB
Table 3.14	<u>Total On Flows by District Council Area and Age</u>	19.0KB
Table 3.15	<u>Claimant Count by Ward</u>	81.0KB

# Redundancies

## 4

There were 2,011 confirmed redundancies over the year to 31<sup>st</sup> December 2013, a decrease of 40% compared to the same period in the previous year (3,353). Of these, 122 confirmed redundancies took place during the calendar month of December 2013 and 138 in the previous month of November 2013. This compares to 344 in December 2012 (one year ago).

Table 8 shows the distribution of these confirmed redundancies by District Council area. The largest number of redundancies occurred in Belfast (552), Lisburn (343) and Derry (187) District Council areas.

**Confirmed redundancies by District Council in year to 31<sup>st</sup> December 2013**  
**Table 8**

District Council Area	Total
Antrim	34
Ards	23
Armagh	11
Ballymena	47
Ballymoney	6
Banbridge	28
Belfast	552
Carrickfergus	9
Castlereagh	132
Coleraine	54
Cookstown	1
Craigavon	66
Derry	187
Down	39
Dungannon	4
Fermanagh	166
Larne	2
Limavady	118
Lisburn	343
Magherafelt	0
Moyle	0
Newry & Mourne	41
Newtownabbey	55
North Down	71
Omagh	22
Strabane	0
<b>N. Ireland</b>	<b>2,011</b>

Of these 2,011 confirmed redundancies, 595 or 30% were in the Wholesale and Retail sector, with 448 redundancies (22% of all redundancies) occurring in Retail Trade (except of motor vehicles and motor cycles). A further 62 redundancies (3% of all redundancies) occurred in the Construction sector.

Altogether there are 891 outstanding redundancies that have been notified, but have yet to take place. This compares with 1,133 this time one year ago – a decrease of 21%.

**Redundancies – Sample of Data Available on Website**  
**Table 9**

Regional Redundancy data	File size
<a href="#">District Council (Jan 2000 - date)</a>	33.0KB
<a href="#">Parliamentary Constituency (Jan 2000 - date)</a>	29.0KB
<a href="#">Travel-to-Work Area (Jan 2000 - date)</a>	29.0KB

Industrial Sector	File size
<a href="#">Standard Industrial Classification (Jan 2000 - date)</a>	70.0KB

### Redundancy Legal Requirements

Under the Employment Rights (Northern Ireland) Order 1996 (Amended 8 October 2006) companies are only legally required to notify the Department of impending redundancies of 20 or more employees. Companies who propose less than 20 redundancies are not included in the statistics.

# Quarterly Employment Survey

# 5

## Seasonally Adjusted

The September 2013 seasonally adjusted employee jobs figure stands at 703,020.

This represents an increase of 0.5% (or +3,290 jobs) from the revised June 2013 estimate of 699,720.

Over the quarter seasonally adjusted employee jobs increased across all sectors; in the Service sector by 0.4% (+2,200 jobs), in the Manufacturing Sector by 0.9% (+690 jobs), in the Construction sector by 1.1% (+320 jobs) and in the 'Other' industries sector by 0.4% (+80 jobs).

## Unadjusted

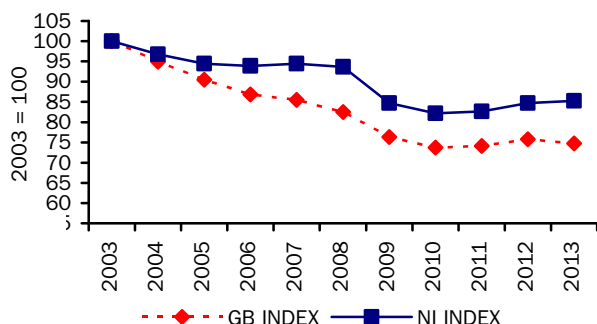
The September 2013 unadjusted employee jobs estimate stands at 700,710.

This represents an increase of 0.2% (+1,470 jobs) since June 2013 and an increase of 1.3% (+8,820 jobs) in the past year.

Over the year, September 2012 to September 2013, the Construction sector decreased by an estimated 4.2% (-1,300 jobs). The Manufacturing sector increased by an estimated 1.8% (+1,390 jobs), the Services sector also went up by 1.5% (+8,570 jobs) and the 'Other Industries' sector also increased by 0.7% (+150 jobs) over the same period.

## Manufacturing jobs for NI & GB indexed (June of each year\*)

Figure 11



\*GB data for September 2013 was not available at time of publication; therefore June 2013 data has been substituted for illustration purposes.

## Manufacturing Employee Jobs

The level of jobs in the Manufacturing sector in both NI and GB has declined over the past 10 years.

NI manufacturing jobs recorded a sharp decline between 2003 and 2006, falling to 94% of the 2003 figure. This increased slightly in 2007 before declining until 2010 to 82% of the June 2003 figure.

NI Manufacturing employee jobs figures then increased slightly through to 2013 standing at 85% of the June 2003 figure.

Manufacturing jobs in GB have been in sharp decline from 2003 until 2010 before increasing slightly in 2011 and 2012 and then declining again in 2013, the June 2013 estimate stands at 76% of the 2003 level.

## Changes in the Structure of Manufacturing Jobs (NI)

Over the period 2003-2013, Manufacturing jobs in NI decreased by 12,350, with 16 of the 23 manufacturing divisions recording a decrease. The largest decrease occurred in the Manufacture of textiles, which recorded 3,310 fewer jobs. There were 2,850 fewer jobs in the Manufacture of wearing apparel, 2,300 fewer in the Manufacture of computer, electronic and optical products, 1,590 fewer jobs in the Manufacture of other non-metallic mineral products and 1,360 fewer in the Manufacture of rubber and plastic products.

However, these decreases were partially offset by increases in the Manufacture of fabricated metal products, except machinery and equipment (+1,250 jobs) and in the Manufacture of basic pharmaceutical products and pharmaceutical preparations (+1,120 jobs) and in the Manufacture of food products (+940 jobs).

The large decline in the Manufacture of Textiles, Wearing Apparel and Leather Products sectors has impacted on the structure of Northern Ireland Manufacturing jobs. In 2003 9.7% of Manufacturing jobs were located in the Textiles, Wearing Apparel and Leather sectors; by 2013 this had fallen to 3.1%.



**Quarterly Employment Survey**  
**Northern Ireland Seasonally Adjusted Employee Jobs\* September 2013**

**Table 10**

				% change in total	
	Males	Females	All persons	since last quarter	since last year
Manufacturing	60,040	16,330	76,370	0.9	1.8
Construction <sup>1</sup>	25,740	3,980	29,720	1.1	-4.2
Services	234,320	341,920	576,230	0.4	1.5
Other <sup>2</sup>	17,700	2,990	20,700	0.4	0.7
<b>Total</b>	<b>337,800</b>	<b>365,220</b>	<b>703,020</b>	<b>0.5</b>	<b>1.2</b>

<sup>1</sup> Figures for females in the construction industry are not seasonally adjusted

<sup>2</sup> Covers Industry Sections A, B, D and E which have not been seasonally adjusted

\* Figures are rounded to the nearest 10 and may not sum due to rounding

**Northern Ireland Employee Jobs\* - Seasonally Adjusted Series**

**Table 11**

		Manufacturing	Construction <sup>1</sup>	Services	Other Industries <sup>2</sup>	All Industries	Public <sup>3</sup>	Private <sup>3</sup>
2006	March	84,090	41,790	559,330	21,390	706,610	220,610	485,830
	June	83,580	42,300	560,100	20,830	706,810	220,670	486,300
	September	83,870	42,690	562,580	20,910	710,060	221,030	489,340
	December	83,990	43,140	564,630	20,990	712,760	220,460	491,930
2007	March	83,870	43,460	567,160	21,050	715,550	220,250	495,180
	June	84,070	44,710	571,080	20,890	720,760	220,730	500,310
	September	83,940	45,320	575,090	21,070	725,420	219,370	506,240
	December	83,470	46,820	578,880	20,170	729,340	219,780	509,100
2008	March	83,750	45,860	582,950	20,150	732,690	219,880	512,820
	June	83,350	44,860	584,490	20,370	733,070	218,440	515,020
	September	82,220	43,500	581,240	20,440	727,400	216,100	511,290
	December	80,130	41,670	579,540	20,040	721,370	224,100	496,970
2009	March	78,230	39,420	577,730	19,960	715,340	224,460	490,920
	June	75,290	38,210	577,080	19,910	710,490	225,030	485,690
	September	74,010	36,780	577,450	19,800	708,030	225,390	482,510

**DISCONTINUITY IN SERIES – PLEASE SEE BELOW**

	December <sup>^</sup>	73,330	37,120	580,970	19,820	711,250	225,010	486,100
2010	March	73,150	36,960	579,810	19,850	709,760	223,560	486,340
	June	73,030	36,200	579,080	19,620	707,930	221,790	486,290
	September	72,930	35,790	576,250	19,800	704,770	219,630	484,920
	December	73,850	33,610	573,540	19,830	700,830	219,330	481,470
2011	March	73,690	33,370	573,340	19,850	700,250	216,810	480,510
	June	73,430	32,780	570,770	20,260	697,240	216,810	480,510
	September	73,750	32,930	569,060	20,000	695,750	215,340	480,150
	December	75,490	31,640	564,690	19,790	691,620	214,090	477,560
2012	March	74,820	31,480	565,630	19,810	691,750	214,430	477,490
	June	75,240	31,360	566,100	20,620	693,320	213,830	479,530
	September	74,990	31,020	567,840	20,540	694,390	214,030	480,070
	December	74,340	29,820	569,960	20,600	694,720	214,500	480,270
2013	March	74,470	29,630	570,840	20,500	695,440	214,680	480,880
	June	75,670	29,400	574,030	20,620	699,720	215,170	484,530
	September	76,370	29,720	576,230	20,700	703,020	215,130	487,640

<sup>1</sup> Figures for females in the construction industry are not seasonally adjusted

<sup>2</sup> Covers Industry Sections A, B, D and E which have not been seasonally adjusted

<sup>3</sup> Public and Private splits may not sum to total.

Due to revisions in the QES sampling methodology, a discontinuity in the jobs series exists for all estimates from Q3 2009 onwards. For more details please follow link: <http://www.detini.gov.uk/deti-stats-index/stats-surveys/stats-qes/stats-qes-discontinuity-notice.htm>

\* Figures are rounded to the nearest 10 and may not sum due to rounding

## Quarterly Employment Survey (QES) – Sample of data available on website

The Northern Ireland Quarterly Employment Survey  
Table 12

Table Name	Description	File Size
	Industry Split Tables	
5.1	<u>NI Employee Jobs - Seasonally Adjusted September 2013</u>	15.5 KB
5.2	<u>NI Employee Jobs - Seasonally Adjusted 1998 – 2013</u>	15.5 KB
5.3	<u>NI Employee Jobs - Unadjusted 1998 – 2013</u>	15.5 KB
5.4	<u>NI Employee Jobs (Unadjusted) by Industry Section – September 2013</u>	15.5 KB
5.5	<u>NI Employee Jobs by Industry Section (Unadjusted) September 2012, June 2013 and September 2013</u>	15.5 KB
5.6	<u>Self Employment Jobs in NI by Broad Industry Group (June of Each Year)</u>	15.0 KB
5.7	<u>Workforce in Employment 1983 – 2013</u>	15.0 KB
5.8	<u>NI Employee Jobs by 2-digit SIC07 Class – September 2013</u>	31.5 KB
	Public – Private Sector Tables	
5.9	<u>NI Public Sector Jobs (Unadjusted) - September 2013</u>	19.0 KB
5.10	NI Employee Jobs - Seasonally Adjusted (Public / Private) 1993 - 2013	27.0 KB
5.11	NI Employee Jobs - Unadjusted (Public / Private) 1993 - 2013	288.0 KB

Other Quarterly Employment Survey Publications available on website  
Table 13

Publication title	File Size
Quarterly Employment Survey (QES) Supplement – September 2013	493 KB

# Annual Survey of Hours and Earnings

## 6

The Annual Survey of Hours and Earnings (ASHE) provides information on employees' hourly, weekly and annual earnings by gender and working pattern. It has been designed by the Office for National Statistics and is carried out in Northern Ireland by NISRA statisticians. Both median and mean results are reported by ASHE, where the mean is the arithmetic average while the median is the value below which 50 per cent of employees fall. The median is often preferred for earnings data as it is influenced less by extreme values and because of the skewed distribution of earnings data.

The median gross weekly earnings for all (i.e. both full- and part-time) employees in NI in 2013 was £367, some 12.0% lower than the UK (£417). This represented a growth in NI median earnings for all employees of 1.7% over the year to April 2013, compared to the UK, where earnings increased by 2.6%.

NI full-time employees' median gross weekly earnings at April 2013 were £460, which was 88.9% of the figure in the UK (£518). NI full-time earnings increased by 0.5% over the period, compared to an increase of 2.2% in the UK. The median gross weekly part-time earnings in NI at April 2013 was £154, up 3.8% over the year compared with an increase of 3.1% in the UK (to £160).

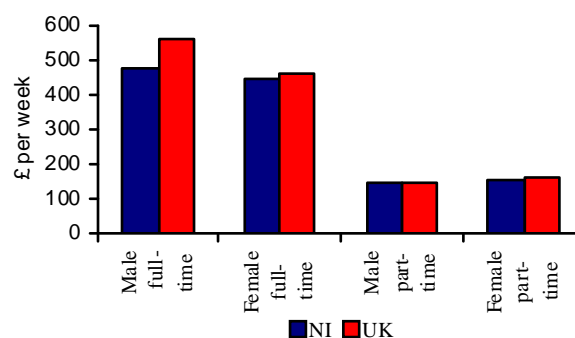
Median gross weekly earnings for full-time employees in the NI private sector increased at the same rate as the UK (2.3%) over the period, to £403 and £490 respectively. This represented no change to the NI/UK private sector pay gap which remains at 82.1% of the UK figure.

There has been a widening of the gender pay gap for all employees in NI over the period 2012-2013. Female median hourly earnings excluding overtime were 89.7% of male earnings at April 2013, compared to 90.6% a year earlier. The NI gender pay gap remains less marked than in the UK, where the equivalent female to male earnings ratio was 80.3% at April 2013. It should also be noted that gender pay differences continue to exist for various occupational and industry groupings in NI, as evidenced by weekly and annual earnings trends.

Please note, changes in NI earnings over the year and relative to the UK can be influenced by a range

of factors including the timing of pay settlements, the extent of overtime, and differences in the composition of the workforce. As ASHE is a sample survey, results are also subject to an associated level of sampling variability. Further information is available in section 12 of the ASHE publication: [Background notes for ASHE](#)

**Median gross weekly earnings by full-/part-time and gender, April 2013**  
**Figure 12**



**Median and mean gross weekly earnings 2009-13**  
**Table 14**

£ per week	Median			Mean		
	Full-time	Part-time	All	Full-time	Part-time	All
April 2013						
Men	477.4	145.1	429.9	567.6	185.7	504.1
Women	441.5	158.0	300.0	497.2	190.8	358.5
All	460.0	153.9	366.8	538.7	189.5	429.1
April 2012						
Men	477.7	138.8	420.0	558.9	172.0	492.2
Women	440.0	153.5	298.6	502.4	181.4	360.4
All	457.6	148.3	360.8	535.5	178.9	424.7
% Change 2012 - 13						
Men	-0.1	4.5	2.4	1.6	7.9	2.4
Women	0.3	2.9	0.5	-1.1	5.2	-0.5
All	0.5	3.8	1.7	0.6	6.0	1.0
April 2011						
Men	461.8	139.2	412.7	557.9	179.2	496.1
Women	417.9	154.4	300.0	480.4	182.9	352.1
All	444.7	150.5	354.5	526.1	181.9	423.2
April 2010						
Men	455.6	132.4	410.8	537.1	191.2	487.8
Women	409.4	152.2	297.7	469.9	180.7	347.4
All	437.3	149.1	354.7	509.6	183.3	416.6
April 2009						
Men	460.0	150.0	416.6	543.6	190.1	498.5
Women	402.6	161.4	297.2	460.6	187.7	350.4
All	437.1	159.1	354.6	509.1	188.3	422.9

**Average full-time earnings by occupation, April 2013, based on the 2010 Standard Occupational Classification (SOC2010)**

**Table 15**

	Count (thousands)	Median gross weekly pay (£)	Mean gross weekly pay (£)	Median total weekly hours	Mean total weekly hours
Managers, Directors and Senior Officials	47	686.0	795.8	38.2	38.9
Professional Occupations	115	697.9	721.7	37.5	37.3
Associate Professional and Technical Occupations	55	535.2	566.8	38.8	40.0
Administrative and Secretarial Occupations	62	388.9	414.7	37.5	38.7
Skilled Trades Occupations	50	431.2	470.6	40.0	42.2
Caring, Leisure and Other Service Occupations	27	309.3	336.4	37.5	39.5
Sales and Customer Service Occupations	26	286.1	314.6	38.8	39.1
Process, Plant and Machine Operatives	49	388.0	416.3	40.5	43.1
Elementary Occupations	33	316.2	340.3	39.8	40.6

**Average full-time earnings by industry, April 2013, based on the 2007 UK Standard Industrial Classification (SIC 2007)**

**Table 16**

	Count (thousands)	Median gross weekly pay (£)	Mean gross weekly pay (£)	Median total weekly hours	Mean total weekly hours
Agriculture, forestry and fishing	x	x	x	40.0	43.6
Mining and quarrying	x	x	x	40.5	45.9
Manufacturing	69	460.1	536.5	40.0	41.1
Electricity, gas, steam, and air conditioning supply	x	858.8	881.3	37.0	39.6
Water supply; sewerage, waste management and remediation activities	5	452.7	527.2	42.0	43.6
Construction	18	447.9	509.5	40.0	41.4
Wholesale and retail trade; repair of motor vehicles and motorcycles	57	344.3	428.3	39.3	39.3
Transportation and storage	17	441.3	531.9	40.2	43.6
Accommodation and food service activities	14	268.5	322.8	37.3	38.5
Information and communication	15	558.4	626.9	37.5	39.9
Financial and insurance activities	11	557.0	669.1	35.0	36.1
Real estate activities	6	434.4	457.3	37.0	38.2
Professional, scientific and technical activities	19	479.2	533.3	37.5	38.4
Administrative and support service activities	19	374.5	427.3	40.0	42.3
Public administration and defence; compulsory social security	41	519.2	573.0	42.0	42.3
Education	51	696.6	657.6	32.4	34.2
Human health and social work activities	75	501.0	569.2	37.5	38.8
Arts, entertainment and recreation	7	380.8	453.7	37.5	39.1
Other service activities	7	x	493.8	37.0	37.5
Activities of households as employers; undifferentiated goods and services-producing activities of households for own use	x	x	x	x	x

x Coefficient of Variation too large to provide a reliable estimate.

Please note that the figures in the above two tables relating to numbers employed relate to PAYE employees as defined by ASHE and should not be considered an accurate estimate of employee job counts.

**Sample of ASHE data available on website**

**Table 17**

Table name	Description	File size
6.1	<u><b>ASHE 2004 Headline Data for Key Variables (excluding supplementary information)</b></u>	51 KB
6.2	<u><b>ASHE 2004 Headline Data for Key Variables (including supplementary information)</b></u>	52 KB
6.3	<u><b>ASHE 2005 Headline Data for Key Variables</b></u>	52 KB
6.4	<u><b>ASHE 2006 Headline Data for Key Variables (consistent with 2005 methodology)</b></u>	168 KB
6.5	<u><b>ASHE 2006 Headline Data for Key Variables (consistent with 2007 methodology)</b></u>	176 KB
6.6	<u><b>ASHE 2007 Headline Data for Key Variables</b></u>	165 KB
6.7	<u><b>ASHE 2008 Headline Data for Key Variables</b></u>	165 KB
6.8	<u><b>ASHE 2009 Headline Data for Key Variables</b></u>	52 KB
6.9	<u><b>ASHE 2010 Headline Data for Key Variables (SOC2000 basis)</b></u>	54KB
6.10	<u><b>ASHE 2011 Headline Data for Key Variables (SOC2010 basis)</b></u>	64KB
6.11	<u><b>ASHE 2012 Headline Data for Key Variables (SOC2010 basis, revised)</b></u>	52KB
6.12	<u><b>ASHE 2013 Headline Data for Key Variables (SOC2010 basis, provisional)</b></u>	52KB

# Vacancy Statistics and Employment & Training

## 7

Due to improved data validation and cleansing, the way we publish information is changing. Data will now only be published in this report following publication on the DEL website <http://www.delni.gov.uk/index/statsandresearch.htm>. Information in Table 18 relating to Steps to Work and Training for Success will only be updated on a quarterly basis. The next Steps to Work Factsheet will be published on 19<sup>th</sup> March 2014 and the next Training for Success Bulletin will be published on 26<sup>th</sup> February 2014. The information in Table 19 is currently published annually; it is planned that the next Vacancies Bulletin will be published in August 2014.

### Employment & Training Measures

#### Participation in the Department for Employment and Learning Schemes to November 2013

Table 18

	Steps to Work (2)	New Deal (2, 3)	Future Managers	Employment Support	Training for Success (4)
<u>2011</u>					
Nov	16,300	250	150	650	20,050
<u>2012</u>					
Nov	15,050	0	150	600	18,350
Dec	14,300	0	150	600	18,000
<u>2013</u>					
Jan	14,850	0	100	600	17,600
Feb	15,050	0	100	600	16,900
Mar	15,500	0	100	600	16,300
Apr	15,800	0	100	600	15,750
May	15,900	0	100	600	15,100
June	15,600	0	100	600	14,250
July	15,100	0	150	550	13,650
Aug	14,800	0	100	550	-
Sept	15,300	0	150	550	-
Oct	-	0	150	550	-
Nov	-	0	150	550	-

**Figures in the above table are not National Statistics.**

(1) Figures are rounded to the nearest fifty.

(2) On 29th September 2008, Steps to Work was widely introduced in NI and subsumed the main New Deal programmes. However, Steps to Work was not introduced in the Foyle and Lisnagelvin office areas until 25th July 2011. Figures relate to the last Friday of each month and are revised on a quarterly basis. A data cleansing exercise in August and September 2012 has resulted in changes to previously published data. Statistics for October and November 2013 will be published in April 2014.

(3) Includes New Deal 18-24 and 25+. New Deal figures relate to the last Sunday of each month and are revised on a monthly basis.

(4) Training for Success (TfS), was introduced in September 2007 and replaced the Jobskills programme. In September 2008, TfS was restructured into two separate provisions, TfS and ApprenticeshipsNI (AppsNI). Programme-Led Apprenticeships (PLA) were introduced from 7th September 2009 as an intervention measure to respond to the economic downturn. The figures presented in this table under the TfS heading include AppsNI, PLA and TfS. Figures relate to the last Friday of the month and are revised on a quarterly basis. Statistics for August, September and October 2013 will be published in March 2014 and statistics for November 2013 will be published in June 2014.

## Vacancies Data

The information in Table 19 was first published in the Vacancies Bulletin on 28th August 2013. After a quality assurance exercise carried out within the Department for Employment and Learning errors were discovered. These errors have now been corrected. For a full description of the revisions made please see the 'Description of Revisions' document available at [www.delni.gov.uk/vacancies-statistics-2013](http://www.delni.gov.uk/vacancies-statistics-2013).

Headline figures are presented for vacancies which have been notified to JobCentres / Jobs & Benefits offices (J&Bo) of the Department for Employment and Learning (DEL). A small proportion of vacancies notified are based in the UK mainland or in the Republic of Ireland. The statistics do not represent the total unsatisfied demand for staff by employers, but are only those vacant positions notified by employers to DEL. Vacancy inflow and outflow figures are shown on a standardised basis, where values are converted to a standard 4 1/3 week period.

## Standardised Notified Vacancies (Inflow)

There were 4,419 vacancies notified in the period ending 7<sup>th</sup> June 2013. This was 6% lower than the number of vacancies notified in June 2012 (4,677) and an increase of 13.5% on the number of vacancies notified in June 2011 (3,894).

## Standardised Filled and Cancelled Vacancies (Outflows)

The number of filled and cancelled vacancies in the period ending 7<sup>th</sup> June 2013 was 5,698. This was an increase of 30% from June 2012 (4,393) and an increase of 45% from June 2011 (3,924).

## Unfilled Vacancies

A total of 6,943 vacancies remained unfilled on 7<sup>th</sup> June 2013, an increase of 6% on the unfilled total in June 2012 (6,536) and an increase of 45% on the amount unfilled in June 2011 (4,799). On 7<sup>th</sup> June 2013, the number of unfilled vacancies available to jobseekers was 2,380, a decrease of 12% on June 2012 (2,707) and an increase of 44% on June 2011 (1,653).

**Vacancies Notified, Outflow and Vacancies Unfilled: June 2011 to June 2013**  
**Table 19**

Report Period Ending		Notified Vacancies (Inflows) (1)			Filled and Cancelled Vacancies (Outflows) (2)			Unfilled Vacancies (3)			
		Level Unadjusted (4)	Level (standardised) (5)	Change on same month in previous year (6)	Level unadjusted (4)	Level (standardised) (5)	Change on same month in previous year (6)	Level Unadjusted	Change on same month in previous year	Of which live	Change on same month in previous year
2011	03-Jun	3,594	3,894	-25%	3,622	3,924	-18%	4,799	-25%	1,653	-31%
2012	08-Jun	5,396	4,677	20%	5,069	4,393	12%	6,536	36%	2,707	64%
	06-Jul	4,337	4,698	34%	4,493	4,867	41%	6,380	32%	2,374	57%
	03-Aug	4,237	4,590	33%	4,278	4,635	30%	6,339	33%	2,838	63%
	07-Sep	6,306	5,465	5%	5,174	4,484	20%	7,471	22%	3,163	41%
	05-Oct	6,012	6,513	23%	4,963	5,377	22%	8,520	19%	3,673	42%
	02-Nov	4,689	5,080	-4%	5,092	5,516	6%	8,117	13%	3,198	5%
	07-Dec	4,945	4,286	16%	6,323	5,480	6%	6,739	15%	2,276	33%
2013	04-Jan	2,390	2,589	14%	3,969	4,300	3%	5,160	42%	1,946	43%
	08-Feb	5,706	4,945	17%	4,762	4,127	21%	6,104	39%	2,985	48%
	08-Mar	4,391	4,757	20%	3,845	4,165	40%	6,650	25%	2,666	19%
	05-Apr	5,690	6,164	28%	3,941	4,269	5%	8,399	35%	2,295	-16%
	03-May	4,957	5,370	16%	4,937	5,348	15%	8,419	36%	2,909	9%
	07-Jun	5,099	4,419	-6%	6,575	5,698	30%	6,943	6%	2,380	-12%

Figures in the above table are not National Statistics.

(1) Notified vacancies (inflow) are all vacancy positions notified and added to JobCentres / J&Bos of DEL.

(2) Outflows are those vacancies that have been notified to JobCentres / J&Bos of DEL and have been filled or cancelled. This includes vacancies filled by JobCentres / J&Bos or other recruitment channels and vacancies that have been withdrawn.

(3) Unfilled vacancies are those vacancies notified to JobCentres / J&Bos of DEL remaining unfilled on the count date (the first Friday after the first Thursday of every month). Unfilled vacancies can be split into live and pended. Live vacancies are those for which job seekers can apply. Vacancies are pended while DEL staff await feedback from employers.

(4) Monthly flow data is collected for a 4 or 5 week period between count dates. Unadjusted levels reflect either a 4 or 5 week period.

(5) Standardised levels convert volumes to a standard 4 1/3 week month. Figures are not seasonally adjusted.

(6) Percentage change calculated using non-rounded standardised figures.

For further details of Vacancy Statistics and Employment and Training Measures visit the DEL website at the following link:

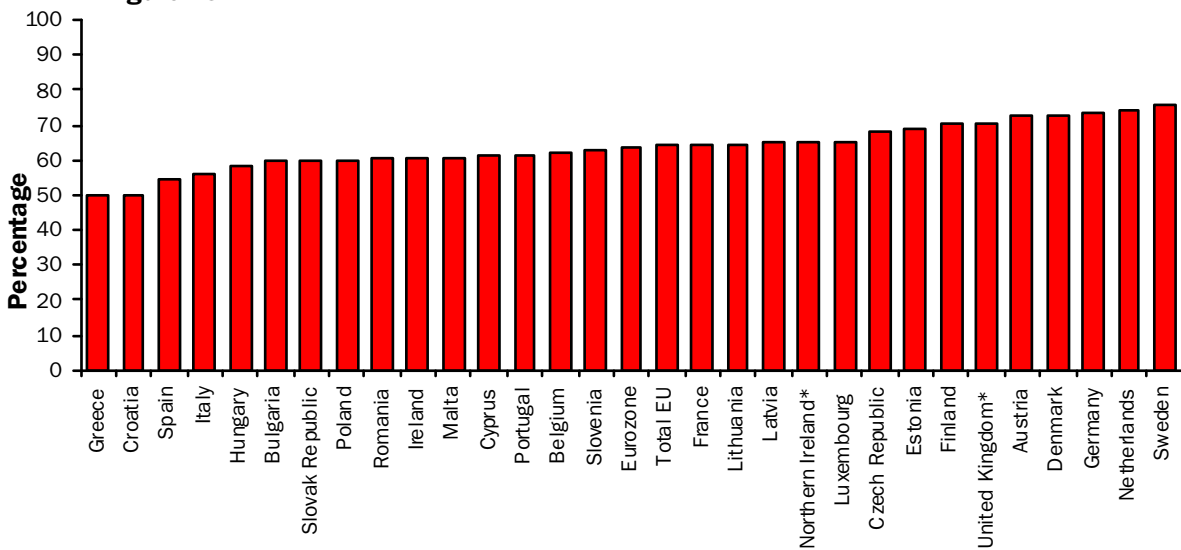
<http://www.delni.gov.uk/index/statsandresearch.htm> or alternatively contact the Department for Employment and Learning (DEL) by telephoning (028) 9025 7609.

# International - Regional Analysis

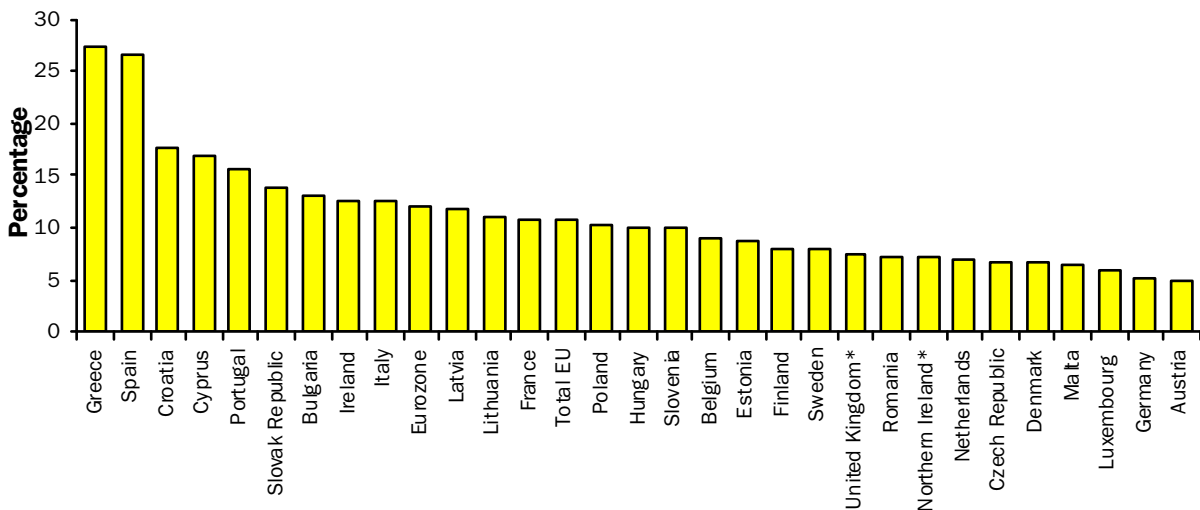


## International Comparisons of ILO Employment and Unemployment

**ILO Employment Rates (%) - Unadjusted**  
Figure 13



**Unemployment Rates (%) - Seasonally Adjusted**  
Figure 14



**Source: Eurostat**

\* A NI employment rate comparable to the EUROSTAT figures has been produced from the Calendar Quarter 2 2013 LFS dataset. It is based on the population aged 15-64 and differs from the working age rates published elsewhere in this publication, which take account of both the school-leaving and state pension age. The employment rate for the UK as published by EUROSTAT differs from the working age rate (16-64) published by ONS for the same reason. Figures behind the charts and further information can be found at; [International Comparisons of Employment](#)



**Seasonally Adjusted Regional Summary, September - November 2013**
**Table 20**

	Labour Force Survey (LFS) <sup>1</sup>						Employee Jobs <sup>3</sup>	Claimant count rate (%) <sup>4</sup>	Claimant count level Percentage Change over the year	Claimant count level Percentage Change over the month	Jobs Density Indicator <sup>5</sup>
	Employment		Unemployment		Economically Inactive						
	Rate	Annual Change <sup>2</sup>	Rate	Annual Change <sup>2</sup>	Rate	Annual Change <sup>2</sup>					
North East	67.6	-0.6	10.3	1.1	24.5	-0.4	1,037	6.0	-21.3	-2.4	0.67
North West	68.8	-0.9	7.9	-0.6	25.1	1.4	3,049	4.4	-20.4	-1.5	0.74
Yorkshire & the Humber	71.6	1.1	8.4	-0.4	21.7	-0.8	2,247	4.9	-18.3	-2.1	0.74
East Midlands	72.6	1.2	6.4	-1.8	22.3	0.2	1,948	3.6	-21.4	-1.2	0.75
West Midlands	69.9	-0.5	8.1	-0.8	23.7	1.2	2,353	4.7	-17.7	-1.5	0.74
East of England	75.5	0.5	5.7	-1.0	19.9	0.3	2,439	2.9	-22.2	-2.2	0.76
London	71.4	1.5	8.1	-0.2	22.2	-1.4	4,573	3.3	-21.7	-2.5	0.88
South East	76.1	1.2	5.3	-1.1	19.5	-0.3	3,915	2.2	-23.8	-2.5	0.80
South West	74.2	-0.5	6.8	1.4	20.3	-0.5	2,354	2.4	-21.9	-2.2	0.82
England	72.3	0.5	7.2	-0.5	21.9	-0.1	23,915	3.6	-20.8	-2.0	0.78
Wales	71.1	2.5	7.2	-1.2	23.2	-1.7	1,190	4.5	-16.7	-1.7	0.70
Scotland	72.7	2.0	6.4	-1.3	22.1	-1.2	2,343	4.0	-17.5	-1.6	0.77
Great Britain	72.3	0.7	7.1	-0.6	22.0	-0.3	27,448	3.6	-20.3	-1.9	0.78
N Ireland	67.4	0.3	7.3	-0.6	27.2	0.2	700	6.6	-8.2	-1.0	0.73
United Kingdom	72.1	0.7	7.1	-0.6	22.2	-0.2	28,145	3.7	-19.8	-1.9	0.78

<sup>1</sup> Employment and economic inactivity rates are based on working age population (16-64); Unemployment rates are based on 16+ population.

<sup>2</sup> Data refer to percentage point change of respective rate.

<sup>3</sup> As at June 2013 (thousands).

<sup>4</sup> As at December 2013: percentage of the workforce.

<sup>5</sup> Not seasonally adjusted – data relates to 2011. Jobs Density – total number of jobs in an area divided by the resident population of working age in that area.

# Further Information

## 9

### Unemployment

The definition of unemployment used in the Labour Force Survey (LFS) is in accordance with that promulgated by the International Labour Organisation (ILO). The ILO unemployed include those without a job who were able to start work in the two weeks following their LFS interview and had either looked for work in the four weeks prior to interview or were waiting to start a job they had already obtained.

Unemployment rate - the percentage of economically active people who are unemployed. Please note that it is possible for the number of unemployed to increase and the unemployment rate to fall during the same period, as the latter measure is a ratio e.g. if the number of economically active has increased at a faster rate than the number unemployed, the unemployment rate will fall.

### Employment

The definition of ILO employed applies to anyone (aged 16 or over) who has done at least one hour's paid work in the week prior to interview, or has a job they are temporarily away from (e.g. on holiday). Also included are people who do unpaid work in a family business and people on Government-supported employment training schemes.

The ILO measures are particularly useful for examining short term and long term trends over time and key LFS time series data are available both seasonally adjusted and unadjusted.

### Sampling variability

The LFS is a sample survey, and as such, estimates obtained from it are subject to sampling variability. If we drew many samples each would give a different result. The ranges shown for the LFS data in table 1 represent 95% confidence intervals i.e. we would expect that in 95% of samples the range would contain the true value. These confidence intervals have been calculated using data that is unadjusted for seasonality, with the relevant sampling errors produced applied to the seasonally adjusted data.

If the 'annual change' for an estimate has increased or decreased by more than the 'sampling variability of the change', this change would be statistically significant. The annual changes for the main LFS categories of employment,

unemployment and economic inactivity were tested for statistical significance. The results showed that none of the annual changes, for September - November 2013, were statistically significant over the year, i.e. the recorded change did not exceed the variability expected from a sample survey of this size and was likely to reflect a real change.

Please see attached link for further LFS notes and definitions:

[Labour Force Survey Notes and Definitions](#)

### LFS revisions

In April - June 2012 the LFS data was revised to incorporate the latest population estimates, the revisions apply to June - August 2009 onwards. The magnitude of the revisions are relatively small, with the revisions to the unemployment rate falling within +/- 0.1 percentage points and the working age employment rate within +/- 0.2 percentage points. The procedures being applied to the NI LFS results are consistent with those applied by the Office for National Statistics to other UK regions

More information on the revision policy concerning labour market statistics can be found through the link below:

[Labour market statistics revisions policy](#)

### Definition of 'working age'

The 'working age' definition, used in the calculation of employment and economic inactivity rates, was changed in August 2010 to include those aged from 16 to 64 for both men and women. Previously these rates were based on upper age limits of 59 for women and 64 for men, reflecting the state pension ages in the UK.

The change in definition follows a UK wide public consultation on the issue and the approach being applied to Northern Ireland labour market statistics mirrors the approach that the Office for National Statistics (ONS) are applying to other UK regions.

Please see link for further details:

[Change in female state pension age](#)

For a limited period, employment and economic inactivity rates based on the old working age definition (i.e. 16-59/64) will be available on the DETI website at: [Comparison of working age rates](#).

Please note that there are no implications for the headline unemployment rate, which will continue to be based on the economically active population aged 16 and over.

### **Hours Worked**

Due to current resource pressures, the Office for National Statistics (ONS) has discontinued the publication of the Regional Workforce Hours data series. The Hours worked section now details data on the average actual hours worked as estimated by the LFS.

### **Claimant Count definition**

Claimant Count figures are derived from records of claimants held at Jobs and Benefits Offices. The term 'claimants' in the claimant count is used to include those who claim Jobseeker's Allowance (JSA) and National Insurance credits. The figures include severely disabled claimants, but exclude students seeking vacation work and the temporarily stopped. The Claimant Count is a very up-to-date measure of those eligible to claim a specific unemployment related benefit and data are available for a range of geographical sub-regions (e.g. District Council Areas, Parliamentary Constituency Areas, Travel-to-Work Areas and Wards). It also provides seasonally adjusted and unadjusted data and as a result is a useful measure for examining both short-term and long-term trends.

Seasonally Adjusted claimant count figures are provisional when published and subject to revision, mainly the following month and are only available at Northern Ireland level. Seasonally Adjusted totals are subject to an annual update, which revises back for 3 years (usually April) to take account of latest assessment trends. The magnitudes of the revisions are relatively small, with the change of the monthly total claimants within +/- 0.8%. For further information see: [Claimant Count Seasonally Adjusted Revisions 2012-13](#)

The 'Flows' data contained in section three is sourced to the Official of National Statistics (via the NOMIS website). Claimants appear as flows if they have either joined or left the count in the reference period or if they joined the count in a previous period, but were only processed during the reference period.

### **Universal Credit**

In November 2010 the government announced plans to reform the welfare system by creating a new Universal Credit. The new benefit will replace many of the current separate welfare benefits, as well as subsuming in-work support currently administered through tax credits. Among those benefits to be replaced is the means-tested element of Jobseeker's Allowance (JSA) which makes up a significant proportion of the monthly Claimant Count.

Universal Credit will progressively roll out from October 2013 in GB (April 2014 in NI) and Initially new claimants will begin to move to Universal Credit instead of Jobseeker's Allowance, with a migration of the existing caseload and recipients of other welfare benefits following at a later date. ONS aims to include these new Universal Credit claimants in the Claimant Count in line with the proposals laid out in its recent:

[Consultation on the production and dissemination of Claimant Count statistics following the introduction of Universal Credit.](#)

Further details will be available nearer the time.

### **Annual Survey of Hours and Earnings**

Please note, changes in NI earnings over the year and relative to the UK can be influenced by a range of factors including the timing of pay settlements, the extent of overtime, and differences in the composition of the workforce. As ASHE is a sample survey, results are also subject to an associated level of sampling variability. Further information is available at:

[ASHE statistical bulletin](#)

[Definitions for the Annual Survey of Hours and Earnings ASHE](#)

### **Quarterly Employment Survey (QES) Revisions**

QES estimates are revised quarterly to reflect the latest information provided to the Department by employers. The June 2013 estimate first published in September 2013 has subsequently been revised up (0.2%). For further details of QES revisions please see link below.

[Background notes to the Quarterly Employment Survey \(QES\)](#)

### **Government Targets**

Data from the Labour Force Survey (LFS) and the Quarterly Employment Survey (QES) are used in the measurement of targets set in the Northern Ireland Executive's Programme for Government (PSA targets) See [Programme for Government](#) for further details. The LFS and QES data feed into productivity estimates for NI and are therefore indirectly used to measure progress towards PSA 1: Productivity growth. In addition, LFS data is used to measure the proportion of the working age population qualified to Skill levels 2 and 3. This data therefore feeds into the measurement of PSA 2: Skills for prosperity.

Details of progress towards these targets can be found at:

[Programme for Government Delivery Report](#)

### **For further information:**

**AN ELECTRONIC VERSION OF THIS DOCUMENT WITH ASSOCIATED HYPERLINKS IS AVAILABLE ON THE HOME PAGE OF THE BRANCH WEBSITE AT:**

[www.statistics.detini.gov.uk](http://www.statistics.detini.gov.uk)

You can also contact Economic & Labour Market Statistics Branch by: -

### **Writing to:**

Andrew Mawhinney  
Economic & Labour Market Statistics Branch,  
Room 110, Netherleigh, Massey Avenue, Belfast  
BT4 2JP.

Tel: (028) 9052 9668

Fax: (028) 9052 9658

Textphone: (028) 9052 9304

Email: [statistics@detini.gov.uk](mailto:statistics@detini.gov.uk)