

# **2011 Northern Ireland Census - Outputs Information Roadshows**

**4 & 7 March 2013**

## **Report from NISRA**

### **Introduction**

As part of its ongoing user consultation, the Northern Ireland Statistics & Research Agency (NISRA) organised two Information Roadshows to discuss outputs from the 2011 Census.

The purpose of the events was to:

- provide an update on the 2011 Census outputs;
- review the results so far;
- describe how the results can be accessed through [NINIS](#);
- discuss future outputs and the release timetable; and
- seek feedback from our Census Users.

As with previous events of this nature, DFP Minister, MLAs and leaders of the Northern Ireland political parties were notified about the events, in accordance with Government guidelines.

NISRA would like to thank all those who attended the two Outputs Information Roadshows. There were 36 attendees in Belfast and 16 attendees in Omagh.

All of the slides for the event are available on the [NISRA website](#).

The purpose of this document is to outline how users responded to the event evaluation questions (see Annexes A and B) and summarise the main points raised by users at the roadshows along with the Census Office response.

### **Summary of questions and responses (Belfast – 4 March 2013)**

*B Duffin (Northern Ireland Housing Executive)*

*Q: Will the Mid-Year Population Estimates (MYPE) be re-calibrated?*

Census Response: Yes they will. While specific details could not be provided at the events, the details are as follows.

2001-2011 rebased MYEs (i.e. revised to take into account 2011 census results) at NI level were published on 30<sup>th</sup> April see <http://www.nisra.gov.uk/demography/default.asp17.htm>

2001-2011 rebased figures at LGD level were published on 26<sup>th</sup> June see <http://www.nisra.gov.uk/demography/default.asp42.htm>

2012 MYEs for NI and LGD were also published on this date see <http://www.nisra.gov.uk/demography/default.asp17.htm>

2012 based NI projections are due to be published by ONS in Autumn 2013. NISRA then to publish sub-NI population projections in Spring 2014.

Our Publication schedule is published on NISRA website <http://www.nisra.gov.uk/demography/default.asp.htm>

*B Duffin (Northern Ireland Housing Executive)*

*Q: What about the Household Projections?*

Census Response: NISRA was previously commissioned to undertake the household projections that have been published and consider that the work was very valuable and provided robust estimates. NISRA have recently been in contact with the NIHE and plan to write to the NIHE and DRD later in the year.

*J Hayes (Economic and Social Research Council)*

*Q: Will the Address Register (AR) be maintained?*

Census Response: Land Property Service (LPS) have responsibility for the development and management of the NI address register (known as POINTER). Census Office took a snapshot of the address register prior to the Census and worked collaboratively with LPS and other business partners (including representatives on the POINTER stakeholder forum, other NISRA branches who use and had experience of POINTER, The Electoral Office, District Councils and Royal Mail) to ensure that the address register that was deployed for the 2011 Census enumeration was fit for Census purpose. Work of this nature was ongoing through the 2007 Census Test and 2009 Census Rehearsal and included 'on-the-ground' address checking and detailed desk validation work, using a variety of alternative administrative data sources and matching algorithms, to improve the overall quality of the address register. While all of the intelligence gathered during this phase of the collaborative work was able to be utilised in the ongoing POINTER development work, the Census Legislation does not permit Census Office to pass back any intelligence about individual addresses that became evident during the live field operation. NISRA will however make any relevant evaluation reports available to LPS and explore what aggregate statistics might be useful to LPS.

*E Wilmot (Health and Social Care Northern Ireland)*

*Q: When will Central Postcode Directory (CPD) be available and what work is being done to resolve differences between the CPD and the POINTER database, for example in deprived areas and at ward level.*

Census Response: NISRA are responsible for maintaining and issuing the CPD and are aware that, in some instances, postcode boundaries span across more than one Small Area (SA) boundary. This is highlighted in the supporting documentation that is distributed along with the CPD, which invites users to highlight any potential discrepancies with the CPD for NISRA's consideration. The documentation also highlights that while NISRA endeavours to ensure the CPD is as accurate as possible, NISRA can give no guarantee to the accuracy or completeness of the data presented.

<http://www.nisra.gov.uk/geography/postcode.htm>

*J Hayes (Economic and Social Research Council)*

*Q: When will estimates for population and household counts at postcode level become available?*

Census Response: Census Office has still to complete its quality assurance of the postcode data. This work is resource intensive and will be undertaken as and when the outputs production timetable permits. It is hoped that the necessary work can be progressed before the end of the financial year (2013/2014), thus ensuring that the data is released in a similar timescale to that following the 2001 Census.

*E Montgomery (Northern Ireland Statistics and Research Agency)*

*Q: When will there be an Urban/Rural update? SAs took over the Census Output Areas (COAs) – will there be a product in future?*

Census Response: NISRA would anticipate looking at settlement statistics from the 2011 Census after the production of the four major releases detailed in the Output Prospectus, that is in 2014. It is likely that any subsequent statistics would, like previously, be based on grid-square estimates.

### **Summary of questions and responses (Omagh – 7 March 2013)**

*Q: Impressed with NINIS maps - is there an overlap with Spatial NI, Councils, Eircom (RoI)*

Census Response: NISRA are involved to varying degrees with LPS, OSNI, and those leading Spatial NI. While there are similarities in the Spatial NI and NINIS products, the primary focus of NINIS is to provide access to a wide range of statistical data for small areas. Importantly, NISRA has recently invested in the development of NINIS, which is being utilised as the primary dissemination tool for the 2011 Census information, enhancing both the functionality and usability of the system in accordance with the needs of its many users.

*Q: You can show locations of Police Stations – what about leisure centres etc capture all data for an area – spatial data*

Census Response: A variety of locational data is available on NINIS; this includes fitness locations, sports hall, swimming pools etc –see statistics, people and places then filter for locational data. NINIS hosts a broad range of interactive content covering all themes and this is an area which is being continuously developed. Interactive maps are currently not available for all datasets held on NINIS. If there is an interactive map which would be very useful to customers then the NINIS team can be contacted and, where possible, will try to develop and release a map for all users. Email: [ninis.nisra@dfpni.gov.uk](mailto:ninis.nisra@dfpni.gov.uk)

*B Hegarty (Fermanagh District Council)*

*Q: Will data be produced for the new Local Government Districts (LGDs)?*

Census Response: NISRA has said that it will consider statistical outputs for new LGDs when the new LGDs are in place. NISRA will publish a proposals paper on this in due course.

*B Hegarty (Fermanagh District Council)*

*Q: DEAs not known yet – new LGDs will have to plan for services*

Census Response: Acknowledged.

*B Hegarty (Fermanagh District Council)*

*Q: Postcodes change?*

Census Response: Changes to postcodes are taken account of continuously through the CPD. NISRA is aware of the recent postcode innovation in Fermanagh and will incorporate this within the CPD.

P Maguire (Border Regional Authority)

Q: The data released by NISRA is for NI only. What work is undertaken in conjunction with Dublin to present comparable data on an all Ireland basis (for example, that being released by Eircon)?

Census Response: An EU Regulation placed responsibility on Census Offices to cover common topics and questions in their respective questionnaires, which has resulted in a high degree of harmonisation between the information available from the NI and ROI Censuses. While our primary aim is to disseminate the NI Census information, both we (and CSO Ireland) are aware of the work that other organisations are doing to present data on an all Ireland basis. Joint work undertaken by CSO Ireland and NISRA following the 2001/ 2002 Censuses did result in All Ireland publications. Discussions are ongoing about how the 2011 Census data might be similarly utilised.

Q: Why, when compared to the position in ROI, does it take so long to get the results out– is it resources?

Census Response: It is important to remember that the Census Information for NI, unlike that in the ROI, is adjusted for under-enumeration. This is important, and in line with arrangements across the rest of the UK, and ensures that the information provides estimates for the entire population rather than just the enumerated population. In addition, an Edit and Imputation process is deployed to fill in any questions which respondents may have omitted to answer. This approach, which was detailed in our proposals paper, is very different from that deployed in the ROI and takes time. In addition, for both the 2001 Census and 2011 Censuses, the NI data was processed along with that for England and Wales, giving rise to considerable efficiency savings for NI. Against this background, it is important to stress that both the First and Second Releases from the 2011 Census were published on schedule and Census Office remains confident that we can broadly match the 2001 outputs delivery time frame, despite the considerable increase in information that will be available. While the exact dates for releases are difficult to pinpoint far in advance, require considerable planning and are contingent on the ongoing quality assurance work, NISRA (under National Statistics Protocols) typically announce the exact dates of publication one month in advance of the actual release. In addition, we endeavour to keep users notified of our plans through the Outputs Prospectus that is available on the NISRA website.

Turning to the future, Census Office (in conjunction with the other UK Census Offices and CSO Ireland) is looking at alternative ways to collect and process Census type information and potentially streamline the operation. It is likely that users will be consulted about any alternative approaches, perhaps in 2014. It will be important to actively engage with this process and ensure that your views are known.

*A Simpson (Southern Education and Library Board)*

Q: *Postcode data on NINIS – can you filter?*

Census Response: These data will be released in tabular form through NINIS as per all other planned Census releases.

*A Simpson (Southern Education and Library Board)*

Q: *Can you filter for Postcode sector?*

Census Response: In 2001 an EXCEL spreadsheet was released that gave a count of people and households in each postcode. It is anticipated that the output for 2011 will be similar, perhaps with functionality to aggregate the information together for postcode sectors (e.g. BT24). Census Office also plans (in 2014) to release the 2011 Census Grid Square product, which provides the scope to obtain univariate information on a consistent geographical basis dating back to 1971.

# Annex A – Outputs Information Roadshow Evaluation Form



## Roadshow Evaluation Form 2011 Census Outputs Roadshows (4 & 7 March 2013)

Your comments are extremely valuable in helping us to ensure that the standard of our Roadshows is maintained from our users' perspective. Therefore, we would greatly appreciate it if you would take a few minutes to complete this form.

Name: (optional) .....

Organisation: (optional) .....

Roadshow attended (please circle) Belfast or Omagh

**Please rate the following aspects of the Roadshow on a scale of 1 – 5**

**1 = Very Poor    2 = Poor    3 = Average    4 = Good    5 = Excellent**

(1) Location	1	2	3	4	5
(2) Quality of Food / Refreshments	1	2	3	4	5
(3) Relevance / Usefulness of Roadshow	1	2	3	4	5
(4) Quality of Presentations	1	2	3	4	5
(5) Quality of Audio-visual Equipment	1	2	3	4	5
<b>Relevance of Content / Topics in:</b>					
(6) 2011 Census Update	1	2	3	4	5
(7) Delivering Quality Output	1	2	3	4	5
(8) The Results so Far	1	2	3	4	5
(9) Accessing the Results - NINIS Demo	1	2	3	4	5
(10) What's Still to Come	1	2	3	4	5
(11) Customer Engagements / Benefits Realisation	1	2	3	4	5
(12) Overall Rating of the Roadshow	1	2	3	4	5

(13) Do you have any comments regarding the 2011 Census Outputs Roadshow?

.....

(14) Are there any other queries you have that were unanswered during the Roadshow and you would like more information about? (If yes, please provide contact details).

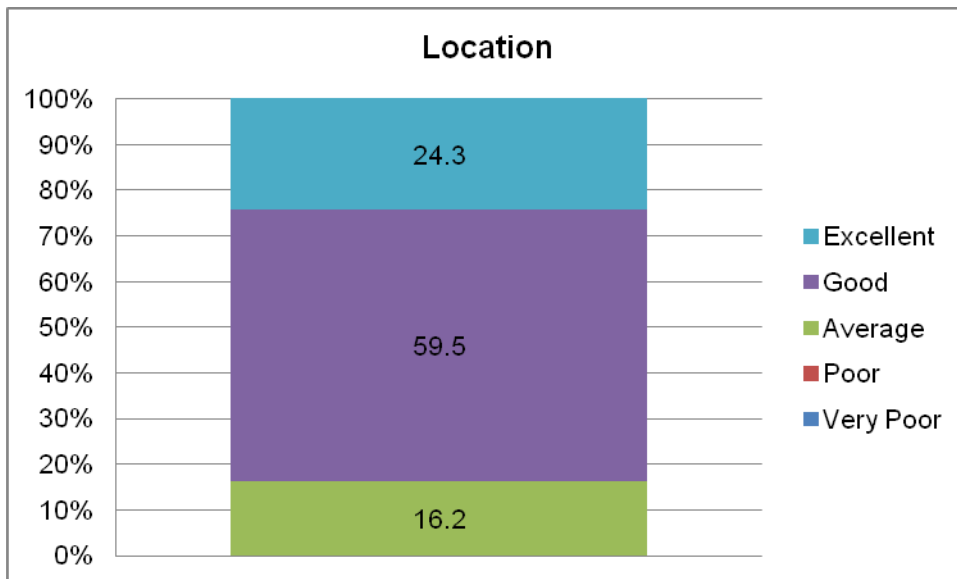
.....

**Thank you for taking the time to fill in this questionnaire.**

## Annex B – Outputs Information Roadshow Evaluation Results

We received 24 Outputs Information Roadshow Evaluation Forms from attendees in Belfast and 13 from attendees in Omagh. Due to the relatively small numbers involved, the results for the two venues (which were broadly comparable) have been reported on a combined basis.

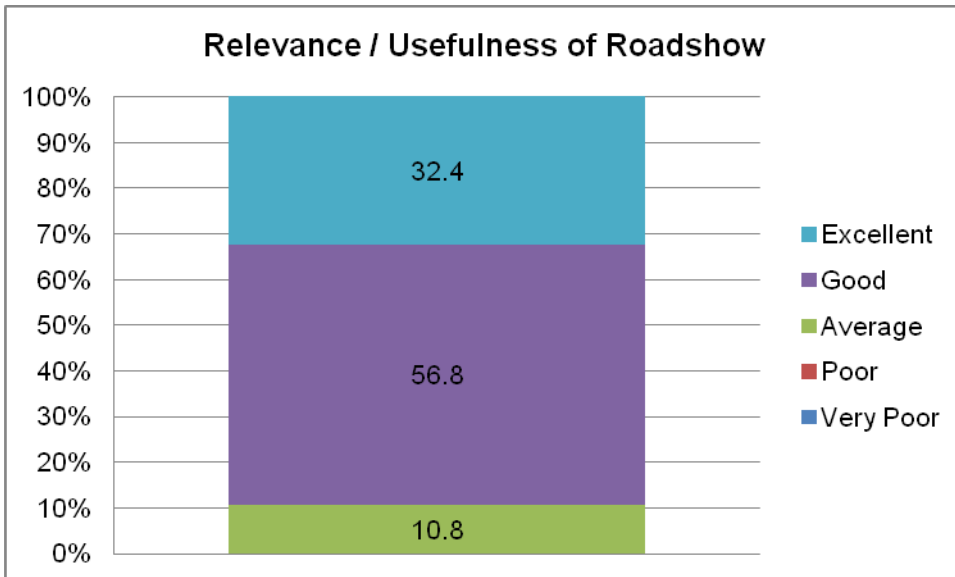
### Location



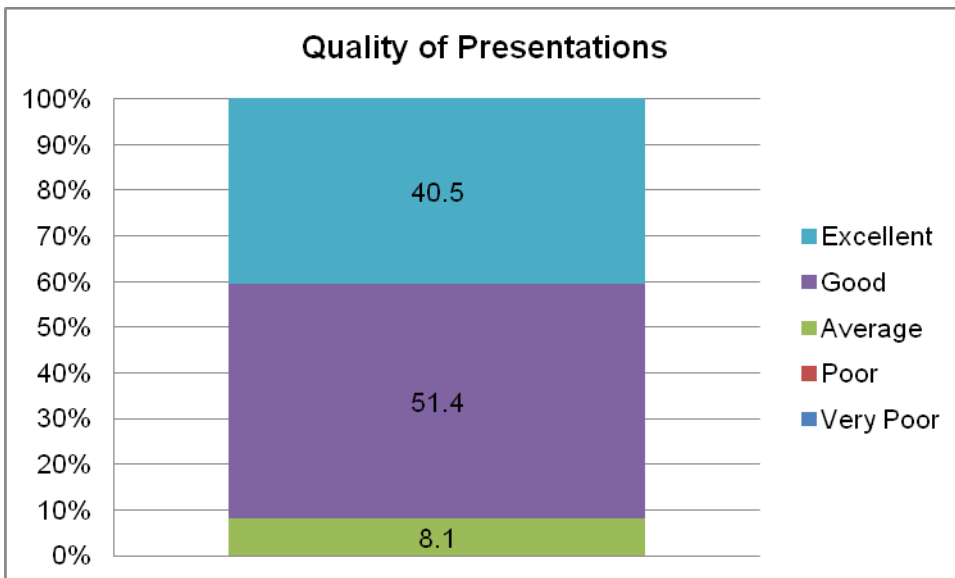
### Quality of Food / Refreshments



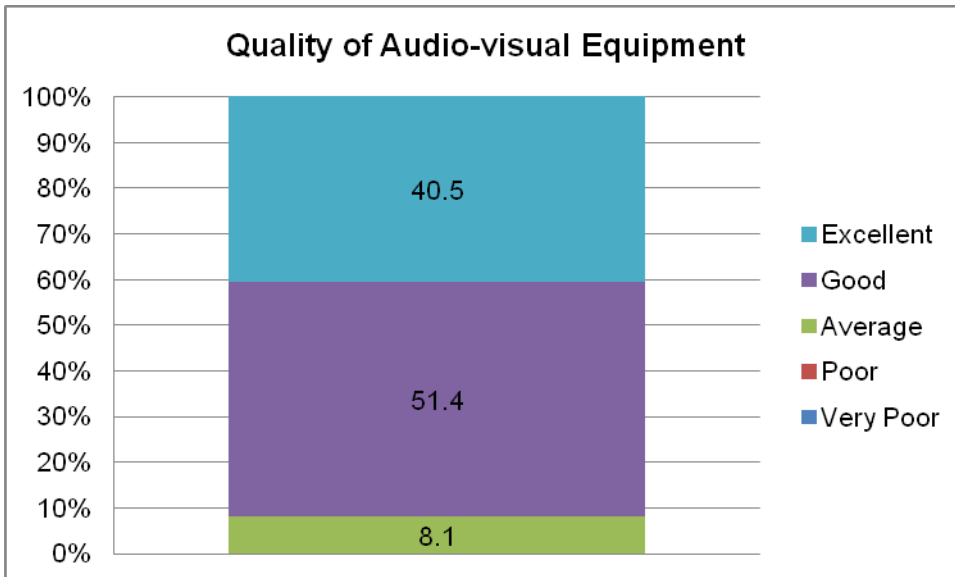
### Relevance / Usefulness of Roadshow



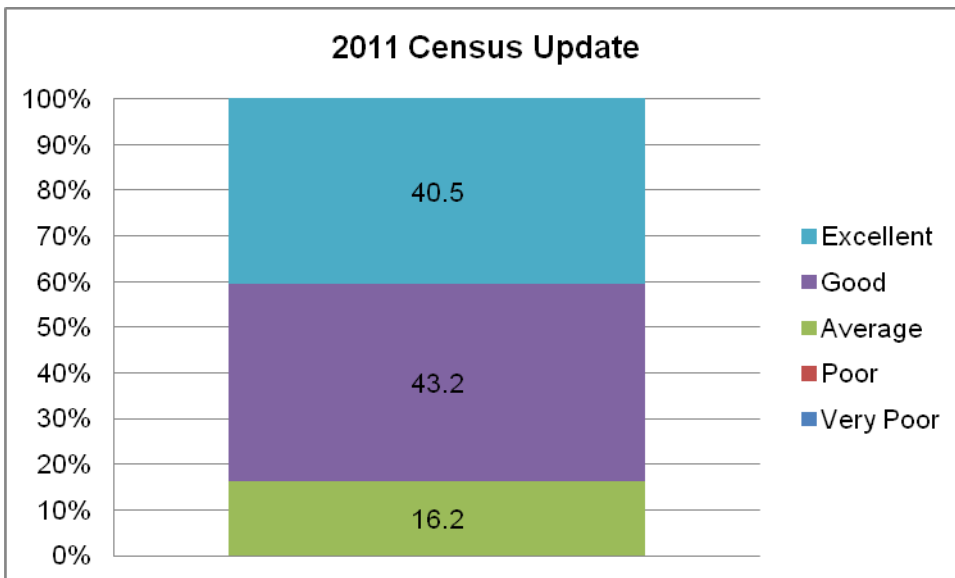
### Quality of Presentations



## Quality of Audio-visual Equipment

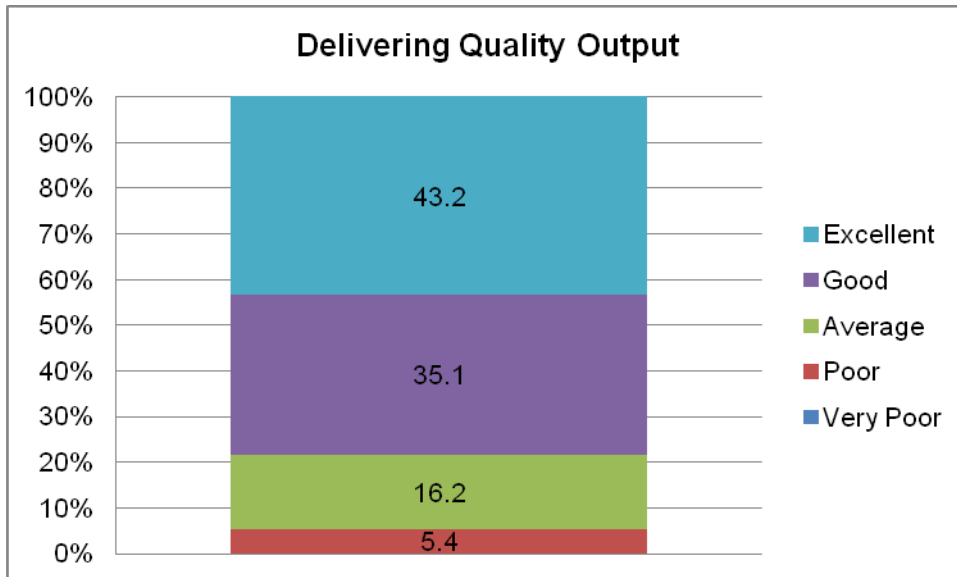


## 2011 Census Update

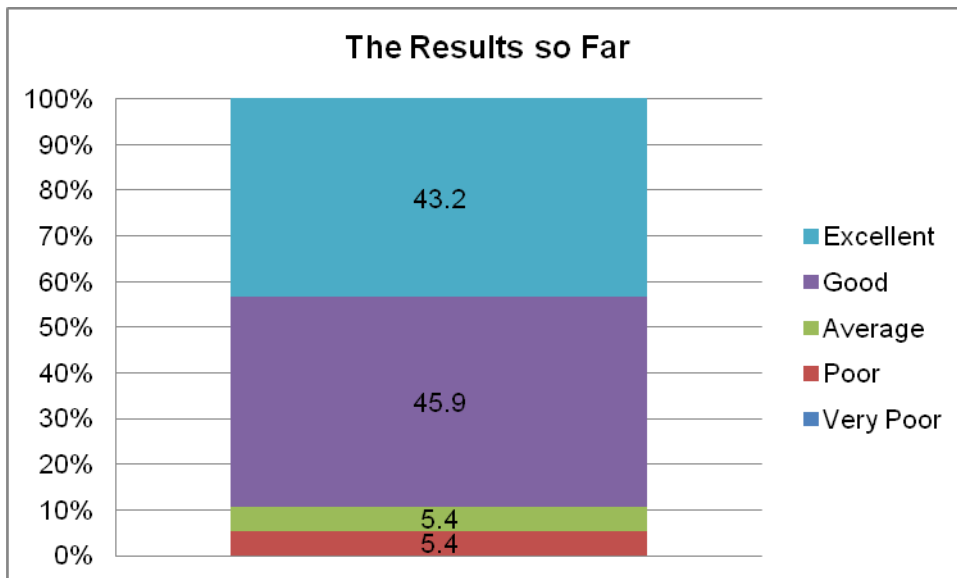




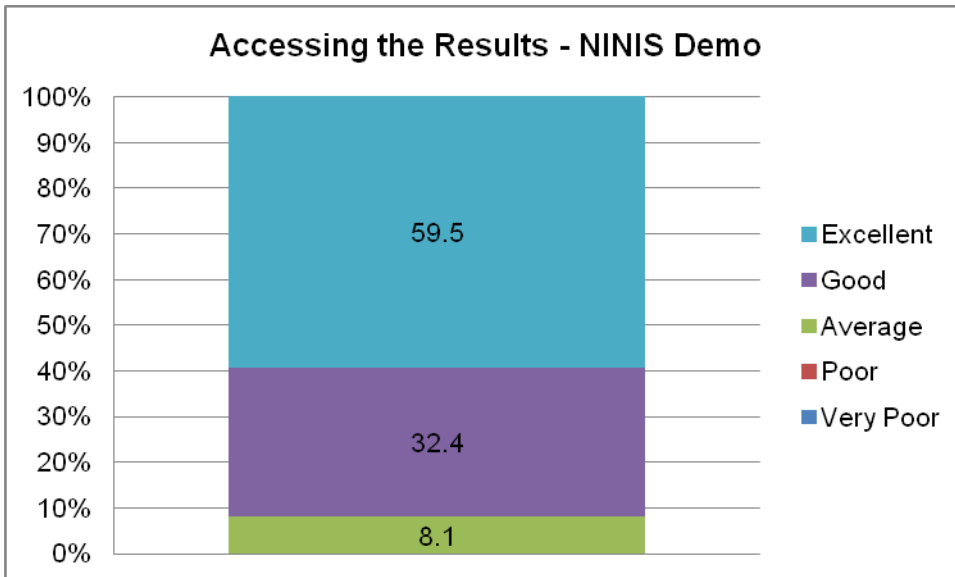
## Delivering Quality Output



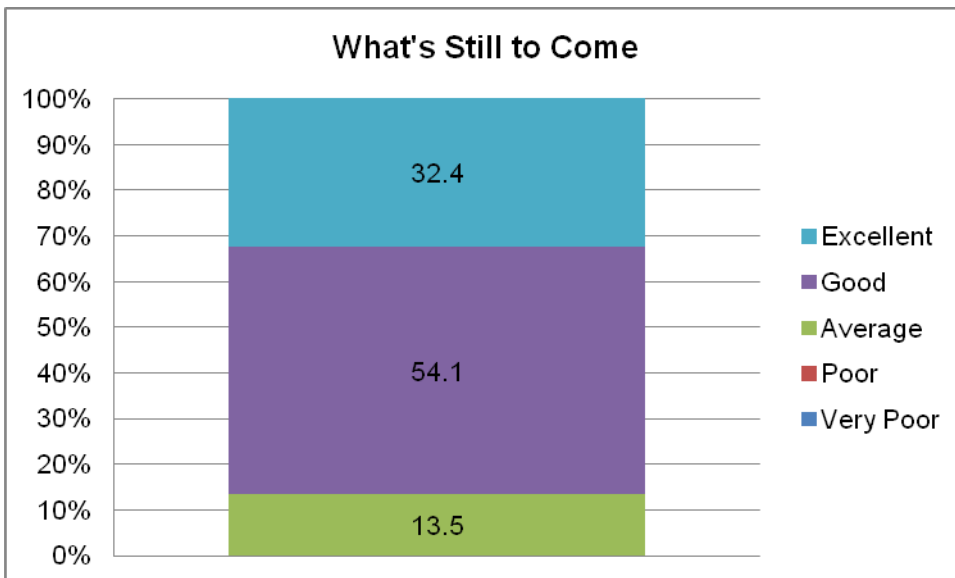
## The Results so Far



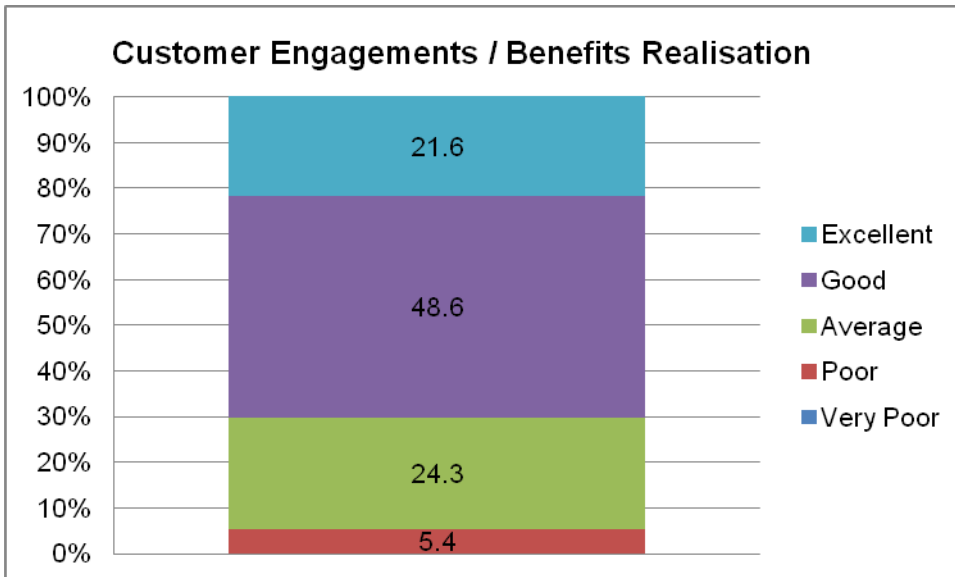
## Accessing the Results - NINIS Demo



## What's Still to Come



## Customer Engagements / Benefits Realisation



## Overall Rating of the Roadshow

