



Department of
**Finance and
Personnel**
www.dfpni.gov.uk

Personnel Statistics for the 11 NI Departments

Based on Staff in Post at 1st April 2010



INVESTOR IN PEOPLE

This document was compiled by:



The Human Resource Consultancy
Services Branch of NISRA.

Royston House
34 Upper Queen Street
Belfast BT1 6FD

Contact: Paul McKillen
028 9054 2081
Paul.McKillen@dfpni.gov.uk

Contents

	Page
Executive Summary	5
Introduction	7
Number of Staff	9
Departmental Analysis	12
Grade Profile	13
Age Profile	14
Pay	15
Gender Profile	16
Community Background Profile	18
Disability Profile	19
Ethnicity Profile	19
Analysis of Leavers	20
Appendix	21

Executive Summary

Number of Civil Servants

On 1st April 2010 there were 23,159 permanent NI Civil Servants (Full-time Equivalent, FTE) in the 11 Northern Ireland departments. Of these, 22,046 (95.2%) were non-industrial staff and 1,113 (4.8%) were industrial staff.

Overall, there was a net decrease of 352 (1.5%) in staff numbers (FTE) over the year to 1st April 2010. In percentage terms the largest decreases were at Administrative Assistant (AA) level (8.1%) and at Grade 5 level and above (6.4%).

Departmental Analysis

On 1st April 2010, DSD was the largest Department in the NICS with 7,231 staff (FTE). DCAL was the smallest Department with 289 staff (FTE). DHSSPS (6.5%) and OFMDFM (6.4%) showed the largest percentage decreases in size over the previous year.

Grade Profile

Almost one third (30.6%) of all permanent non-industrial staff (FTE) were at Administrative Officer (AO) level, while 0.9% of all staff were at Grade 5 level and above.

Age Profile

In general the NICS has an older age profile than the NI Economically Active population. Approximately two fifths of staff (42.8%) were aged 45 years and over. This compares with 33.6% in the economically active population.

Pay

The average (median) salary was £20,590 (calculated on an FTE basis). One quarter of staff earned £18,728 or less, while one quarter earned £26,086 or more.

Due to significant changes in the AA/AO pay scales many of these staff have moved into higher paybands in 2010. This has resulted in an 11.6% increase in AA/AO median pay.

Gender

On 1st April 2010, 49.9% of staff were male and 50.1% were female. Female representation among permanent staff has increased from 46.9% in 2002 to 50.1% in 2010.

Community Background Profile

Of those permanent staff for whom a community background was determined, 49.8% were Protestant and 50.2% were Roman Catholic. While the difference is marginal it is noteworthy, as it is the first time that the representation of Catholics in the 11 NI Departments has exceeded that of Protestants.

Disability Profile

A total of 1,334 (5.5%) permanent staff had declared a disability, a slightly higher number than in the previous year (1,320).

Ethnicity Profile

On 1st April 2010, there were 45 (0.2%) permanent staff from ethnic minorities.

Analysis of Leavers

The proportion of permanent non-industrial staff who left the service during 2009/10 was 3.1% (723 staff), a decrease from 4.2% in the previous year. The resignation rate in 2009/10 (1.0%) was less than half that of the previous year (2.1%).

1. Introduction

Purpose of Report

1.1 This document provides an overview of the human resource profile of the 11 NI Departments and illustrates current trends and timelines. Figures are based on actual staff in post at 1st April each year and analyses are on a financial year basis.

The Department of Justice (DOJ) is a new Northern Ireland Department which came into existence on 12 April 2010. It is NISRA's intention to produce a supplement to this report which includes key personnel statistics on all the devolved departments including DOJ by the end of the year.

Departmental Structure of the NICS

1.2 The NI Departments and the Agencies encompassed:

DARD	Includes the Forest Service and Rivers Agency
DCAL	
DE	
DEL	
DETI	
DFP	Includes NISRA, LPS
DHSSPS	
DOE	Includes the Planning Service, NI Environment Agency and the DVA
DRD	Includes the Roads Service
DSD	Includes the SSA
OFMDFM	

Coverage of the Document

1.3 The statistical information in this Document relates only to Northern Ireland Civil Servants employed in the 11 NI Departments and their Agencies (as listed above). The figures are based on actual staff in post. Other civil servants working in or on long term secondment to the NIO, the NI Assembly, the NI Prison Service, the HCS, the NI Audit Office, the Electoral Office, the NI Court Service or Invest NI do not therefore appear in these statistics. Staff on career break are also excluded.

1.4 Unless otherwise stated, the figures, charts and tables in this Document refer to all permanent staff, both industrial and non-industrial.

1.5 Details of the methods used to count Civil Servants are presented in the Appendix along with a full list of abbreviations and summary information of NICS Home & Work Locations.

1.6 To contextualise this report, comparative information on the Northern Ireland Economically Active population is included.

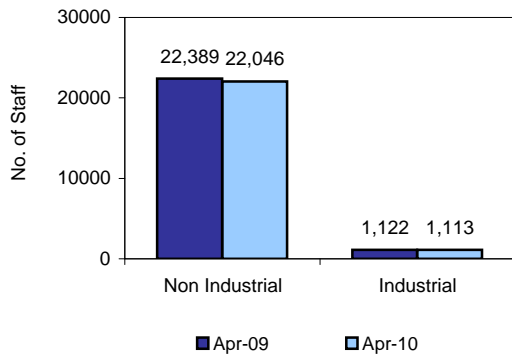
1.7 Publication of the '2009/10 Analysis of Sickness Absence in the NI Departments' report has been delayed as it has taken longer than anticipated to obtain and validate absence data from the new HR information system. Headline absence figures should be available in November. The most recent published statistics can be found at:

http://www.nisra.gov.uk/publications/Analysis_of_Sickness_Absence_0809.html

2. Number of Staff

Figure 1

Permanent Staff (FTE) 1st April 2009 and 2010



Permanent Staff

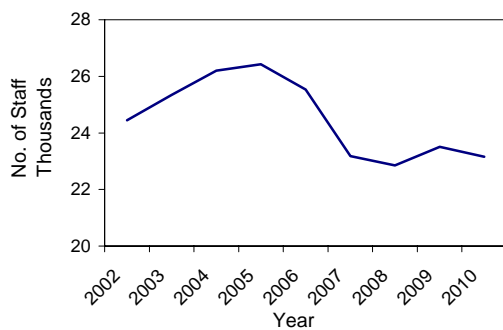
2.1 On 1st April 2010 there were 23,159 permanent NI Civil Servants (Full-time Equivalent) in the 11 Northern Ireland departments. Of these, 22,046 (95.2%) were non-industrial staff and 1,113 (4.8%) were industrial staff.

Overall, there was a net decrease of 352 (1.5%) in staff numbers (FTE) over the twelve months to 1st April 2010 (Figure 1). The number of permanent non-industrial staff (FTE) decreased by 343 (1.5%), while the number of industrial staff decreased by 9 (0.8%).

The number of staff calculated on a headcount basis was 24,300 (23,187 permanent non-industrials and 1,113 permanent industrials) down from 24,658 at 1st April 2009.

Figure 2

Permanent Staff (FTE) April 2002 - 2010



Trend in Permanent Staff Numbers

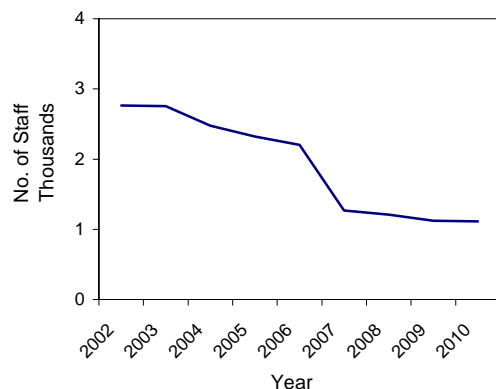
2.2 Following a steady increase in the number of permanent staff between April 2002 and 2005 (8.1%) there was a fall in staffing levels between April 2005 and 2008 (13.5%), before increasing again between April 2008 and 2009 (2.9%) only to fall by a further 1.5% between April 2009 and April 2010.

With the exception of 1st April 2008, the permanent staff numbers at 1st April 2010 were at their lowest level during the period April 2002 to April 2010.

Major changes impacting on staffing levels have included DRD Water Service moving to NI Water (2007) and Science Service in DARD moving to AFBI (2006).

Figure 3

Permanent Industrial Staff (FTE) April 2002 - 2010



Trend in Permanent Industrial Staff

2.3 The number of permanent Industrial staff has been in a downward trend since 2002, with the number of permanent industrial staff (FTE) decreasing by 59.7% between April 2002 and 2010 (Figure 3).

Table 1

**Major Occupational Group Composition (FTE)
Permanent Staff
1st April 2009 and 2010**

Occupational Group	2009	2010	% Change
General Service	15,956	15,877	-0.5
Typing	340	318	-6.4
Scientific	381	382	0.1
Technology	1,673	1,679	0.4
Legal Group	93	93	-0.1
Computing	552	544	-1.5
Dept Specialisms	2,947	2,838	-3.7
Cent Services	296	231	-22.0
Industrial and Others	1,272	1,197	-5.9
Total	23,511	23,159	-1.5

% Change based on unrounded FTE data

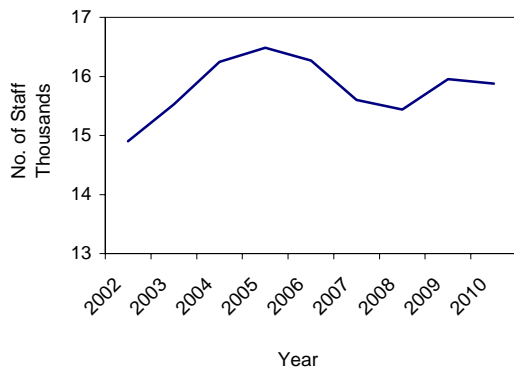
Major Occupational Groups

2.4 During 09/10 permanent staff (FTE) numbers decreased by 1.5% (352 staff). Within the major occupational groups the largest percentage change was a decrease of 22.0% (65 staff) in the Centralised Services group.

The General Service, the largest occupational group accounting for over two thirds of the NICS, saw a decrease of 0.5% in staffing levels during the previous twelve months. See below for analysis of trends in the General Service.

Figure 4

**General Service
Permanent Staff (FTE)
April 2002 - 2010**

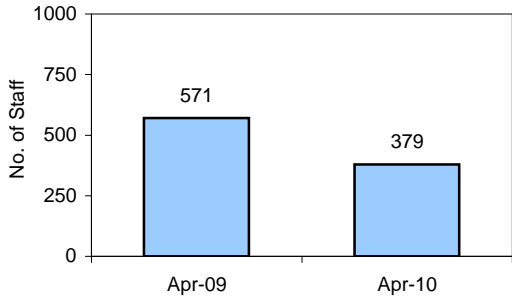


General Service

2.5 The number of General Service staff (FTE) rose steadily between 2002 and 2005 (10.6%). However, between 2005 and 2008 numbers had decreased by 6.3%, before increasing again between 2008 and 2009 by 3.4% only to fall by a further 0.5% between April 2009 and April 2010.

Figure 5

**Casual Staff (FTE)
1st April 2009 and 2010**



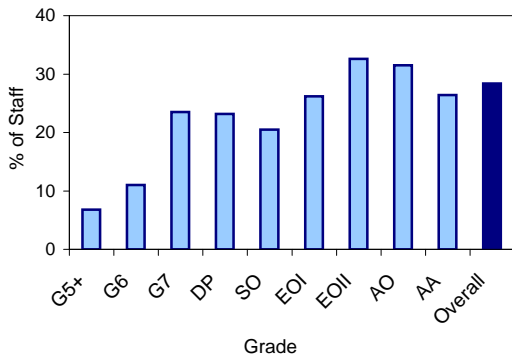
Casual Staff

2.6 On 1st April 2010 there were 379 NI Civil Servants (FTE) employed on casual contracts, representing a decrease of 33.6% (192 staff) from the previous year.

The number of staff employed on a casual contract in April 2010 was 60.1% lower than in April 2002.

Figure 6

**% Female Permanent Non-Industrial Part-Time Staff at each Grade (Headcount)
1st April 2010**



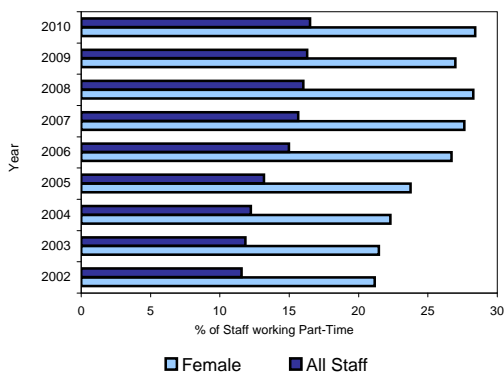
Part-Time Staff

2.7 There were 3,832 (headcount) permanent non-industrial staff working part-time on 1st April 2010 – 16.5% of the permanent non-industrial workforce.

Over a quarter (28.4%) of female permanent non-industrial staff worked part-time, compared with 3.4% of males. Figure 6 shows that the proportion of females working part-time ranged from 32.6% at EOII level to 6.8% at Grade 5 and above.

Figure 7

**Part-Time Staff (Headcount)
April 2002 - 2010**



Trends in Part-Time Working

2.8 Analysis of trend data (Figure 7) indicates a slight increase each year in part-time working among permanent non-industrial staff. The proportion of females working on a part-time basis has also increased each year between 2002 and 2010 with the exception of a decrease between 2008 and 2009.

3. Departmental Analysis

Table 2

Departmental Composition (FTE)

Permanent Staff

1st April 2009 and 2010

DEPARTMENT	2009	2010	% Change
DARD	2,946	2,893	-1.8
DCAL	272	289	6.4
DE	632	601	-4.9
DETI	635	602	-5.2
DFP	3,349	3,262	-2.6
DEL	1,780	1,877	5.4
DHSSPS	831	777	-6.5
DOE	2,853	2,812	-1.4
DRD	2,509	2,445	-2.6
DSD	7,310	7,231	-1.1
OFMDFM	394	369	-6.4
Total	23,511	23,159	-1.5

Figure 8

Grade 5 + Staff (FTE)

Permanent Non-Industrial Staff

1st April 2010

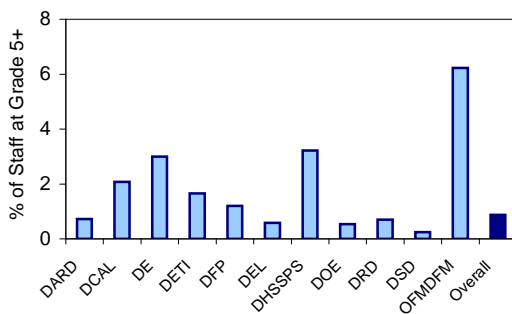
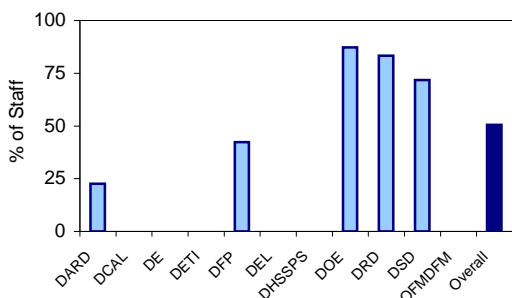


Figure 9

Executive Agency Staff (FTE)

Permanent Staff

1st April 2010



Permanent Staff

3.1 On 1st April 2010, DSD was the largest Department in the NICS with 7,231 staff (FTE). DCAL was the smallest Department with 289 staff (FTE).

Over the last twelve months DARD, DE, DETI, DFP, DHSSPS, DOE, DRD, DSD and OFMDFM have all decreased in size. In percentage terms the largest decreases were in DHSSPS (6.5%) and OFMDFM (6.4%). In contrast DCAL and DEL have grown by 6.4% and 5.4% respectively.

Senior Staff

3.2 The proportion of permanent non-industrial staff at Grade 5 and above in each Department ranged from 0.2% in DSD to 6.2% in OFMDFM (Figure 8).

Executive Agencies

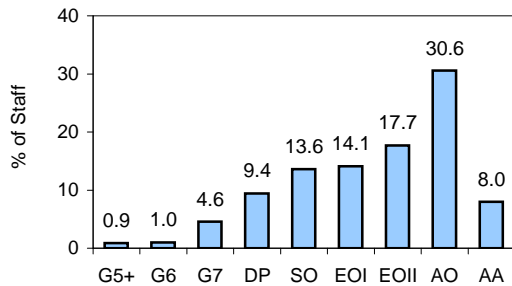
3.3 At 1st April 2010 there were 9 executive agencies in the NI Departments. These agencies accounted for 11,712 (50.6%) permanent staff (FTE).

The majority of staff in DOE (87.3%), DRD (83.3%) and DSD (71.7%) worked in an Executive Agency.

4. Grade Profile

Figure 10

**Grade Level Distribution (FTE)
Permanent Non-Industrial Staff
1st April 2010**

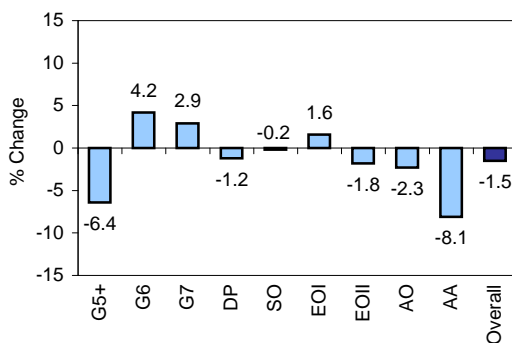


Permanent Non-Industrial Staff

4.1 As shown in Figure 10, almost one third (30.6%) of all permanent non-industrial staff (FTE) were at AO level, while 0.9% of all staff were at Grade 5 level and above.

Figure 11

**Percentage Change at each Grade Level (FTE)
Permanent Non-Industrial Staff
April 2009 - 2010**

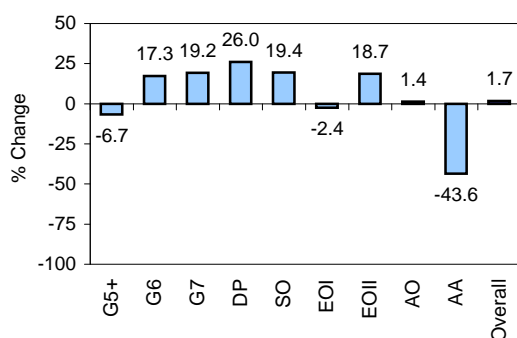


Change in Grade Structure

4.2 In the twelve months to 1st April 2010, the number of permanent non-industrial staff (FTE) decreased by 1.5%. Staff numbers decreased at all Grade levels with the exception of G6, G7 and EOI. During the twelve month period, the largest decreases were at AA level, where staff numbers fell by 8.1% and Grade 5 level and above which fell by 6.4%.

Figure 12

**Percentage Change at each Grade Level (FTE)
Permanent Non-Industrial Staff
April 2002 - 2010**



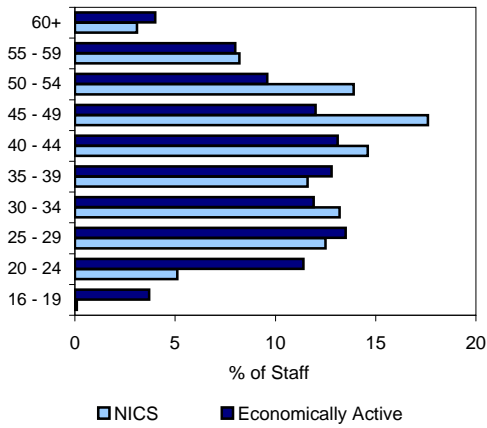
4.3 Between April 2002 and April 2010 the number of permanent non-industrial staff (FTE) increased by 1.7%. This overall figure masks a sizeable decrease of 43.6% among staff at AA level. Staff at Grade 5 level and above decreased by 6.7% during this period.

During this period there have been substantial increases at all other grade levels with the exception of staff in the EOI and AO grade levels (Figure 12).

5. Age Profile

Figure 13

Age Distribution (Headcount) Permanent Non-Industrial Staff Vs Economically Active Population^[1]



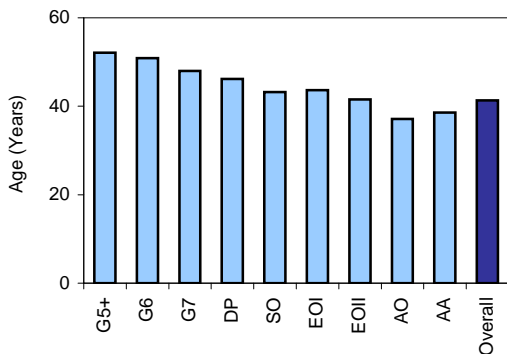
Permanent Non-Industrial Staff

5.1 Figure 13 shows the age distribution of permanent non-industrial staff on 1st April 2010. In general the NICS has an older age profile than the economically active population.

Approximately two fifths of staff (42.8%) were aged 45 years and over. This compares with 33.6% in the economically active population.

Figure 14

Average Age by Grade Permanent Non-Industrial Staff 1st April 2010



Average Age

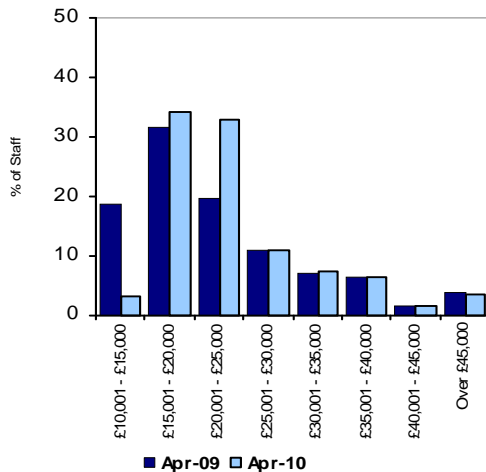
5.2 The average age of permanent non-industrial staff in the NICS by each grade level is shown in Figure 14. The average age of staff on 1st April 2010 was 41.3 years.

^[1] Data is taken from the Labour Force Survey (LFS) based on Working Age Population Quarter 1 (Jan-Mar 2010). As the LFS is a sample survey, all data is subject to sampling error.

6. Pay Profile

Figure 15

Gross Salary Band Distribution (Headcount) Permanent Non-Industrial Staff 1st April 2009 and 2010^[3]



Permanent Non-Industrial Staff

6.1 Figure 15 shows the proportion of permanent non-industrial staff in each salary band^[2]. On 1st April 2010, the average (median) salary was £20,590 (calculated on a Full-Time Equivalent basis).

One quarter of staff earned £18,728 or less, while one quarter earned £26,086 or more.

As a consequence of the 2009 Equal Pay Settlement there have been significant changes in the AA/AO pay scales. A high proportion of the AA/AO staff that were in the lowest band last year have moved into the £15,001-£20,000 band. In addition, a number of AO staff from the £15,001-£20,000 band have moved into the £20,001-£25,000 pay band. This has resulted in an 11.6% increase in AA/AO median pay.

The number of staff in each salary band (FTE) for each responsibility level is shown below in Table 3.

Table 3: Permanent Non-Industrial Staff numbers (FTE) by Salary Band and Responsibility Level: 1st April 2010

Salary Band	Responsibility Level										Total
	Grade 5+	%	Grade 6/7	%	DP/SO	%	EOI/EOII	%	AO/AA	%	
£10,001 – 15,000									696	8.56%	696
£15,001 – 20,000							1,769	24.46%	5,661	69.63%	7,430
£20,001 – 25,000					695	13.65%	4,586	63.41%	1,772	21.79%	7,053
£25,001 – 30,000					1,597	31.36%	869	12.01%			2,466
£30,001 – 35,000					1,654	32.48%	7	0.10%			1,661
£35,001 – 40,000			277	21.74%	1,133	22.26%					1,410
£40,001 – 45,000			353	27.74%	6	0.12%					359
£45,001 – 50,000			292	22.96%							292
£50,001 – 55,000			219	17.18%							219
£55,001 – 60,000	32	14.82%	58	4.53%							90
£60,001 – 65,000	48	22.07%	48	3.80%							96
£65,001 – 70,000	48	22.44%									48
£70,001 – 75,000	10	4.63%									10
£75,001 – 80,000	9	4.17%									9
£80,001 – 85,000	17	7.87%									17
£85,001 – 90,000	13	5.93%									13
£90,001 – 95,000	10	4.63%									10
£95,001 – 100,000	8	3.71%									8
More than £100,000	20	9.26%									20
Not Reported	1	0.46%	26	2.04%	7	0.14%	1	0.01%	1	0.01%	36
Total	216	100.00%	1,274	100.00%	5,093	100.00%	7,232	100.00%	8,129	100.00%	21,944
Lower Quartile	£61,988		£41,391		£26,289		£20,015		£16,257		£18,728
Median	£67,391		£44,526		£30,142		£20,801		£17,348		£20,590
Upper Quartile	£84,034		£50,013		£33,893		£22,311		£18,728		£26,086

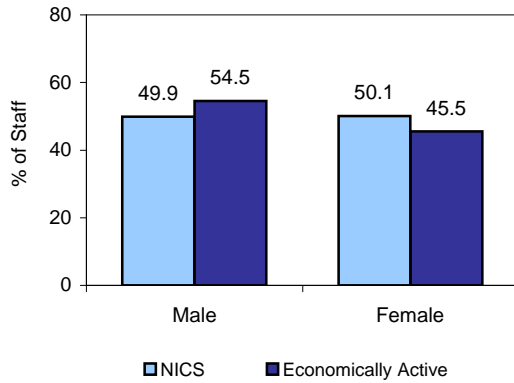
^[2] A number of cases were excluded from the analysis as their salary/grade information was missing in the data provided by HRConnect.

^[3] When comparing the pay information from 1st April 2009 with that of 1st April 2010, it should be noted that for EOI staff and above, their pay scales are the same, due to the fact that the pay award effective from August 2009 was not implemented until September/October 2010. However, AA to EOII staff were assimilated onto new Equal pay scales in March 2010.

7. Gender Profile

Figure 16

Gender Distribution (Headcount) Permanent Staff Vs Economically Active Population



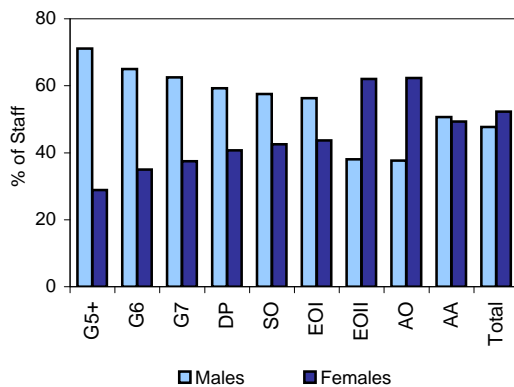
Permanent Staff

8.1 On 1st April 2010, 49.9% of staff were male and 50.1% were female (Figure 16).

Figures from the Labour Force Survey^[4] indicate that the gender composition of the NI economically active working age population was 54.5% male and 45.5% female.

Figure 17

Gender Distribution within each Grade Permanent Non-Industrial Staff 1st April 2010

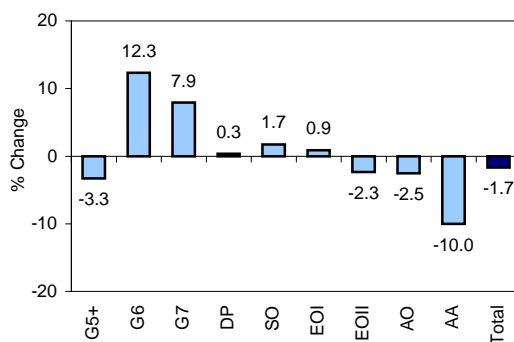


Grade Analysis - Permanent Non-Industrial Staff

8.2 Broadly speaking, the higher the grade level the lower the level of female representation (Figure 17). Female representation was lowest at Grade 5 and above (28.9%) and highest at AO level (62.3%).

Figure 18

Percentage Change at each Grade Permanent Non-Industrial Female Staff 2009 - 2010



Change in Female Staff Numbers

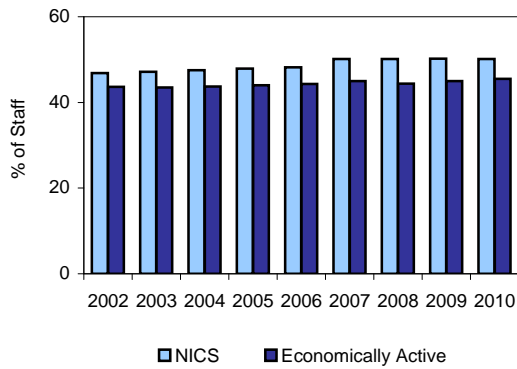
8.3 In the twelve months to 1st April 2010, the number of permanent non-industrial female staff decreased by 1.7%.

The number of female staff increased at all Grade levels with the exception of G5+, EOII, AO and AA levels. The largest percentage increase occurred at G6 level (12.3%). The largest percentage decrease in female staff was at AA level (10.0%).

^[4] Data is taken from the Labour Force Survey (LFS) based on Working Age Population Quarter 1 (Jan-Mar 2010). As the LFS is a sample survey, all data is subject to sampling error.

Figure 19

**Female Representation
Permanent Staff
Vs Economically Active Population^[5]
2002 - 2010**



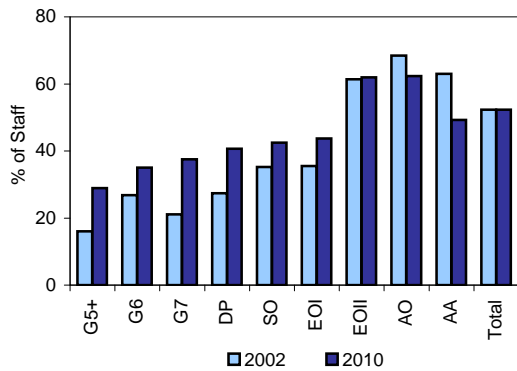
Trends in Female Representation

8.4 Female representation among permanent staff has increased from 46.9% in 2002 to 50.1% in 2010 (Figure 19).

Female representation within the economically active population has increased during the same period, from 43.6% in 2002 to 45.5% in 2010. Since 2002 the representation of females in the NICS has been higher than the corresponding estimates of female representation in the economically active population.

Figure 20

**Female Representation
within each Grade Level
Permanent Non-Industrial Staff
1st April 2002 and 1st April 2010**



Trends in Female Representation By Grade

8.5 Changes in the representation of female permanent non-industrial staff by grade level between 2002 and 2010 are shown in Figure 20. The female share increased during this period at all grade levels with the exception of the AO and AA grades.

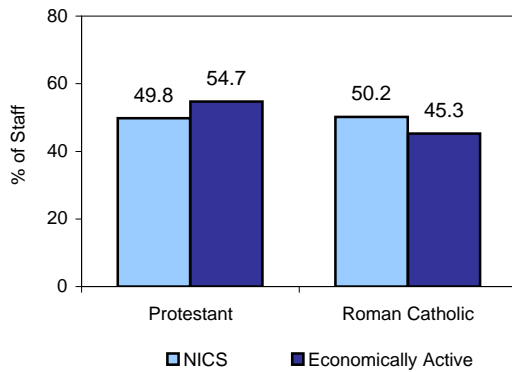
Proportionately the largest increase occurred at Grade 5 and above where the representation of females increased from 16.1% to 28.9%. A similar magnitude of increase was also evident at Grade 7 level where female representation increased from 21.1% to 37.5%.

^[5] Data is taken from the Labour Force Survey (LFS) based on Working Age Population Quarter 1 (Jan-Mar 2010). As the LFS is a sample survey, all data is subject to sampling error.

8. Community Background Profile

Figure 21

Community Background Distribution (Headcount) Permanent Staff Vs Economically Active Population



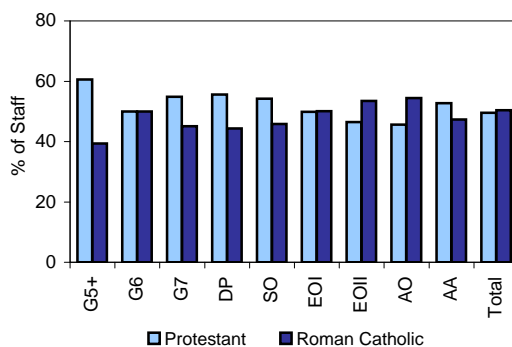
Permanent Staff

9.1 Of those permanent staff for whom a community background was determined, 49.8% were Protestant and 50.2% were Roman Catholic (Figure 21).

Figures from the Labour Force Survey^[6] indicate that the community background composition of the NI economically active population was 54.7% Protestant and 45.3% Roman Catholic.

Figure 22

Community Background Distribution within each Grade Permanent Non-Industrial Staff 1st April 2010



Grade Analysis - Permanent Non-Industrial Staff

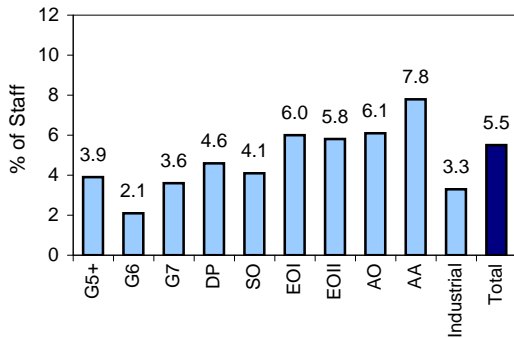
9.2 In general, the higher the grade level the lower the level of Roman Catholic representation. Roman Catholic representation ranged from 39.4% at Grade 5 and above level to 54.4% at AO. The converse is true of Protestant representation which ranges from 45.6% at AO to 60.6% at Grade 5 and above level (Figure 22).

^[6] Data is taken from the Labour Force Survey (LFS) based on Working Age Population Quarter 1 (Jan-Mar 2010). As the LFS is a sample survey, all data is subject to sampling error.

9. Disability Profile^[7]

Figure 23

Disability within each Grade (Headcount)
Permanent Staff
1st April 2010



Permanent Staff

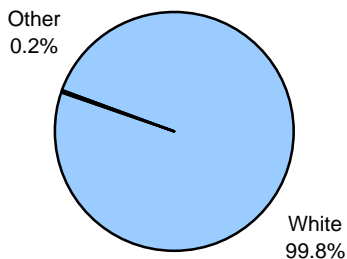
10.1 A total of 1,334 (5.5%) permanent staff had declared a disability, a slightly higher number than in the previous year (1,320).

In general, with the exception of staff at Grade 5 and above, the higher the level of responsibility, the lower the proportion of employees with a declared disability.

10. Ethnicity Profile^[8]

Figure 24

Ethnic Distribution (Headcount)
Permanent Staff
1st April 2010



Permanent Staff

11.1 On 1st April 2010, there were 45 (0.2%) permanent staff from ethnic minorities (Figure 28).

In comparison, figures from the Census^[9] indicate that 0.8% of the working age population were from an ethnic minority.

^[7] Figures in this section relate to NICS permanent staff who declared that they had a disability.

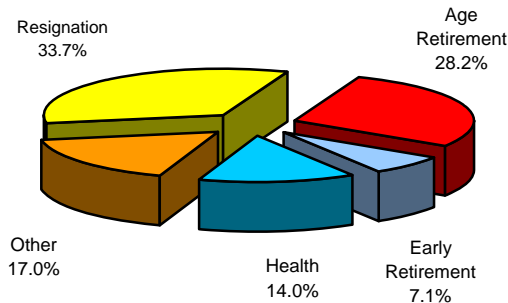
^[8] Figures in this section relate solely to NICS permanent staff for whom an ethnic background was determined and are subject to ongoing validation by the DFP Equal Opportunities Unit.

^[9] 2001 Northern Ireland Census of Population.

11. Analysis of Leavers

Figure 25

Reasons for Leaving Permanent Non-Industrial Staff 2009 - 2010



Reasons for Leaving

12.1 The proportion of permanent non-industrial staff who left the service during 2009/10 was 3.1% (723 staff), a decrease on the previous financial year (4.2%).

The grounds for leaving the NICS during 2009/10 are shown in Figure 25. The main reason for leaving was resignation, which accounted for 33.7% of all leavers (244 staff). The main reason for leaving during 2008/09 was also resignation, accounting for 50.5% of all leavers during this period (480 staff).

Figure 26

Overall Wastage Rate Permanent Non-Industrial Staff 2002-2010

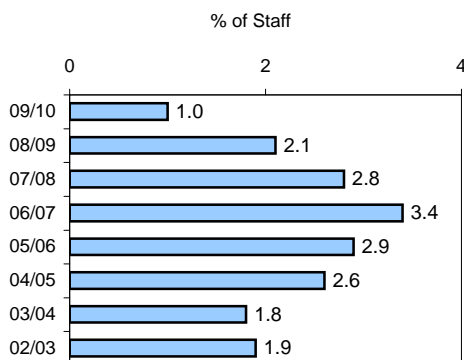


Trends in Wastage Rates ^[10]

12.2 Figure 26 shows that the wastage rate of 3.1% recorded in 2009/10 was lower than the previous financial year (4.2%), and is the lowest rate recorded during the period 2002/03 to 2009/10.

Figure 27

Resignation Rate Permanent Non-Industrial Staff 2002-2010



Trends in Resignation Rates

12.3 The resignation rate in 2009/10 was 1.0%. Like the overall wastage rate, this was lower than the previous financial year (2.1%), and is the lowest rate recorded during the period 2002/03 to 2009/10.

^[10] Wastage rates are calculated by dividing the number of staff who left during the financial year by the number of staff in post at the start of the financial year, then multiplying by 100.

Appendix

Counting Civil Servants

Two methods of counting Civil Servants are used in this Document:

Headcount: each civil servant is counted as one member of staff, regardless of whether he or she works full-time or part-time. This is appropriate, for example, when recording the numbers joining or leaving the service.

Full-time Equivalent: each full-time civil servant is counted as one member of staff and each part-time civil servant is counted as a proportion (based on hours worked) of a full-time member of staff. This is appropriate, for example, when recording the number of staff required to perform Civil Servant functions.

List of Abbreviations

AA	Administrative Assistant
AO	Administrative Officer
DARD	Department of Agriculture and Rural Development
DCA	District Council Area
DCAL	Department of Culture, Arts and Leisure
DE	Department of Education
DEL	Department for Employment and Learning
DETI	Department of Enterprise, Trade and Investment
DFP	Department of Finance and Personnel
DHSSPS	Department of Health, Social Services and Public Safety
DOE	Department of the Environment
DP	Deputy Principal
DRD	Department for Regional Development
DSD	Department for Social Development
DVA	Driver and Vehicle Agency
EOI	Executive Officer I
EOII	Executive Officer II
FTE	Full-Time Equivalent
HCS	Home Civil Service
LPS	Land and Property Services
NI	Northern Ireland
NICS	Northern Ireland Civil Service
NIO	Northern Ireland Office
NISRA	Northern Ireland Statistics and Research Agency
OFMDFM	Office of the First Minister and Deputy First Minister
OSNI	Ordnance Survey of Northern Ireland
SO	Staff Officer
SSA	Social Security Agency

Appendix

Table 4	
Home Locations of Permanent Staff (Headcount) 2010	
District Council	Nos. of Civil Servants Living in each DCA per Thousand of the Economically Active Population*
Antrim	21.1
Ards	42.0
Armagh	16.5
Ballymena	21.3
Ballymoney	20.7
Banbridge	24.2
Belfast	31.3
Carrickfergus	26.8
Castlereagh	41.4
Coleraine	29.5
Cookstown	18.8
Craigavon	25.1
Derry	22.7
Down	34.0
Dungannon	16.6
Fermanagh	18.7
Larne	20.5
Limavady	32.5
Lisburn	26.5
Magherafelt	26.3
Moyle	20.8
Newry and	15.7
Newtownabbey	29.1
North Down	37.2
Omagh	25.4
Strabane	32.7

*Economically Active Population sourced from LFS Local Area Database 2009

Appendix

Table 5	
Work Locations of Permanent Staff (Headcount) 2010	
District Council	Nos. of Civil Servants Working in each DCA per Thousand of the Economically Active Population*
Antrim	13.0
Ards	4.7
Armagh	11.5
Ballymena	18.1
Ballymoney	6.7
Banbridge	4.7
Belfast	125.9
Carrickfergus	4.8
Castlereagh	14.0
Coleraine	39.9
Cookstown	9.4
Craigavon	16.6
Derry	35.4
Down	13.7
Dungannon	8.8
Fermanagh	18.7
Larne	7.0
Limavady	6.6
Lisburn	11.7
Magherafelt	9.9
Moyle	2.4
Newry and	8.2
Newtownabbey	5.0
North Down	21.5
Omagh	32.5
Strabane	6.9

*Economically Active Population sourced from LFS Local Area Database 2009