

SMALL AREAS POPULATION ESTIMATES (2010) – STATISTICAL REPORT



Executive Summary

1. NISRA has produced population estimates for mid-2010 for small areas and Parliamentary Constituencies in Northern Ireland (see background note 1).
2. Between mid-2001 and mid-2010 the number of people living in Northern Ireland is estimated to have increased by 110,000 or 6.5%. The size of the population has increased from 1.689 million in 2001 to 1.799 million in 2010.
3. In general at the small area level the population has shown greatest increase in the suburban areas on the outskirts of towns and cities. Largest growth is seen in suburban areas just outside Belfast in parts of the Derryaghly and Mallusk wards, which have more than doubled in population between 2001 and 2010. In addition areas around the M1/M2 in Craigavon and Antrim and the A1 near Banbridge and Newry have also increased in population size. Similarly, areas on the outskirts of Derry Urban Area have also increased significantly in population size.
4. In contrast little change was seen in the centre of urban areas. The list of areas that have shown the largest decrease in population since 2001 is dominated by areas that contain or contained Armed Forces establishments.
5. Over the period 2001-2010, population in each of the Belfast North, South and West Parliamentary Constituencies has fallen by around 3%. However, this population decline has levelled off in recent years in Belfast North and Belfast South. The largest population increase in this period occurred in Fermanagh & South Tyrone (+14.2%), Upper Bann (+14.6%), and South Down (+13.2%) Parliamentary Constituencies, with increases more than twice that of Northern Ireland (+6.5%).
6. More detailed analysis and figures are attached – including a map outlining population change for all areas.

Introduction

1. Between mid-2001 and mid-2010 the number of people living in Northern Ireland is estimated to have increased by 110,100 people (6.5%). The size of the resident population in Northern Ireland has increased from 1.689 million people at 30 June 2001 to 1.799 million people at 30 June 2010. The fastest growth occurred in the three-year period between 2005 and 2008 when international in migration led to population increases of 1% in each year. Since then, Northern Ireland has moved to a position of balanced migration, with a population increase of 0.6% between mid-2009 and mid-2010 driven predominantly by an excess of births over deaths.
2. NISRA publishes the mid-year population estimates every year at Local Government District level in June of the following year. For smaller areas such as Super Output Areas (SOAs) – see background notes 2 and 3 – the estimation process becomes more complex, particularly in relation to migration. This report outlines some of the main findings in the 2010 small area population estimates.

Local Government Districts

3. Between 2001 and 2010, Dungannon and Craigavon Local Government Districts had the largest increases in population (+21% and +16% respectively). Other districts that experienced population increases of more than twice the Northern Ireland percentage increase include Banbridge (+14%), Newry & Mourne (+14%) and Ballymoney (+13%) Local Government Districts.
4. In contrast, between 2001 and 2010 Belfast Local Government District experienced a loss in population of 3%. Figure 1 shows the overall percentage population change for all Local Government Districts within Northern Ireland between 2001 and 2010. Further details on the mid-year population estimates at Local Government District level can be found on the NISRA website.

Super Output Areas (see background note 1)

5. Whilst there is a variation in population change within Local Government Districts (-3% to +21% for 2001-2010), there is even greater variation in population change in small areas (-38% to +125% for 2001-2010). In general the population has shown less change within the centre of urban areas and the majority of large population growth seen in the suburban areas on the outskirts of towns and cities.
6. In Dungannon Local Government District, the overall population increase was 21% between 2001 and 2010. However, the increase varied greatly within the Local Government District, with Killymeal SOA showing an increase of 42% and Coalisland South SOA showing an increase of less than 2%. Table 1 lists the small areas which have shown the highest increases in population between 2001 and 2010.
7. The largest increases between 2001 and 2010 have been seen in Derryaghy_1 (+125%) and Mallusk_2 (+117%), both on the outskirts of Belfast and Kilwaughter_1 (+91%) in Larne. These areas have seen considerable domestic housing development.
8. Areas on the “M1/M2 corridors” in Antrim and Craigavon, as well as along the A1 around Banbridge and Newry have increased in population size. Similarly, areas on the outskirts of Derry Urban Area have also increased significantly in population size. Map 1 shows the percentage population change by small area between 2001 and 2010.
9. Population estimates for small areas can fluctuate significantly between consecutive years. The variation in population change between 2001 and 2010 in small areas (-38% to +125%) can also be expressed as an average annual population change, which ranged from -5% to +9%. However, year-on-year changes in this period are in some cases more than double this average annual rate. Therefore, care should be taken when interpreting population changes between consecutive years in small areas.

10. Several of the small areas that have shown the biggest decreases previously contained defence establishments. This is most noticeable in Ebrington_1 (-38%), which contained the Ebrington Barracks in Derry Local Government District. Also, Aldergrove_1 (-36%) in Antrim Local Government District and Lisanelly_1 (-34%) in Omagh Local Government District have both shown large decreases in population; again this is mainly due to the decreased Armed Forces presence in these areas. Table 2 lists the small areas which have shown the highest relative decreases in population between 2001 and 2010.

11. In 2001, the average population in a SOA was 1,898; this has increased by 5.1% to 2,022 in 2010. There is also a wider range of population estimates in SOAs in 2010, with populations ranging from 940 to 4,230 in 2010 compared to a range of 1,290 to 2,970 in 2001.

Urban and Rural small areas (change in population size)

12. Each Super Output Area can be classified as being either urban or rural (see background note 4). Between 2001 and 2010, the population in urban SOAs increased by 3%, whilst the population in rural areas increased by 13%. However, nine out of the ten fastest growing SOAs were urban areas. Some areas that were classified as rural and experienced a large increase in population may now be classified as urban since they were on the outskirts of towns or villages that have grown in population size.

Parliamentary Constituencies

13. The composition of Parliamentary Constituencies was changed in 2008 and first came into effect during the 2010 Westminster election (see note 5). The same boundaries apply to the Northern Ireland Assembly Areas since the elections in May 2011. Population estimates for Parliamentary Constituencies are created by aggregating the estimates of their constituent small areas.

14. Between 2009 and 2010, Fermanagh & South Tyrone (+1.6%) and Lagan Valley (+1.5%) Parliamentary Constituencies had the greatest increases in population. In both constituencies, positive net migration contributed around 55% to the population growth. Mid Ulster (+1.3%), Newry & Armagh (+1.2%) and Upper Bann (+1.2%) Parliamentary Constituencies also had population increases that were more than twice that of Northern Ireland. In these three areas, natural change (the excess of births over deaths) accounted for roughly 70% of the population growth.
15. In contrast, East Londonderry (-0.7%) and Belfast West (-0.3%) were the only Parliamentary Constituencies that experienced a loss in population between 2009 and 2010; net out migration and other changes outnumbered the excess of births over deaths (natural increase).
16. Over the period 2001-2010, population in each of the Belfast North, South and West Parliamentary Constituencies has fallen by around 3%. However, this population decline has levelled off in recent years in Belfast North and Belfast South. The largest population increase in this period occurred in Fermanagh & South Tyrone (+14.2%), Upper Bann (+14.6%), and South Down (+13.2%) Parliamentary Constituencies, with increases more than twice that of Northern Ireland (+6.5%).
17. Figure 2a shows the overall percentage population change for all Parliamentary Constituencies within Northern Ireland between 2009 and 2010; Figure 2b shows equivalent figures for the period between 2001 and 2010.
18. All Parliamentary Constituencies in Northern Ireland experienced a natural increase in population (births less deaths) between 2009 and 2010. The largest natural increase of population was in Upper Bann Parliamentary Constituency, with a natural increase of 1,000 people.
19. In 2010, Newry & Armagh Parliamentary Constituency had the highest proportion of children among its population (23.7%), which can be directly linked to continued above average fertility rates in the last 15 years. North Down Parliamentary Constituency had the lowest proportion of children among its population in 2010 (18.3%) due to a combination of historically low fertility and low mortality rates.

20. In contrast in 2010, North Down Parliamentary Constituency had the highest proportion of the population of pensionable age¹ (22.0%). Foyle Parliamentary Constituency had the lowest proportion (14.0%) through a combination of high mortality rates and historic out migration.

NISRA

September 2011

¹ Pensionable age is taken to be males aged 65 and over, and females aged 60 and over, the definition of pensionable age for women is changing, see http://www.direct.gov.uk/en/Pensionsandretirementplanning/StatePension/DG_4017919 for more details.

The following tables, figures and maps are attached:

Figure 1: Percentage population change by Local Government District (2001 to 2010)

Table 1: Small areas with largest population growth between 2001 and 2010

Map 1: Percentage change in total population by small area (2001 to 2010)

Table 2: Small areas with the largest population decline (2001-2010)

Figure 2a: Overall percentage change in population size between 2009 and 2010 of Parliamentary Constituencies

Figure 2b: Overall percentage change in population size between 2001 and 2010 of Parliamentary Constituencies

Figure 1: Percentage population change by Local Government District (2001 to 2010)

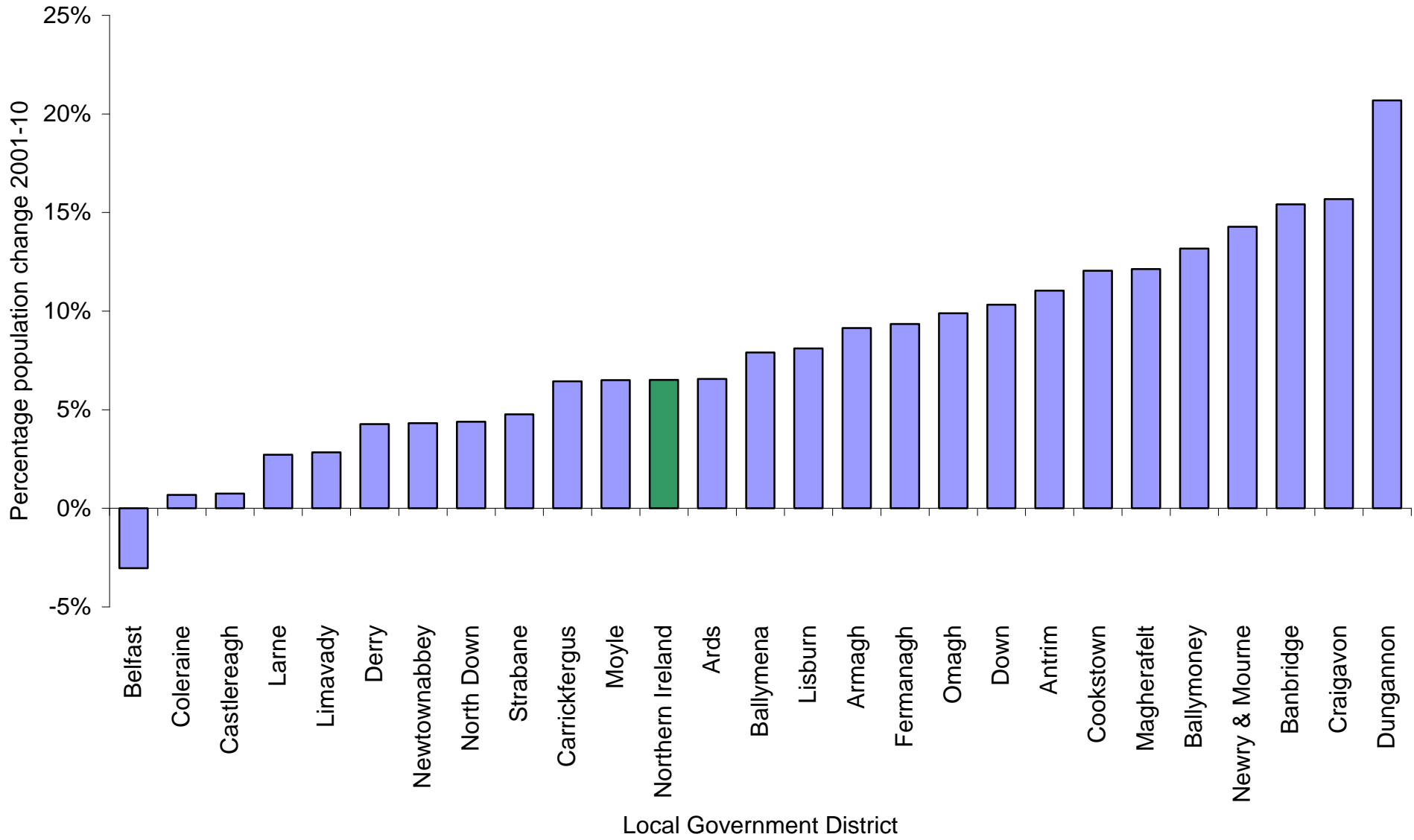


Table 1: Small areas with largest population growth between 2001 and 2010

Local Government District	Small Area Label	2001 Population Estimate	2010 Population Estimate	Percentage Change
Lisburn	Derryaghy_1	1,860	4,190	125%
Newtownabbey	Mallusk_2	1,950	4,230	117%
Larne	Kilwaughter_1	1,750	3,340	91%
North Down	Conlig_2	1,320	2,330	76%
Derry	Enagh_2	1,580	2,790	76%
Craigavon	Kernan_2	1,900	3,130	65%
Antrim	Springfarm_1	1,440	2,290	59%
Limavady	Aghanloo_1	1,730	2,660	54%
Craigavon	Drumgask_1	1,800	2,760	53%
Antrim	Massereene_1	1,810	2,760	53%
Antrim	Aldergrove_2	1,340	1,980	48%
Antrim	Massereene_2	1,590	2,360	48%
Down	Castlewellan_2	1,620	2,370	47%
Craigavon	Kernan_1	1,820	2,650	46%
Craigavon	Donaghcloney_2	1,470	2,130	45%
Derry	Culmore_5	1,800	2,610	45%
Derry	Culmore_4	1,650	2,390	45%
Ards	Portavogie_2	1,690	2,430	44%
Lisburn	Knockmore_1	1,870	2,660	42%
Derry	Holly Mount_2	2,000	2,850	42%
Dungannon	Killymeal	2,140	3,030	42%
Belfast	Legoniel_1	1,990	2,820	41%
Derry	Crevagh_3	1,780	2,510	41%
Castlereagh	Knockbracken_1	1,410	1,990	41%
Craigavon	Waringstown_1	1,660	2,330	40%
Banbridge	Ballydown_2	1,870	2,610	39%
Craigavon	Parklake	2,520	3,510	39%
Newry & Mourne	Burren and Kilbroney_2	1,770	2,460	39%
Ballymena	Ardeevin	2,360	3,280	39%
Dungannon	Coolhill	2,170	3,020	39%
Craigavon	Magheralin_2	2,070	2,870	39%

Map 1: Percentage change in total population by small area (2001 to 2010)

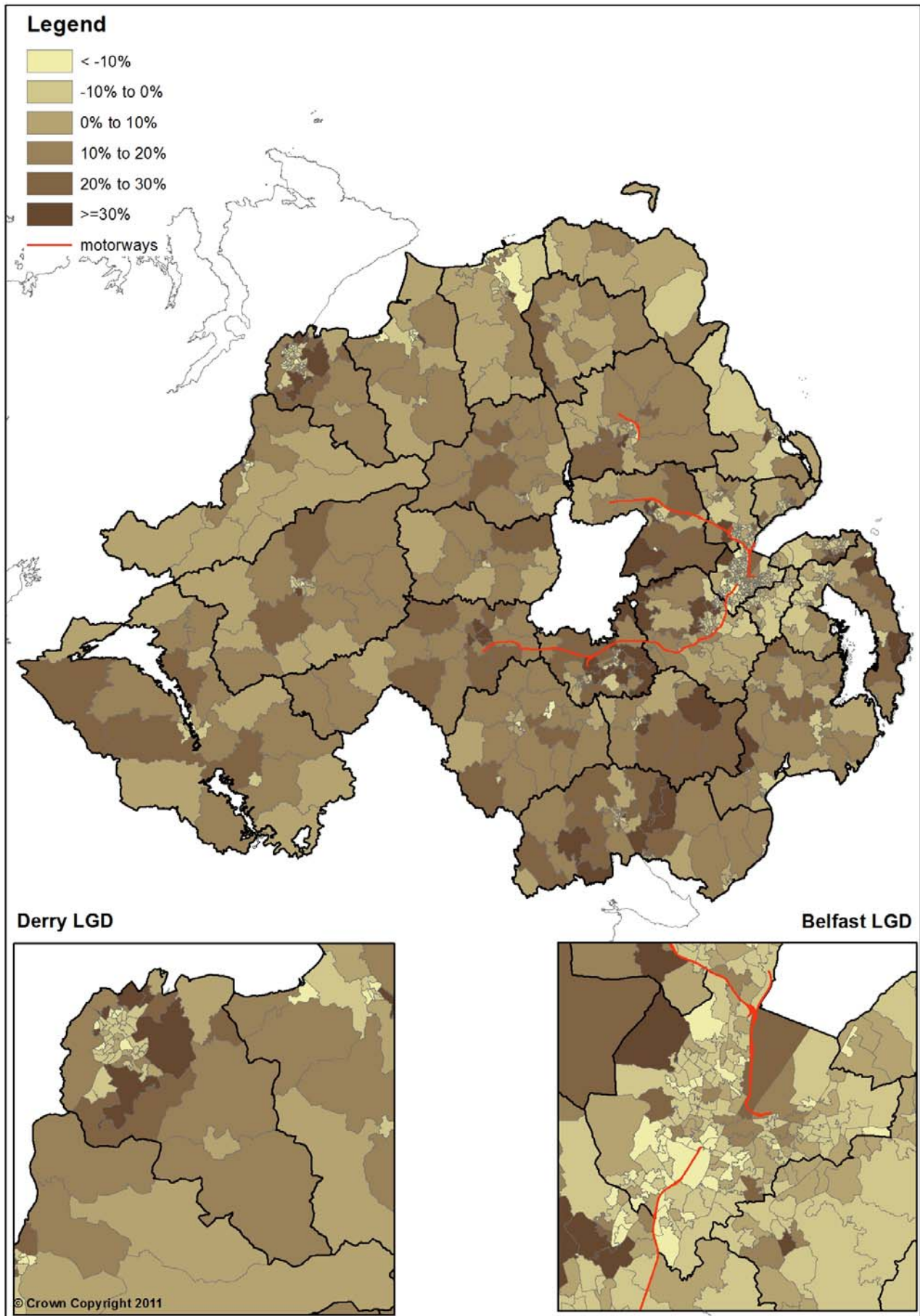


Table 2: Small areas with the largest population decline (2001 - 2010)

Local Government District	Small Area Label	2001 Population Estimate	2010 Population Estimate	Percentage Change
Derry	Ebrington_1	1,920	1,190	-38%
Antrim	Aldergrove_1	2,820	1,800	-36%
Omagh	Lisanelly_1	1,430	940	-34%
Limavady	Gresteele_2	1,970	1,490	-24%
Larne	Ballyloran	1,450	1,110	-24%
Belfast	Musgrave_2	1,960	1,580	-20%
Belfast	Botanic_2	2,030	1,630	-20%
Belfast	Botanic_1	1,900	1,540	-19%
Strabane	Ballycolman	2,430	1,960	-19%
Armagh	The Mall	2,120	1,710	-19%
Belfast	Ardoyne_1	2,320	1,870	-19%
Belfast	Glen Road_2	2,080	1,710	-18%
Belfast	Whiterock_3	1,990	1,640	-17%
Derry	Shantallow West_1	1,630	1,350	-17%
Belfast	Falls_1	1,730	1,440	-17%
Belfast	Water Works_3	2,120	1,770	-17%
Lisburn	Twinbrook_2	1,580	1,320	-16%
Belfast	Botanic_3	1,770	1,480	-16%
Limavady	Greystone	1,690	1,430	-15%
Lisburn	Twinbrook_1	1,420	1,210	-15%
Belfast	Sydenham_2	1,850	1,570	-15%
Limavady	Coolessan	1,750	1,490	-15%
Belfast	Fortwilliam_2	1,760	1,510	-15%

Figure 2a: Overall percentage change in population size between 2009 and 2010 of Parliamentary Constituencies

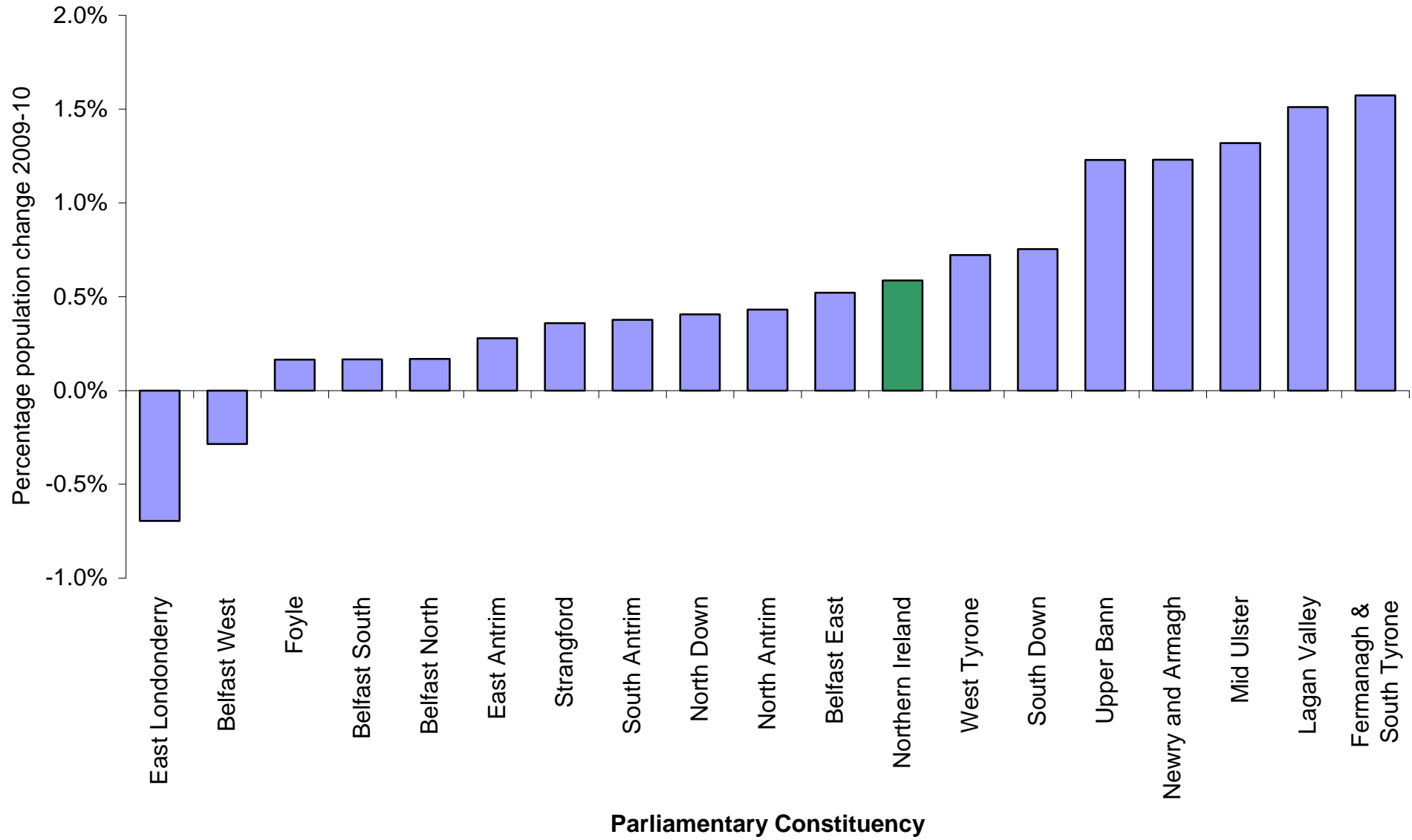
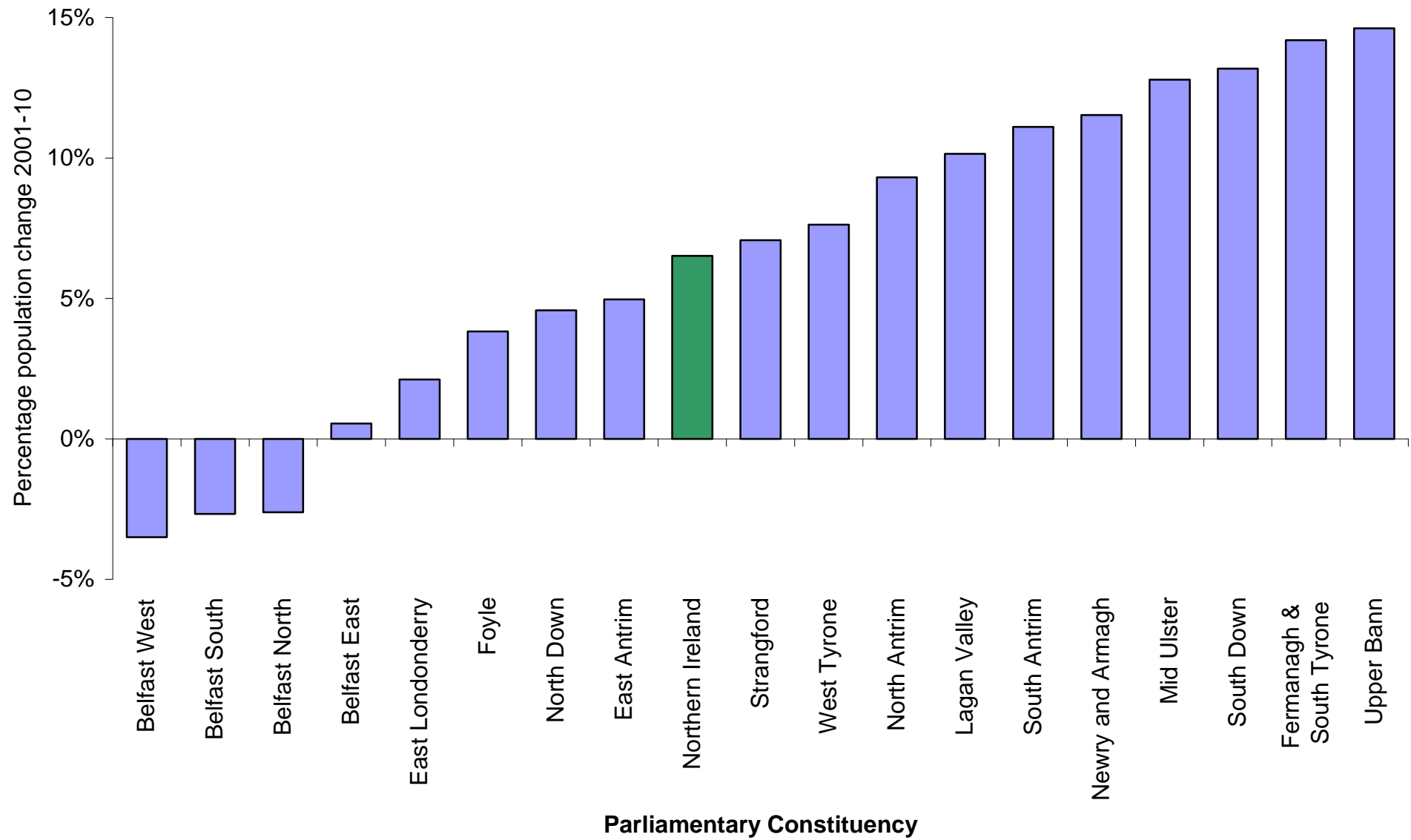


Figure 2b: Overall percentage change in population size between 2001 and 2010 of Parliamentary Constituencies



BACKGROUND NOTES

1. Small areas – Super Output Areas (SOAs) – are Electoral Wards or sub divisions of Wards. SOAs were developed by NISRA to be more homogenous and equal in size than Electoral Wards, thus improving the reporting of small area statistics. SOAs have been created taking into account measures of population size and mutual proximity. The SOAs were designed in 2005 to have a population of circa 2,000, with a lower threshold of 1,300 and an upper threshold of 2,800. There are 890 SOAs in Northern Ireland. Further information on Super Output Areas can be obtained from the NISRA website at: http://www.nisra.gov.uk/deprivation/super_output_areas.htm
2. The small area population estimates are created from an average of two statistical methods: the ratio change and cohort-component methods. The ratio change method applies the change in secondary, typically administrative, data sources over the period 2009-10 to the 2009 Small Area Population Estimates. The cohort-component method updates the 2009 Small Area Population Estimates by ‘ageing on’ populations and applying information on births, deaths and migration. An average of both methods was taken and constrained to the published population figures for Northern Ireland and Local Government Districts, which were published on 30 June 2011. A separate publication with a more detailed description of the methodology and further analysis of the 2008 small area population estimates is available at: <http://www.nisra.gov.uk/demography/default.asp125.htm>
3. The population estimates relate to the usually resident population including Her Majesty's Forces stationed here. Data sources used in the production of small area population estimates rely on the use of postcodes to allocate persons to specific small areas. In a small number of cases postcodes span more than one small area (3-5% of postcodes). Thus properties within the same postcode can be in different small areas. However all properties with a given postcode will be allocated to a single small area based on where the “centre of the postcode” is located. This can give rise to some small inaccuracies in the resultant small area estimates. While population estimates in this report have been presented to the nearest ten persons, precision to this level should not be assumed. Due to rounding, estimates may not add up to previously published figures for Northern Ireland and Local Government Districts.

4. The urban-rural definition was published in 2005. The urban-rural classification is based on the population of each settlement at the time of the 2001 Census. Small areas can be classified as urban if the majority of domestic properties are within a settlement and the settlement has a population of 4,500 or more. More detail can be found at:
<http://www.nisra.gov.uk/demography/default.asp26.htm>.

5. NISRA has published guidance in light of the boundary changes of the Parliamentary Constituencies and Assembly Areas, which came into effect at the 2010 Westminster and 2011 Assembly elections respectively:
<http://www.ninis.nisra.gov.uk/mapxtreme/linkeddcs/aawpc%20guidance.pdf>

6. Detailed tables and additional reports on population estimates can be accessed on the Northern Ireland Statistics and Research Agency's website at:
<http://www.nisra.gov.uk/demography/default.asp17.htm>

7. Further statistical information can be obtained from NISRA Customer Services:

Telephone: 028 9034 8160

Fax: 028 9034 8161

E-mail: census.nisra@dfpni.gov.uk

Responsible Statistician: Dr David Marshall