

STATISTICS PRESS NOTICE:

SMALL AREAS POPULATION ESTIMATES (2008)



Small Area Population Estimates Released

9:30am – Wednesday, 31 March 2010

Between mid-2001 and mid-2008 the number of people living in Northern Ireland is estimated to have increased by 86,000 people (5.1%). The size of the population has increased from 1.689 million in 2001 to 1.775 million in 2008. The new small area figures relate to 890 small areas across Northern Ireland (see note 2).

In general the population has shown little change in the centre of urban areas. In contrast population growth is seen in the suburban areas on the outskirts of towns and cities (e.g. in Derryagh and Mallusk). Dungannon Local Government District has seen the largest increase over the last seven years at 16% growth. Small areas within Dungannon have increased by larger amounts over the last seven years. A map for all areas is attached.

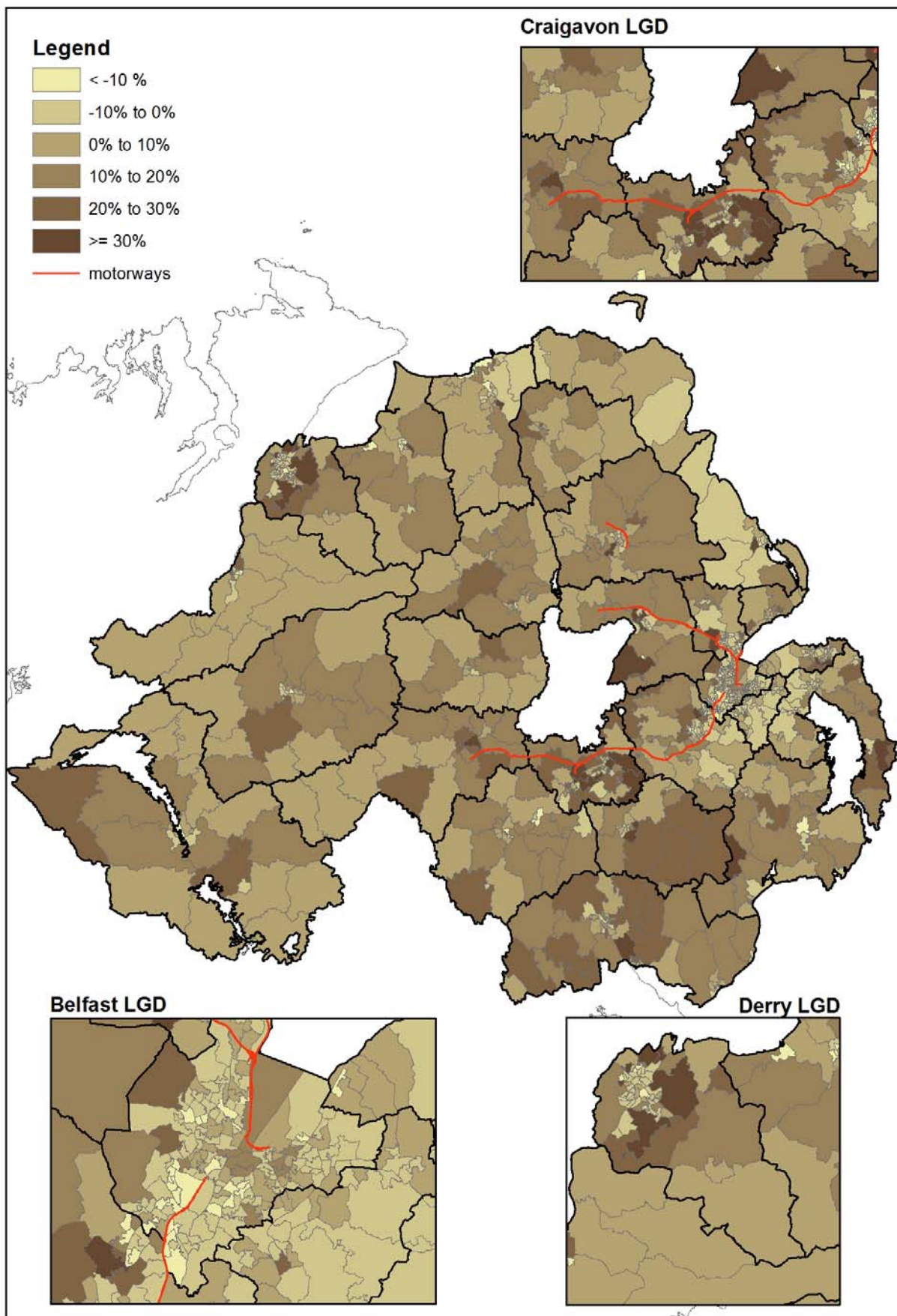
Table 1 lists the areas which have shown the largest increases in population between 2001 and 2008. The new population figures were created as part of the work to produce the new measure of Multiple Deprivation in Northern Ireland. Full results and a short report can be found on the NISRA website.

Table 1: Small areas with largest population growth between 2001 and 2008

Local Government District	Small Area Label	2001 Population Estimate	2008 Population Estimate	Percentage Change
Lisburn	Derryaghy 1	1,860	3,670	97%
Newtownabbey	Mallusk 2	1,950	3,660	88%
Larne	Kilwaughter 1	1,750	3,000	72%
North Down	Conlig 2	1,320	2,170	64%
Derry	Enagh 2	1,580	2,590	63%
Limavady	Aghanloo 1	1,730	2,630	52%
Craigavon	Kernan 2	1,900	2,790	47%
Antrim	Massereene 1	1,810	2,650	47%
Craigavon	Drumgask 1	1,800	2,600	44%
Derry	Culmore 5	1,800	2,560	43%
Ards	Portavogie 2	1,690	2,390	41%
Derry	Culmore 4	1,650	2,320	40%
Antrim	Springfarm 1	1,440	2,010	40%
Antrim	Aldergrove 2	1,340	1,870	39%
Down	Castlewellan 2	1,620	2,250	39%
Derry	Crevagh 3	1,780	2,460	38%
Derry	Shantallow West 4	1,630	2,230	37%
Antrim	Massereene 2	1,590	2,170	36%
Dungannon	Killymeal	2,140	2,910	36%
Craigavon	Donaghcloney 2	1,470	2,000	36%
Craigavon	Magheralin 2	2,070	2,790	35%
Derry	Holly Mount 2	2,000	2,690	35%
Coleraine	Knocklynn 1	1,630	2,190	34%
Ballymena	Ardeevin	2,360	3,150	34%
Banbridge	Ballydown 2	1,870	2,500	33%
Craigavon	Kernan 1	1,820	2,410	32%
Newry and Mourne	Burren and Kilbroney 2	1,770	2,320	31%
Craigavon	Parklake	2,520	3,300	31%
Dungannon	Coolhill	2,170	2,820	30%
Lisburn	Glenavy 1	2,000	2,580	29%

The largest increases between 2001 and 2008 have been seen in areas on the outskirts of the Belfast Urban Area – namely in Derryaghy 1 (97%) and Mallusk 2 (+88%). Areas close to the M1 and M2 in Craigavon and Antrim, as well as along the A1 near Banbridge and Newry have also increased in population size. Similarly, areas on the outskirts of the Derry Urban Area have also increased significantly. Map 1 shows the change across all small areas.

Map 1: Percentage change in population, 2001 to 2008, by small area



NOTES FOR EDITORS

1. The estimates relate to the usually resident population of Northern Ireland including Her Majesty's Forces stationed here.
2. The small areas, known as Super Output Areas, were created for the 2005 Multiple Deprivation Measure. They were designed to be homogenous and relatively equal in population size. The areas relate to electoral wards or subdivisions of wards. There are 890 Super Output Areas across Northern Ireland.
3. More detailed statistics can be accessed on the NISRA website at:
<http://www.nisra.gov.uk/demography/default.asp125.htm>
4. A full paper with a description of the methodology and further analysis of small area population estimates will be published later in the Summer.
5. All media inquiries should be directed to the DFP Press Office
Telephone: 028 9052 7374
Fax: 028 9052 7149
6. Further information on the statistics provided in this publication can be obtained from NISRA Customer Services at:
Telephone: 028 9034 8160
Fax: 028 9034 8161
E-mail: census.nisra@dfpni.gov.uk
Responsible Statistician: Dr David Marshall