

# SMALL AREAS POPULATION ESTIMATES (2008) – STATISTICAL REPORT



## Executive Summary

1. NISRA has produced small area population estimates for the period 2001 to 2008, for 890 small areas or Super Output Areas across Northern Ireland (see background note 1).
2. Between mid-2001 and mid-2008 the number of people living in Northern Ireland is estimated to have increased by 86,000 or just over 5%. The size of the population has increased from 1.689 million in 2001 to 1.775 million in 2008.
3. In general at the small area level the population has shown greatest increase in the suburban areas on the outskirts of towns and cities. Largest growth is seen in suburban areas just outside Belfast in parts of the Derryaghly and Mallusk wards, which have nearly doubled in population between 2001 and 2008. In contrast little change was seen in the centre of urban areas.
4. In addition areas around the M1/M2 in Craigavon and Antrim and the A1 near Banbridge and Newry have also increased in population size. Similarly, areas on the outskirts of Derry Urban Area have also increased significantly in population size. Dungannon Local Government District has seen the largest increase over the seven years at 16%. Some areas in Dungannon have increased by around 30% over this period.
5. The list of areas that have shown the largest decrease in population is dominated by areas that contain or contained Armed Forces establishments. More detailed analysis and figures are attached – including a map outlining population change for all areas.

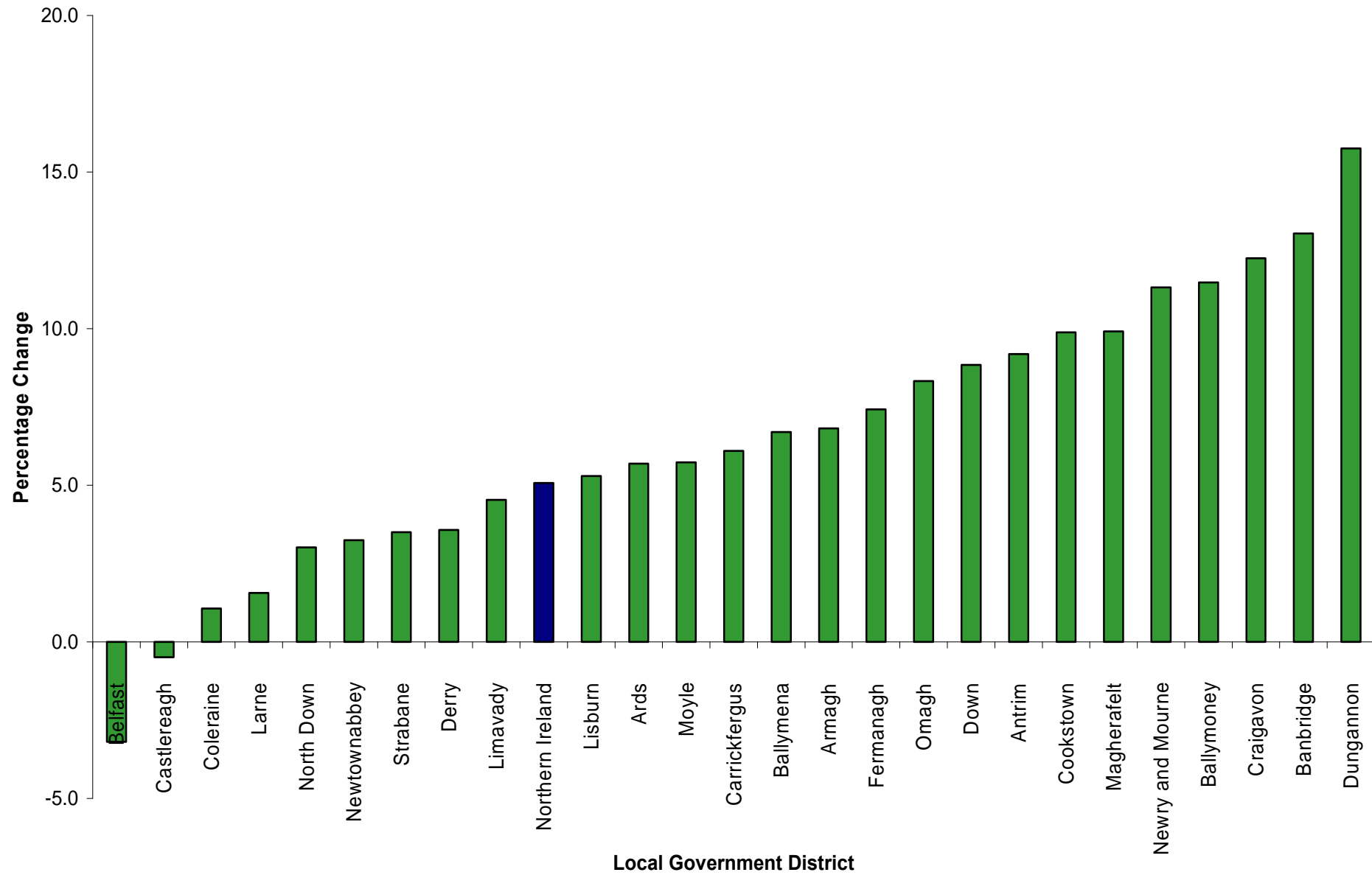
## *Introduction*

1. Between mid-2001 and mid-2008 the number of people living in Northern Ireland is estimated to have increased by 85,700 people (5.1%). The size of the resident population in Northern Ireland has increased from 1.689 million people at 30 June 2001 to 1.775 million people at 30 June 2008.
2. The mid-year population estimates are published every year by single year of age and sex at Local Government District level and Parliamentary Constituency level by NISRA in July of the following year. For smaller areas such as Super Output Areas (SOAs) – see background notes 2 and 3 – the estimation process becomes more complex, particularly in relation to migration. This report outlines some of the main findings in the 2008 small area population estimates.

### *Local Government Districts (change in population size)*

3. Between 2001 and 2008, Dungannon and Banbridge Local Government Districts had the largest increases in population (+15.8% and +13.0% respectively). Other districts that experienced population increases of over 10% include Newry and Mourne (+11.3%), Ballymoney (11.5%) and Craigavon (+12.2%) Local Government Districts. These rates of increase are more than twice the Northern Ireland percentage increase (+5.1%) over the same period.
4. In contrast, between 2001 and 2008 Belfast (-3.2%) and Castlereagh (-0.5%) Local Government Districts experienced a loss in population. Figure 1 shows the overall percentage population change for all Local Government Districts within Northern Ireland between 2001 and 2008. Further details on the mid-year population estimates at Local Government District level can be found on the NISRA website.

**Figure 1: Percentage population change by Local Government District (2001 to 2008)**



### *Previous Small Area Population Estimates*

5. Population statistics for small areas are not routinely produced by NISRA. The most recent NISRA small area population figures relate to the 2001 Census. Small area population figures were produced by Professor Michael Noble from the University of Oxford as part of the analysis to produce the 2005 Multiple Deprivation Measure. Due to the production of the 2010 Multiple Deprivation Measure, new population statistics for small areas have been produced by NISRA.

### *Super Output Areas (change in population size)*

6. Whilst there is a variation in population change within Local Government Districts (-3.2% to +15.8%), there is even greater variation in population change in small areas (-37% to +96%). In general the population has shown less change within the centre of urban areas and the majority of large population growth seen in the suburban areas on the outskirts of towns and cities.
7. In Dungannon Local Government District, the overall population increase was 15.8%. However, the increase varied greatly within the Local Government District, with Killymeal SOA showing an increase of over 35% and Coalisland South SOA showing an increase of less than 1%. Table 1 lists the small areas which have shown the highest increases in population between 2001 and 2008.

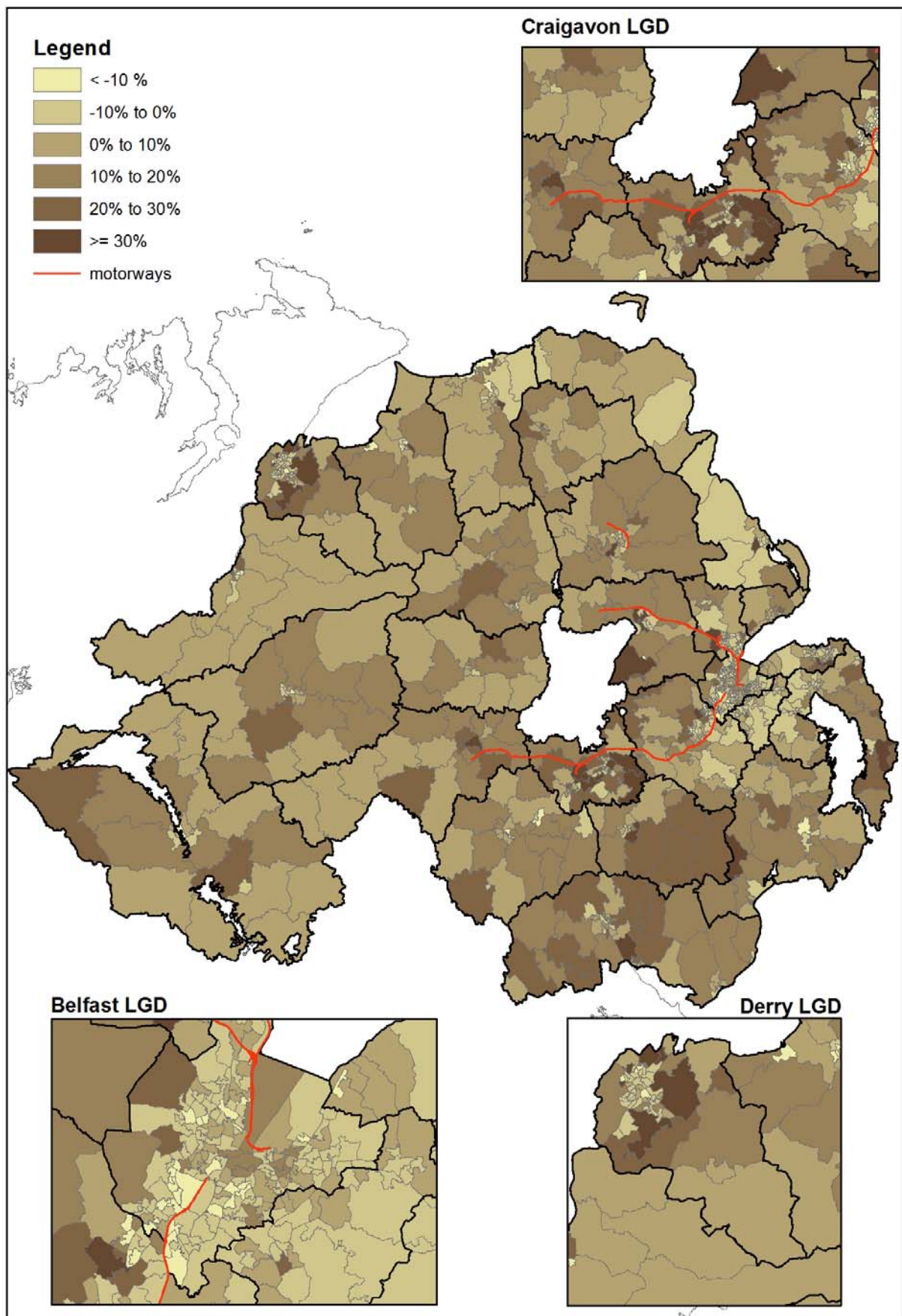
**Table 1: Small areas with largest population growth between 2001 and 2008**

Local Government District	Small Area Label	2001 Population Estimate	2008 Population Estimate	Percentage Change
Lisburn	Derryaghy 1	1,860	3,670	97%
Newtownabbey	Mallusk 2	1,950	3,660	88%
Larne	Kilwaughter 1	1,750	3,000	72%
North Down	Conlig 2	1,320	2,170	64%
Derry	Enagh 2	1,580	2,590	63%
Limavady	Aghanloo 1	1,730	2,630	52%
Craigavon	Kernan 2	1,900	2,790	47%
Antrim	Massereene 1	1,810	2,650	47%
Craigavon	Drumgask 1	1,800	2,600	44%
Derry	Culmore 5	1,800	2,560	43%
Ards	Portavogie 2	1,690	2,390	41%
Derry	Culmore 4	1,650	2,320	40%
Antrim	Springfarm 1	1,440	2,010	40%
Antrim	Aldergrove 2	1,340	1,870	39%
Down	Castlewellan 2	1,620	2,250	39%
Derry	Crevagh 3	1,780	2,460	38%
Derry	Shantallow West 4	1,630	2,230	37%
Antrim	Massereene 2	1,590	2,170	36%
Dungannon	Killymeal	2,140	2,910	36%
Craigavon	Donaghcloney 2	1,470	2,000	36%
Craigavon	Magheralin 2	2,070	2,790	35%
Derry	Holly Mount 2	2,000	2,690	35%
Coleraine	Knocklynn 1	1,630	2,190	34%
Ballymena	Ardeevin	2,360	3,150	34%
Banbridge	Ballydown 2	1,870	2,500	33%
Craigavon	Kernan 1	1,820	2,410	32%
Newry and Mourne	Burren and Kilbroney 2	1,770	2,320	31%
Craigavon	Parklake	2,520	3,300	31%
Dungannon	Coolhill	2,170	2,820	30%

8. The largest increases between 2001 and 2008 have been seen in Derryaghy\_1 (+97%), Mallusk\_2 (+88%) and Kilwaughter\_1 (+72%) SOAs. These areas have seen a large amount of domestic housing development between 2001 and 2008.

9. Areas on the “M1/M2 corridors” in Antrim and Craigavon, as well as along the A1 around Banbridge and Newry have increased in population size. Similarly, areas on the outskirts of Derry Urban Area have also increased significantly in population size. Map 1 shows the percentage population change by small area between 2001 and 2008.

**Map 1: Percentage change in total population by small area (2001 to 2008)**



10. Several of the small areas that have shown the biggest decreases previously contained defence establishments. This is most noticeable in Ebrington\_1 (-37%), which contained the Ebrington Barracks in Derry Local Government District. Also, Lisanelly\_1 (-30%) in Omagh Local Government District and Aldergrove\_1 (-26%) in Antrim Local Government District have both shown large decreases in population; again this is mainly due to the decreased Armed Forces presence in these areas. Table 2 lists the small areas which have shown the highest relative decreases in population between 2001 and 2008.

**Table 2: Small areas with the largest population decline (2001 - 2008)**

Local Government District	Small Area Label	2001 Population Estimate	2008 Population Estimate	Percentage Change
Derry	Ebrington_1	1,920	1,210	-37%
Omagh	Lisanelly_1	1,430	1,000	-30%
Antrim	Aldergrove_1	2,820	2,080	-26%
Limavady	Gresteele_2	1,970	1,530	-23%
Larne	Ballyloran	1,450	1,140	-22%
Lisburn	Wallace Park_1	2,180	1,760	-19%
Armagh	The Mall	2,120	1,710	-19%
North Down	Loughview_2	2,340	1,900	-19%
Belfast	Botanic_2	2,030	1,660	-18%
Strabane	Ballycolman	2,430	2,000	-17%
Derry	Shantallow West_1	1,630	1,340	-17%
Belfast	Musgrave_2	1,960	1,630	-17%
Belfast	Botanic_1	1,900	1,600	-16%
Belfast	Botanic_3	1,770	1,490	-16%
Belfast	Whiterock_3	1,990	1,690	-15%
Belfast	Glen Road_2	2,080	1,760	-15%

11. Other small areas to decrease in population that contain or contained a defence establish include Gresteele\_2 (-23%), Loughview\_2 (-19%), The Mall (-19%) and Wallace Park\_1 (-19%).

12. In 2001, the average population in a SOA was 1,898; this has increased by 5.1% to 1,994 in 2008. There is also a wider range of population estimates in SOAs in 2008, with populations ranging from 1,000 to 3,670 in 2008 compared to a range of 1,290 to 2,970 in 2001.

13. The SOAs were designed to have a population of circa 2,000, within a 1,300-2,800 range. The number of SOAs with a population outside this range has increased from 9 to 66 between 2001 and 2008.

*Urban and Rural small areas (change in population size)*

14. Each Super Output Area can be classified as being either urban or rural (See background note 4). The population in urban SOAs increased by 2.4%, whilst the population in rural areas increased by 10.1%. However, the ten fastest growing SOAs between 2001 and 2008 were all urban areas. Some areas that were classified as rural and experienced a large increase in population may now be classified as urban since they were on the outskirts of towns or villages that have grown in population size.

**NISRA**

**March 2010**

**Responsible Statistician: Dr David Marshall**

## BACKGROUND NOTES

1. Small areas – Super Output Areas (SOAs) – were created to be more homogenous and equal in size than Electoral Wards. Super Output Areas (SOAs) were developed by NISRA to improve the reporting of small area statistics. SOAs have been created on a ward-by-ward basis taking into account measures of population size and mutual proximity. The SOAs were designed in 2005 to have a population of circa 2,000, with a lower threshold of 1,300 and an upper threshold of 2,800. There are 890 SOAs in Northern Ireland. Further information on Super Output Areas can be obtained from the NISRA website at [http://www.nisra.gov.uk/deprivation/super\\_output\\_areas.htm](http://www.nisra.gov.uk/deprivation/super_output_areas.htm)
2. The small area population estimates are created from an average of two statistical methods. The ratio change and cohort-component methods. The ratio change method applies the change in secondary typically administrative data sources over the period 2001-08 to the 2001 Census estimates. The cohort-component method updates the Census estimates by ‘ageing on’ populations and applying information on births, deaths and migration. An average of both methods was taken and constrained to the published population figures for Northern Ireland and Local Government Districts. A separate publication with a more detailed description of the methodology and further analysis of small area population estimates will be published in Summer 2010.
3. The population estimates relate to the usually resident population including Her Majesty's Forces stationed here. Data sources used in the production of small area population estimates rely on the use of postcodes to allocate persons to specific small areas. In a small number of cases postcodes span more than one small area (3-5% of postcodes). Thus properties within the same postcode can be in different small areas. However all properties with a given postcode will be allocated to a single small area based on where the “centre of the postcode” is located. This can give rise to some small inaccuracies in the resultant small area estimates. While population estimates in this report have been presented to the nearest ten persons, precision to this level should not be assumed. Due to rounding, estimates may not add up to previously published figures for Northern Ireland and Local Government Districts.
4. The urban-rural definition was published in 2005. The urban-rural classification is based on the population of each settlement at the time of the 2001 Census. Small areas can be classified as urban if the majority of domestic properties are within a settlement and the settlement has a population of 4,500 or more. More detail can be found at <http://www.nisra.gov.uk/demography/default.asp26.htm>.