

STATISTICS PRESS NOTICE 2008-BASED POPULATION PROJECTIONS



Northern Ireland
**Statistics &
Research**
Agency

Population set to pass 1.8 million next year

9:30am – Wednesday 21 October 2009

The Northern Ireland population is projected to increase by 64,000 people, or 4%, over the next five years (2008-2013). The population is projected to pass 1.8 million in 2010 and rise to 1.839 million by 2013, according to figures released today by the Northern Ireland Statistics and Research Agency.

The figures show that:

- the population is projected to increase to 1.839 million in 2013 from 1.775 million in 2008. This is equivalent to an average annual rate of growth of 0.7%. Over the longer term the population is projected to reach 1.946 million by 2023 an increase of 171,000 people or 10%;
- the projected increase in population is primarily due to natural growth. In total between 2008 and 2013 it is projected that there will be 55,000 more births than deaths; and
- projections indicate a marked increase in the size of the population at older ages. The number of people of **current** pensionable age is projected to increase by around 11% in the next five years (2008-2013) and by 40% in the next fifteen years (2008-2023).

Assumptions

Population projections are by definition based on assumptions about future fertility (the number of children each woman will have), mortality (the chance of dieing) and migration levels (movement of people into and out of Northern Ireland). In these population projections it is assumed that:

- the hypothetical “average woman” in Northern Ireland will have 1.95 children in her lifetime;
- people will continue to live longer, with death rates continuing to reduce. In the long term rates of improvement in mortality rates are projected to be 1% per annum; and
- over the next six years around 10,000 more people will come here to live than leave. Beyond this migration will be broadly in balance with 500 more people coming here to live than leaving each year.

Age-Distribution

- the number of children¹ in Northern Ireland is projected to increase marginally over the next fifteen years from 381,000 children in 2008 to a projected 398,000 children in 2023 (4% increase);
- the number of people of current working age² is also projected to increase marginally from 1,098,000 people in 2008 to a projected 1,132,000 people in 2023 (3% increase);
- in contrast the number of people of **current** pensionable age³ is projected to increase markedly from 296,000 in 2008 to 416,000 in 2023, an increase of 41%. Between 2010 and 2020, the age at which women are eligible for the state pension will increase from 60 years to 65 years. Taking this into account, the number of people of working age is projected to rise by 9% and the number of **actual** pensioners will grow by 20%; and

¹ Children are those age under 16 years;

² Working age as currently defined (males aged 16-64 and females aged 16-59); and

³ Pensioners as currently defined (males aged 65 and over and females aged 60 and over).

- these figures show that the age profile of the population will gradually become older. The average age will rise from 37.6 years in 2008 to 40.4 years by 2023. The number of people aged 65 and over will continue to rise after 2023, and there are projected to be twice as many people aged 65 and over in 2041 than there are today.

The tables and figures below summarise information regarding the population projections. The graphs are taken forward until 2033 to give a longer term indication of the projection beyond the next fifteen years.

The following tables and figures are attached:

Table 1: Projected components of population change, 2008-2033.

Table 2: Projected make up of population, 2008-2033.

Figure 1: Population of Northern Ireland, actual and projected, 1971-2033.

Figure 2: Children aged under 16 and adults aged 65 and over, actual and projected, 1971-2033.

Figure 3: Population aged 16 to 64, actual and projected, 1971-2033.

Figure 4: Births and deaths, actual and projected, 1971-2033.

Figure 5: Net migration, actual and projected, 1971-2033.

Table 3: Projected population components, 2008-2033 (thousands)

NISRA
October 2009

Table 1: Projected components of population change, 2008-2033 (annual averages)
(Thousands)

	2008-2013	2013-2018	2018-2023	2023-2028	2028-2033
Population at start	1775.0	1839.2	1895.6	1945.8	1985.8
Births (average)	25.1	24.8	24.1	23.0	22.3
Deaths (average)	14.2	14.1	14.6	15.5	16.8
Natural change	11.0	10.8	9.5	7.5	5.5
Net migration (average)	1.8	0.5	0.5	0.5	0.5
Population at end	1839.2	1895.6	1945.8	1985.8	2015.6

Table 2: Projected make up of population, 2008-2033 (percentages)

	2008	2013	2018	2023	2028	2033
Children (Under 16)	21	21	21	20	19	19
Adult Population (16-64)	65	64	63	61	60	59
Elderly (65+)	14	15	17	18	20	22
Total	100	100	100	100	100	100

Figure 1: Population of Northern Ireland, actual and projected, 1971-2033 (non-zero y-axis)

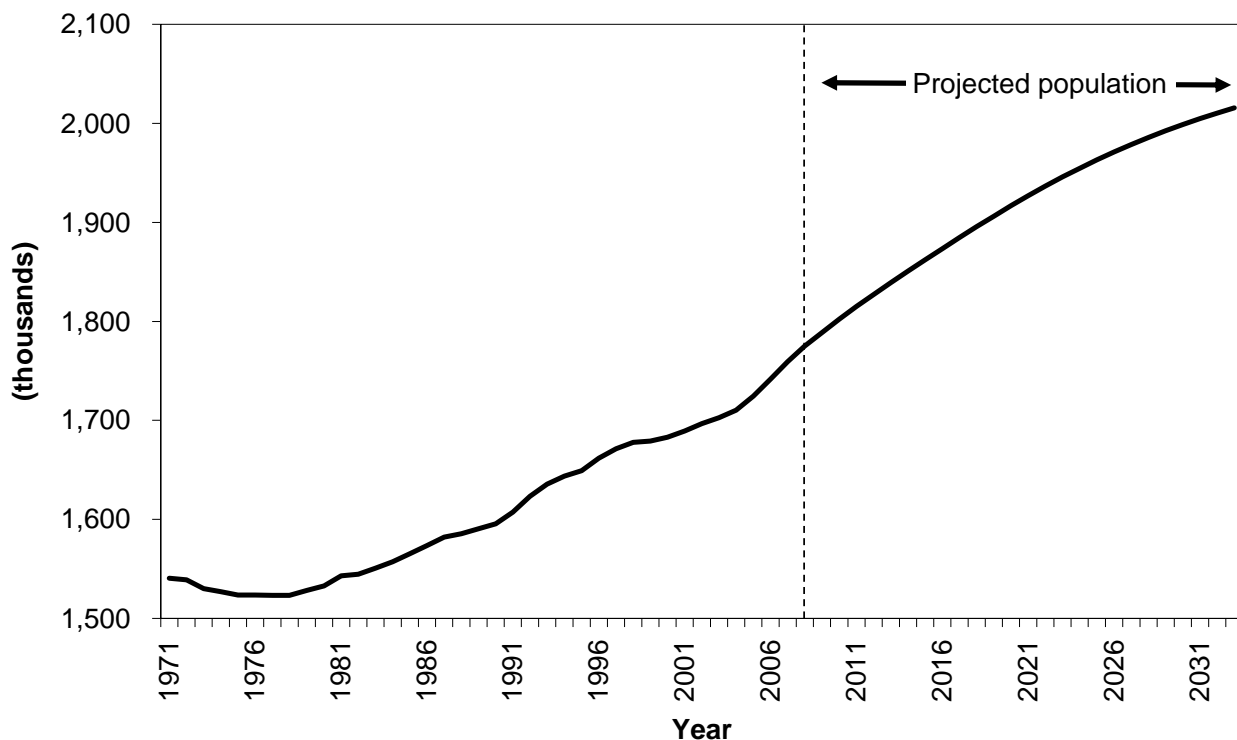


Figure 2: Children aged under 16 and adults aged 65 and over, actual and projected, 1971-2033 (non-zero y-axis)

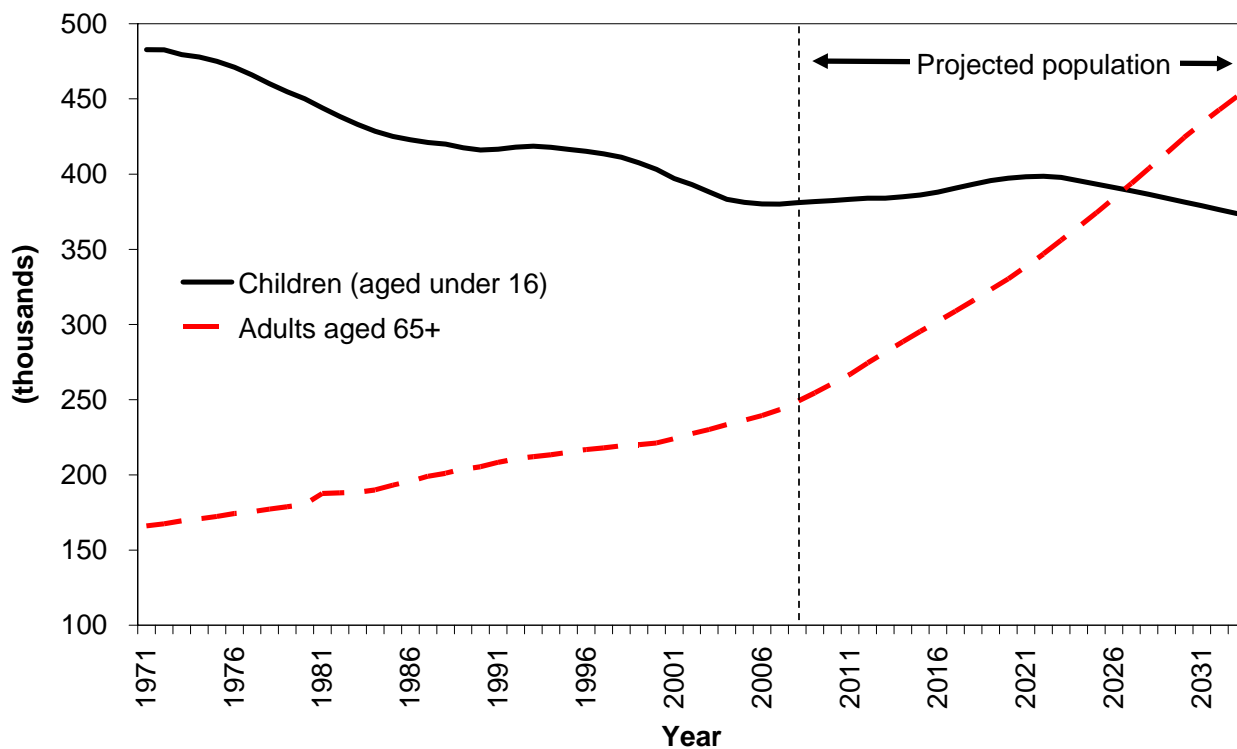


Figure 3: Population aged 16 to 64, actual and projected, 1971-2033 (non-zero y-axis)

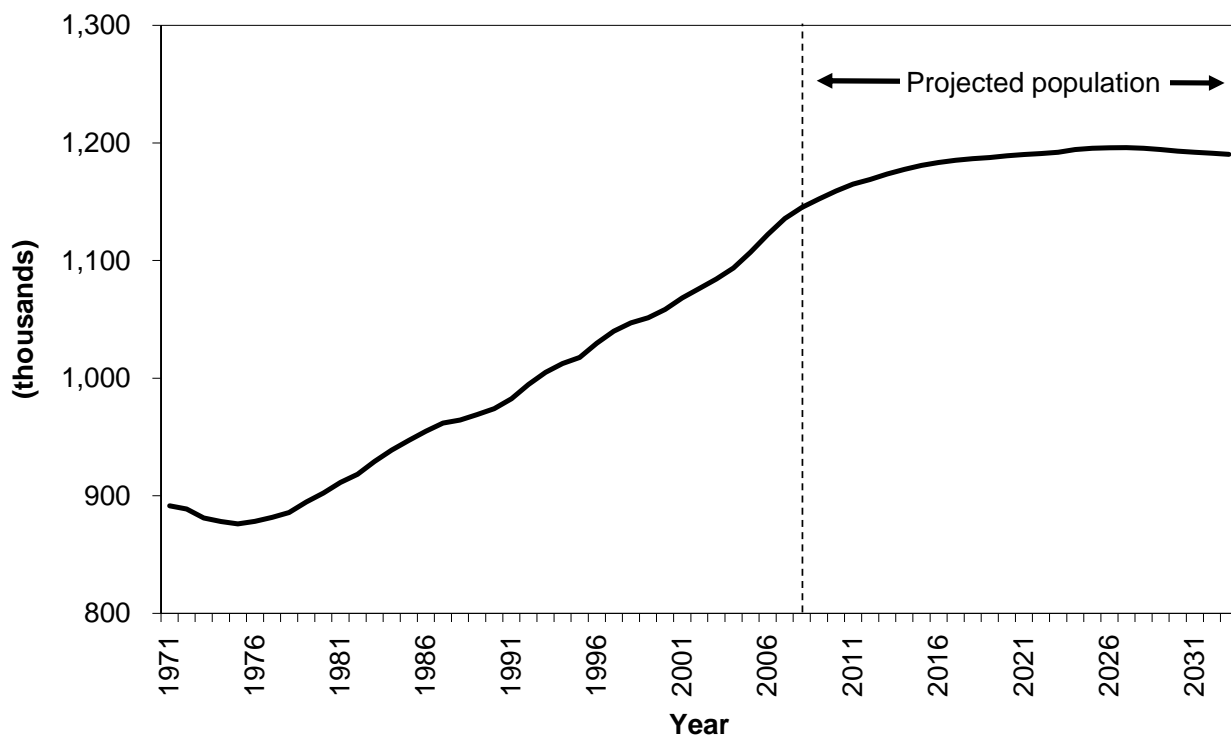


Figure 4: Births and deaths, actual and projected, 1971-2033

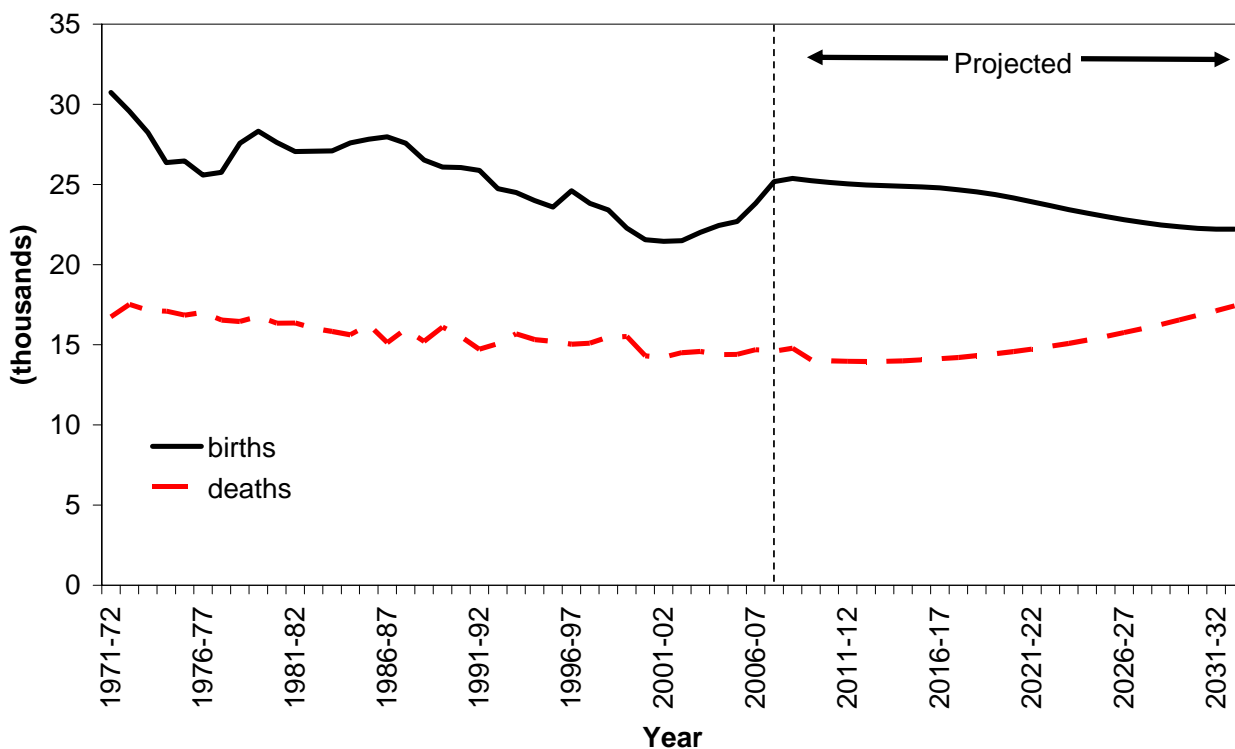


Figure 5: Net Migration, actual and projected, 1971-2033

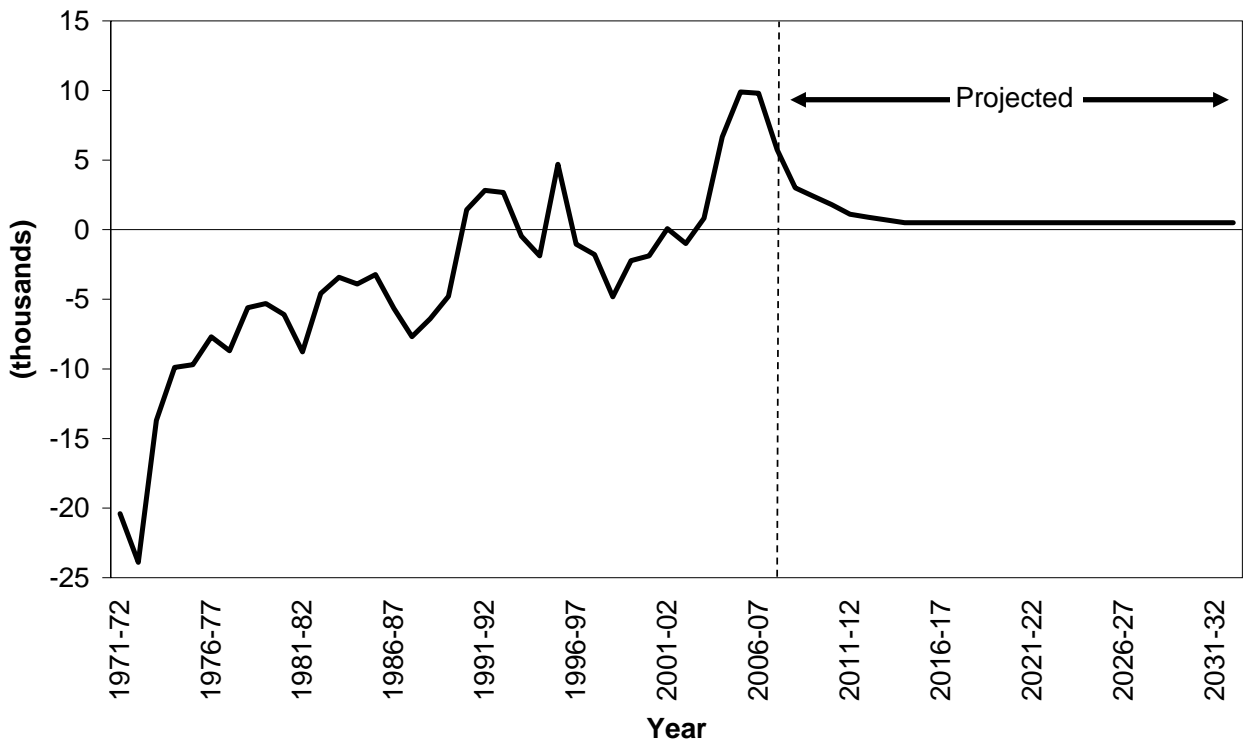


Table 3: Projected population components, 2008-2033 (thousands)

Year	Children (Aged under 16)	Adult Population (Aged 16-64)	Elderly (Aged 65 and over)	Total
2008	381	1,145	249	1,775
2009	382	1,152	255	1,789
2010	382	1,159	261	1,802
2011	383	1,165	267	1,815
2012	384	1,169	274	1,827
2013	384	1,174	282	1,839
2014	385	1,177	288	1,851
2015	386	1,181	295	1,862
2016	388	1,183	302	1,874
2017	391	1,185	309	1,885
2018	393	1,187	316	1,896
2019	396	1,188	323	1,906
2020	397	1,189	330	1,917
2021	398	1,190	339	1,927
2022	399	1,191	347	1,937
2023	398	1,192	356	1,946
2024	396	1,194	365	1,955
2025	393	1,196	374	1,963
2026	391	1,196	384	1,971
2027	389	1,196	394	1,979
2028	386	1,195	404	1,986
2029	384	1,194	414	1,992
2030	382	1,193	424	1,999
2031	379	1,192	434	2,005
2032	376	1,191	443	2,010
2033	374	1,190	452	2,016

NOTES TO EDITORS

1. The Office for National Statistics (ONS) produces national population projections for the United Kingdom and constituent countries at the request of the Registrars General for England and Wales, Scotland and Northern Ireland. Projections are made every second year, based on a review of the trends affecting fertility, mortality and migration.
2. Full results of the 2008-based national population projections for the United Kingdom are available at: <http://www.statistics.gov.uk/StatBase/Product.asp?vlnk=8519> – the ONS website. Information for England, Wales, Scotland and Northern Ireland is also published on the ONS website. The Northern Ireland projections are also available on the NISRA website at: <http://www.nisra.gov.uk/demography>. NISRA will publish 2008-based population projections for administrative areas within Northern Ireland in early 2010.
3. Projections are the result of applying long-term assumptions described in the report. If different assumptions are used different results would result – a series of alternative population projections are also produced and these are available on the ONS website.
4. Currently women aged 60 or more are eligible for the state pension and are thus of “pensionable age”. From 2020 onwards females will only be eligible for the state when they are aged 65 or more. The change in pension rules will be introduced incrementally over the period 2010 to 2020. Accordingly the number of women aged 60 to 64 who are of pensionable age will reduce over this period.
5. All media inquiries should directed to DFP Press Office
Telephone: 028 9052 7374
Fax: 028 9052 7149
6. Further statistical information can be obtained from NISRA Customer Services:
Telephone: 028 9034 8160
Fax: 028 9034 8161
E-mail: census.nisra@dfpni.gov.uk

Responsible Statistician: Dr David Marshall